



Comprehensive
Annual Financial Report
For Fiscal Year Ended
September 30, 2006

City of Boise

Idaho

The Main Street Mile is a charitable event that benefits the victims of prostate cancer. The Boise Fire Department's Recruit Academy took first place in this team event wearing full protective gear and breathing apparatus. This is the largest recruit class in the history of the Boise Fire Department.

BOISE CITY, IDAHO

Comprehensive Annual Financial Report

For the Fiscal Year Ended

September 30, 2006

Prepared by:
Department of Finance and Administration

Back side of divider

City of Boise
Comprehensive Annual Financial Report
for the Fiscal Year Ended
September 30, 2006

TABLE OF CONTENTS

INTRODUCTORY SECTION

Letter of Transmittal	A-1
GFOA Certificate of Achievement	A-8
Organization Charts	A-9
Names of Principal City Officials.....	A-11

FINANCIAL SECTION

Independent Auditors' Report	B-1
Management's Discussion and Analysis	C-1
Basic Financial Statements:	
Government-wide Financial Statements:	
Statement of Net Assets	D-2
Statement of Activities.....	D-6
Fund Financial Statements:	
Balance Sheet-Governmental Funds.....	D-10
Reconciliation of the Balance Sheet of Governmental Funds to the Statement of Net Assets	D-14
Statement of Revenues, Expenditures, and Changes in Fund Balances- Governmental Funds	D-16
Reconciliation of the Statement of Revenues, Expenditures, and Changes in Fund Balances of Governmental Funds to the Statement of Activities.....	D-19
Statement of Revenues, Expenditures, and Changes in Fund Balances- Budget and Actual:	
General Fund.....	D-22
Statement of Net Assets-Proprietary Funds.....	D-24
Reconciliation of the Proprietary Funds Statement of Net Assets to the Statement of Net Assets	D-31
Statement of Revenues, Expenses, and Changes in Fund Net Assets- Proprietary Funds.....	D-32
Reconciliation of the Statement of Revenues, Expenses and Changes in Fund Net Assets of Proprietary Funds to the Statement of Activities	D-35
Statement of Cash Flows-Proprietary Funds	D-36
Statement of Fiduciary Net Assets-Fiduciary Funds	D-44
Statement of Changes in Fiduciary Net Assets-Fiduciary Funds	D-46
Notes to Financial Statements.....	E-1

TABLE OF CONTENTS (continued)

FINANCIAL SECTION (continued)

Combining and Individual Fund Statements and Schedules:

Combining Balance Sheet-Nonmajor Governmental Funds.....	F-2
Combining Statement of Revenues, Expenditures, and Changes in Fund Balances-Nonmajor Governmental Funds.....	F-4
Schedules of Revenues, Expenditures, and Changes in Fund Balances- Budget and Actual:	
Capital Projects Fund.....	G-2
Debt Service Fund	G-4
Community Development Special Revenue Fund.....	G-6
Permanent Fund - Dedicated Trust	G-8
Combining Statement of Net Assets-Nonmajor Proprietary Funds.....	H-2
Combining Statement of Revenues, Expenses, and Changes in Fund Net Assets-Nonmajor Proprietary Funds.....	H-6
Combining Statement of Cash Flows-Nonmajor Proprietary Funds	H-10
Schedule of Revenues, Expenses-Airport Fund	I-1
Schedule of Passenger Facility Charges Collected, Held and Used-Airport Fund	I-2
Combining Statement of Net Assets-Internal Service Funds	J-2
Combining Statement of Revenues, Expenses, and Changes in Fund Net Assets- Internal Service Funds	J-6
Combining Statement of Cash Flows-Internal Service Funds.....	J-8
Statement of Changes in Assets and Liabilities-Agency Fund.....	J-12
Capital Assets Used in the Operation of Governmental Funds:	
Comparative Schedules By Source.....	K-1
Schedule By Function and Activity	K-2
Schedule of Changes By Function and Activity	K-6

STATISTICAL INFORMATION

Financial Trends

Net Assets by Component – Last Six Fiscal Years	L-1
Changes in Net Assets – Last Six Fiscal Years	L-2
Fund Balances, Governmental Funds –Last Ten Fiscal Years	L-4
Changes in Fund Balances, Governmental Funds - Last Ten Fiscal Years.....	L-5

Revenue Capacity

Assessed Value and Actual Value of Taxable Property – Last Seven Fiscal Years.....	L-8
Direct and Overlapping Property Tax Rates – Last Ten Fiscal Years.....	L-10
Principal Property Tax Payers – Current Year and Nine Years Ago.....	L-12
Property Tax Levies and Collections – Last Ten Fiscal Years.....	L-13

TABLE OF CONTENTS (continued)

STATISTICAL INFORMATION (continued)

Debt Capacity

Ratio of Outstanding Debt By Type – Last Ten Fiscal YearsL-14
Ratio of Net General Bonded Debt Outstanding – Last Ten Fiscal YearsL-14
Direct and Overlapping Governmental Activities DebtL-15
Legal Debt Margin Information – Last Ten Fiscal Years.....L-16
Pledged Revenue Coverage – Last Ten Fiscal YearsL-17

Demographic and Economic Information

Demographic and Economic Statistics – Last Ten Calendar YearsL-19
Principal Employers – Current Year and Nine Years AgoL-20

Operating Information

Full-time Equivalent City Government Employees by Function/ProgramL-21
Operating Indicators by Function/ProgramL-22
Capital Asset Statistics by Function/ProgramL-24

Insurance Information

Insurance Policies and Fidelity Bonds.....L-26
Schedule of Changes in Liability Estimates for the City of Boise Self-Insurance Plan.....L-34
Schedule of Claims Paid from the City of Boise Self-Insurance Plan.....L-35
Self-Insured Retention Losses vs. ReservesL-36
Workers Compensation Self-Insured Retention Losses vs. ReservesL-38
Schedule of Estimated Workers Compensation ClaimsL-40
Schedule of paid claims from the Boise City Self-Insured Workers
Compensation PlanL-40

SINGLE AUDIT

Schedule of Federal Financial Awards and Passenger Facility Charges Expended
for the Fiscal Year Ended September 30, 2006M-1
Report on Internal Control Over Financial Reporting
and on Compliance and Other Matters Based on an Audit of Financial
Statements Performed in Accordance with *Government Auditing Standards*M-5
Report on Compliance With Requirements Applicable to the
Passenger Facility Charge Program and on Internal Control Over ComplianceM-7
Report on Compliance with Requirements Applicable to Each Major Program
and Internal Control Over Compliance in Accordance with OMB Circular A-133.....M-9
Schedule of Findings and Questioned Costs.....M-11

This page intentionally left blank

INTRODUCTORY SECTION

Back side of divider

January 26, 2007

Honorable Mayor
Members of the City Council,
Citizens of Boise City and
Employees,

In accordance with State statutes and City Code, I herewith transmit the Comprehensive Annual Financial Report (CAFR) for the City of Boise as of September 30, 2006, and for the year then ended. Under State law, copies of these audited financial statements will be submitted to the Idaho Legislative Council. The audit was performed by the independent auditing firm, Eide Bailly LLP, in accordance with generally accepted governmental auditing standards.

Responsibility for both the accuracy of the information presented and the completeness and fairness of its presentation, including all disclosures, is vested in the City. Management believes that the data, as presented, is accurate in all material respects; that it is presented in a manner designed to fairly set forth the financial activity of the City's various funds; and that all disclosures necessary to enable the reader to gain the maximum understanding of the City's financial affairs have been included. To provide a reasonable basis for making these representations, management of the City of Boise has established a comprehensive internal control framework that is designed both to protect the government's assets from loss, theft, or misuse and to compile sufficient reliable information for the preparation of the City of Boise's financial statements in conformity with U.S. generally accepted accounting principles (GAAP). The City's framework of internal controls has been designed to provide reasonable, rather than absolute, assurance that the financial statements will be free from material misstatement. As a general rule, the cost of internal controls should not outweigh their benefits. As management, we assert that, to the best of our knowledge and belief, this financial report is complete and reliable in all material respects.

The goal of the independent audit was to provide reasonable assurance that the financial statements of the City of Boise for the fiscal year ended September 30, 2006, are free of material misstatement. The independent audit involved examining, on a test basis, evidence supporting the amounts and disclosures in the financial statements;

assessing the accounting principles used and significant estimates made by management; and evaluating the overall financial statement presentation. The independent auditor concluded, based upon the audit, that there was a reasonable basis for rendering an unqualified opinion that the City of Boise's financial statements for the fiscal year ended September 30, 2006, are fairly presented and in conformity with GAAP. The independent auditors' report is presented as the first component of the financial section of this report.

The independent audit of the financial statements was part of a broader, federally mandated "Single Audit" designed to meet the special needs of federal grantor agencies. The standards governing Single Audit engagements require the independent auditor to report not only on the fair presentation of the financial statements, but also on the audited government's internal controls and compliance with legal requirements, with special emphasis on internal controls and legal requirements involving the administration of federal awards. These reports are contained in the Single Audit section of this report.

GAAP requires that management provide a narrative introduction, overview, and analysis to accompany the basic financial statements in the form of Management's Discussion and Analysis (MD&A). This letter of transmittal is designed to complement MD&A and should be read in conjunction with it. The City's MD&A can be found immediately following the report of the independent auditors.

Profile of City Government

Boise City was chartered in 1866 under the laws of the Territory of Idaho. Since 1961 the City has been governed using a strong mayor organization. Pursuant to Code, the Mayor is the chief executive officer (CEO) of the City and directs its operations, participating with a six-member City Council in developing policy. The Council is organized into several policy groups typically comprised of two Council members each. The Mayor's Chief of Staff, department directors and a representative of the Employee Advisory Committee (EAC) comprise the Executive Management Team (EMT). This group recommends budget and operational priorities to the Mayor and City Council. In March 2005, the Mayor and City Council approved a reorganization that created the Department of Finance and Administration. The Department Head is in charge of various divisions handling financial and administrative matters, and serves as the City's chief financial officer (CFO).

Boise City provides the following services: public safety (police and fire), parks and recreation, libraries and culture, community services (planning and development services), aviation and public transportation, public works, cemetery, downtown on-street parking services, and general government. The streets and sidewalks are owned and maintained by the Ada County Highway District (ACHD). The City's financial report also includes the Capital City Development Corporation (CCDC). While CCDC is a component entity of the City, its financial statements are reported separately. Additional information on CCDC can be found in Note IV. O in the notes to the financial statements.

The city limits enclose an area of about 66 square miles. The city's "area of impact" contains approximately 120 square miles. The "area of impact" is the planned potential

size of the city urban service area approved by the county commissioners. The city's estimated population for 2006 is 211,473.

Factors Affecting Financial Condition

The information presented in the financial statements is perhaps best understood when it is considered from the broader perspective of the specific environment within which the City of Boise operates.

Local economy. Boise is the center of business and government activity within the State of Idaho, serving as its economic hub. The city provides financial, medical and commercial services for southern Idaho and portions of eastern Oregon. Corporate headquarters of several major firms contribute to the strong Boise economy with a healthy mix of business, technology, education, health care, retail, manufacturing, government and the military and professional communities, all working together to provide stability and promise for Boise's residents. Construction, notably most recently in the commercial sector, is a principal economic driver, and several local companies, such as Micron Technology, have been hiring and investing in the region. In May, Micron announced plans to build a new multi-million dollar facility in Boise and hire 75 new workers as part of a joint venture with another company to improve the manufacture of memory chips.

Boise also has two regional medical centers and extensive associated medical services, and is the center of governmental facilities. These comprise significant portions of the City's market value, but are exempt from ad-valorem taxation under Idaho Code. Also important to the City's economy are the activities of the federal and state government including the National Interagency Fire Center, which coordinates fire fighting on public lands throughout the United States, and a Veterans Affairs medical center.

The seasonally adjusted area unemployment rate, based on the October 2006 Idaho Employment Report, was 3.0 percent, down 0.3 percent from one year ago. Much of this significant employment increase was in the commercial construction sector. The City's economy has continued to benefit from strong construction activity but clear indications portend to a slowing housing market and more sustainable growth rates. That said, permit fees for general, business, and subdivision applications exceeded budgeted revenue by approximately \$2.4 million, or 47 % in the recently concluded FY 2006 fiscal year.

As of September 2006, total passenger traffic at the Boise Airport increased 5 percent over the same time last year. This represents approximately 275,000 more people passing through the Airport each month. Operating revenue in FY 2006 increased over \$2 million, or 10 percent, primarily due to increased parking revenue and car rental concessions.

During the past year, several major construction projects were at or near completion. Saint Alphonsus Regional Medical Center is well along in constructing its Center for Advanced Healing, a \$161.2 million, nine-story patient care tower on the medical center campus in west Boise. It is due for final completion early in 2008. The \$60 million, 500,000 square

feet BoDo (Boise Downtown) mixed-use project opened its doors in October 2005 and recently reached 95 percent occupancy, including several major national retailers. Last spring, the Banner Bank building was completed, an eleven story, 185,000 square feet class-A office structure that houses the bank's downtown branch office on its ground floor.

In June, the Minneapolis-based SuperValu Inc. announced its acquisition of Albertson's Inc., a Boise-based grocery retailer with a wide presence in the intermountain west, the northwest and southern California. Albertson's was among the top five in market valuation among City taxpayers with a sprawling headquarters complex located in the southeast section of the City. City officials have expressed concern that the relocation of Albertson's corporate main offices could lead to a loss of \$11 million Albertson's annually paid in state and local taxes, and in its generous community donations. SuperValu's future plans for maintaining an intermountain regional headquarters presence in Boise remain unclear.

The development of a downtown residential "skyscraper" in bankruptcy for several years has a possible re-birth as several legal issues that have caused the project to languish were resolved in mid-year. The former Boise Tower project, now referred to as The Residences at Boise Place, is planned to become at 34 floors the tallest building in Idaho.

Software giant Microsoft gained its initial Boise presence in its purchase last summer of local software developer ProClarity.

The Downtown Boise Mobility Study final report was released in 2005 and its partners have been pursuing funding for implementation. Valley Regional Transit, the area's public transportation entity that is largely funded by City resources, has secured a \$9.5 million federal assistance grant to design and construct a multimodal transportation center and explore options for creating a much-needed downtown people "circulator".

Long-term financial planning. In recent years, the City has endeavored to maintain a totally uncommitted "cash-flow" reserve that was initially targeted to remain at 5 percent of annual revenues. Guidelines of the Government Finance Officers Association (GFOA) formally recommend 5 percent to be the minimum level and that this reserve range up to 15 percent. During its June 2005 Budget Workshop, the City Council directed that the general fund cash flow reserve goal be re-set at 8 percent of budgeted revenue. It was further established that the reserve requirement should be achieved using one-time monies over a five-year period at a minimum amount of \$500,000 per annum. The cash-flow reserve, as of September 30, 2006, was \$6.23 million, or 4.8 percent of operating revenues. On December 19, 2006 the City council allocated an additional \$500,000 to these reserves, bringing the total to \$7.4 million, which is 5.7 percent of FY 2007 operating revenues.

In the winter and spring of 2005, the Mayor and City Council conducted an ambitious and thorough Strategic Planning process that established a Vision of where they wanted the City to go, set a Mission Statement of what Boise is as a City, and defined its key Values. A Strategy Map and Balanced Score Card were important outcomes of the first phase of this strategic update. In addition, the Mayor and Council identified several principal policy

focus areas, and delineated initiatives, goals and objectives for each.

In early fall of this year, Phase II of the City's Strategic planning initiative began in earnest. The Strategy Map that was developed as part of the initial phase will be actualized in FY 2007 by two processes. A six-year business planning model will be developed by every department in the organization, creating an actionable road map to realize the strategic goals and initiatives. As well, a new leadership model for the Mayor and Council will be created that identifies clear roles and accountabilities for each. A change management process will enable the City's leaders to propel the implementation of department business plans and the attainment of its strategic objectives.

During the 2002-2003 budget process, the City Council approved a debt initiative to refinance eligible general-fund-supported debt in order to reduce annual debt service (by extending the term and securing lower interest rates). With the annual debt service that would be made available in the general fund, the City had planned to issue debt for the construction of a new police headquarters and for construction of branch libraries. The refinance was done in December 2001 and January 2002. A request for judicial validation on the police facility was denied. Accordingly, the City set aside over a four-year period, FY 2004 through FY 2007, a total of \$10 million. This resource will be used to enlarge and update public safety facilities. On February 7, 2006, a \$38 million bond levy election was held for the purposes of building three branch library/community centers in west, east and northwest areas of the city. The measure failed to gain the "super-majority" required by the Idaho Constitution to pass a tax levy-supported bond, but a 57 percent "yes" vote indicated the clear support of a majority of Boise citizens for enhanced library services. Finally, in mid-April the Idaho Supreme Court reversed a District Court decision to allow the Boise Airport to issue debt to expand its parking garage without a citizen vote. The Supreme Court's opinion hinged on its opinion that garage parking expansion did not meet the Idaho Constitutional rigor that it be "ordinary and necessary." This decision will clearly impact the City of Boise and other local governments in Idaho as they plan future capital infrastructure financing in an era of high growth in both population and demands for services.

Like many other governmental entities across the country, the City is grappling with implementation of fiscal impacts from the recent Government Accounting Standards Board (GASB) pronouncement (Statement 45) that set out revised standards for reporting post-employment health benefits (PEHB). Boise City has traditionally funded most of its PEHB, such as life insurance but it has not funded insurance "rate subsidies" it provides on behalf of its retired employees. Booking the value of this benefit, referred to as the Annual Required Contribution or ARC, will become a GASB-required activity beginning in the City's FY 2008. Actuarial analysis recently completed has indicated the City's Unfunded Actuarial Liability (UAL) for pre-Medicare subsidies for its retirees is over \$13.3 million, with an associated ARC of just under \$1.9 million. These amounts are expected to increase significantly over time unless fundamental changes are made in the way the City structures its post-employment health-care benefits.

Major Enterprise Funds

Airport – In FY 2006, Boise Airport (BOI) enplanements were up 5 percent from the previous fiscal year period, significant because FY 2005 enjoyed record enplanement levels. Growth in this statistic is a key indicator of airport strength as it is the key driver of nearly all revenue sources of the facility. Operating revenues again topped \$20 million, and with a \$2 million increase from the prior fiscal year, were up 10 percent. This was largely due to continued high passenger activity and the burgeoning use of parking facilities and car rentals. The new air terminal enjoys full functionality and all support systems are reliably operational. Airport and City officials teamed with the Idaho Congressional Delegation to obtain Federal Aviation Authority (FAA) approval to install and fund the Cat III approach lighting. This will enable aircraft to land in heavy fog with very low visibility, and will be operational in FY 2008. Agreement was also reached with the FAA to begin construction of a new, 21st century Air Traffic Control Tower in 2009. Both of these milestone projects are major accomplishments for the Airport which could not proceed on either without FAA authorization and funding.

Sewer – The City's sanitary sewer system is comprised of over 600 miles of pipeline. It provides wastewater treatment service not only to Boise, but also to five sewer districts and to Garden City. In 2006 the system treated well over 10 billion gallons of wastewater.

Solid Waste – Allied is the solid waste service provider under contract to the City of Boise; it serves approximately 65,000 residential and 3,800 commercial customers. The recycling component of the service diverted approximately 7,500 tons of material from the landfill. Eight household hazardous-waste pick-up sites are distributed throughout the city.

Foothills Levy- Included in the capital projects fund are funds that have been received as a result of a special election held in 2001 creating a two-year levy for a total of \$10 million. The funds have been used to purchase land in the foothills of Boise City and other projects as allowed under the levy. The Foothills Learning Center has been operating since April 2005 as an environmentally focused community facility. At September 30, 2006, approximately \$4.14 million remained in the Foothills Capital Projects Fund and is available for re-budgeting.

Cash Management Policies and Practices. Cash temporarily idle during the year was invested in compliance with the City's investment policy. This policy has been adopted by resolution of the City Council and certified by the Association of Public Treasurers of the United States and Canada. It is currently being updated. Information regarding the types, amounts and risks of investments held are contained in the footnotes in Note IV.A. The maturities range from one day to 4.64 years. The average maturity is 401 days. The average yield on the last day of the fiscal year was 5.03 percent and the total return for the fiscal year was 4.59 percent. Total return includes the effect of increases in market value during the current year. However, increases in market value do not necessarily represent trends that will continue or cash that will be available. Increases in market value are temporary changes in the fair value of investments that the City intends to hold to maturity.

Awards and Acknowledgments

The Government Finance Officers Association (GFOA) awarded a Certificate of Achievement for Excellence in Financial Reporting to the City of Boise for its Comprehensive Annual Financial Report (CAFR) for the fiscal year ended September 30, 2005. This is the eleventh consecutive year that the City of Boise has earned this distinction. In order to be awarded a Certificate of Achievement, the City published an easily readable and efficiently organized CAFR. This report satisfied both GAAP and applicable legal requirements.

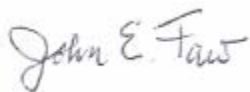
The Certificate of Achievement is valid for a period of one year only. We believe that our most recent CAFR will continue to meet the Certificate of Achievement Program's requirements and are submitting it to the GFOA to determine its eligibility for another certificate.

In addition, Boise City government also received the GFOA's Distinguished Budget Presentation Award for its biennial budget for FY 2005/2006. In order to qualify for the Distinguished Budget Presentation Award, the City's budget document was judged to be successful in several categories, including its serving as a policy document, a financial plan, an operations guide, and a communications device.

The preparation of this report would not have been possible without the efficient and committed services of key staff in the Department of Finance and Administration under the leadership of Controller Mike Middleton and Financial Services Manager Tonya Wallace. I would also like to express my appreciation to all City staff whose dedicated efforts resulted in a timely and successful completion of this year's report.

The Mayor and City Council have continued to demonstrate a commitment to allocate the resources needed to ensure its ability to account, audit, report, monitor, and control the financial operations and transactions of the City of Boise in a responsible and progressive manner.

Sincerely,

A handwritten signature in cursive script that reads "John E. Faw".

John E. (Jef) Faw
City of Boise, ID
Director of Finance and Administration
Chief Financial Officer

Certificate of Achievement for Excellence in Financial Reporting

Presented to

City of Boise
Idaho

For its Comprehensive Annual
Financial Report
for the Fiscal Year Ended
September 30, 2005

A Certificate of Achievement for Excellence in Financial Reporting is presented by the Government Finance Officers Association of the United States and Canada to government units and public employee retirement systems whose comprehensive annual financial reports (CAFRs) achieve the highest standards in government accounting and financial reporting.



A handwritten signature in black ink, appearing to read "Ronald J. Hawn".

President

A handwritten signature in black ink, appearing to read "Jeffrey R. Emer".

Executive Director

ORGANIZATION

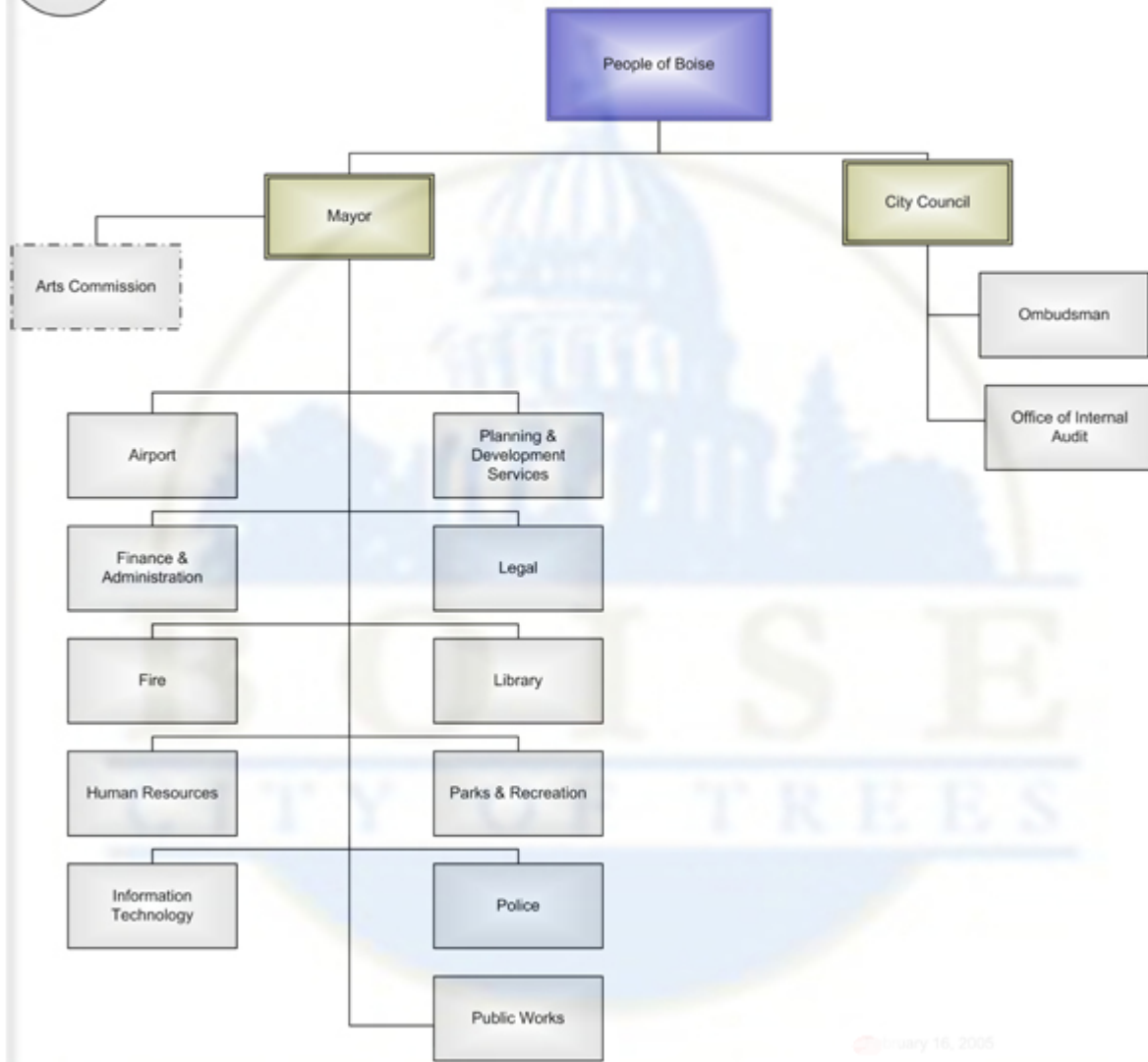
Boise City is one of 200 cities in the State of Idaho. Bellevue is the only charter city left in Idaho. All other cities are "creatures of the state" authorized for organization by the Idaho Constitution. "The legislature shall provide by general laws for the incorporation, organization and classification of the cities and towns in proportion to the population," (Idaho Constitution Article 12, Section 1). "The legislature by general and uniform laws shall provide for such township, precinct and municipal (city) officers as probable convenience may require," (Idaho Constitution Article 18, Section 6). Boise City operates under the mayor-council system of government as a city of the first class under the general laws of the State of Idaho with a mayor and six council members. The mayor is elected to a four-year term. Council members are also elected for four-year terms, three being elected every two years to stagger the terms for continuity. The Mayor is the chief executive officer for the City, responsible for carrying out policies set by the council and for enforcing the ordinances existing in the City Code.

The Mayor is assisted in this responsibility by Department Director's appointed by the Mayor and confirmed with the consent of the council. For reporting purposes, the City is divided into eight general classifications:

- 1) General Government
- 2) Fire
- 3) Police
- 4) Parks and Recreation
- 5) Culture
- 6) Community Service
- 7) Community Development
- 8) Interest and Fiscal Charges

The major classifications are subdivided into divisions and those units are further subdivided into service units for budgeting, accounting and reporting purposes.

City of Boise



City of Boise
 Names of Principal City Officials
 As of September 30, 2006

<u>Name</u>	<u>Position – Title</u>	<u>Department</u>
Beiter, David	Mayor	Executive
Jordan, Maryanne	Council member – Council President	Legislative
Clegg, Elaine	Council member – Council Pro Tem	Legislative
Bisterfeldt, Vernon	Council member	Legislative
Eberle, David	Council member	Legislative
Shealy, Alan	Council member	Legislative
Tibbs, Jim	Council member	Legislative
Anderson, John	Director	Aviation and Public Transportation
Beaty, Garry	Director	Information and Technology
Chatterton, Bruce	Director	Planning and Development Services
Colaiani, Cary	City Attorney	Legal
Cottrell, Stephen	Director	Library
Faw, John (Jef)	Director	Finance and Administration
Hall, James	Director	Parks and Recreation
Masterson, Michael	Chief	Police
Mickelson, Charles	Director	Public Works
Miller, Shawn	Director	Human Resources
Riley, Jade	Administrative Assistant to the Mayor and Council	Mayor’s Office
Ross, Renn	Chief	Fire