



BOISE CITY PUBLIC WORKS DIRECTOR'S REPORT 2008

What's in the Works

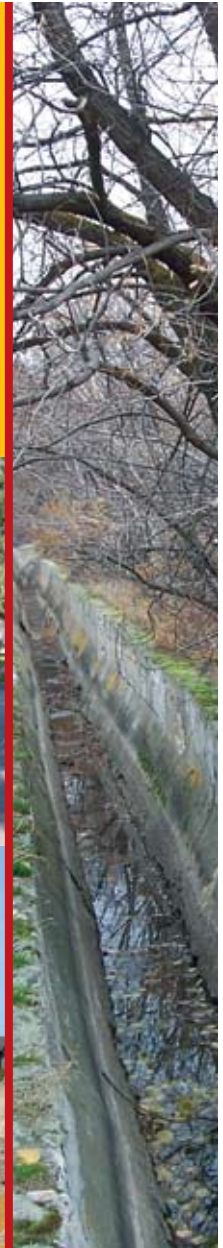


A Message from the Director



This past year was one of transition and change in Public Works, ushering in a new era for the department. In August I was honored to take over leadership of Public Works from my good friend, long-time director and City engineer, Chuck Mickelson. In addition, the department hired new leaders for the operations and administration divisions in December 2008, and hired a replacement for long time environmental manager, Carl Ellsworth, in January 2009.

But with new leadership comes the opportunity and responsibility to further enhance and improve our award-winning sewer





facilities, along with our trash and recycling, water quality, geothermal heating, and environmental education programs. Our goal is to preserve Boise's status as the most livable city in the country.

During the upcoming year we will implement new solid waste and air quality programs, along with making facilities planning decisions that will have a long lasting impact on our community. All of our plans have been guided by citizens who gave graciously of their time to sit on different advisory committees. The Solid Waste Advisory Committee developed several recommendations which are the backbone of our long-term solid waste plan. The first phase will be implemented this fall as Boiseans become the first residents in the Treasure Valley to receive automated curbside trash and co-mingled recycling. The Climate Protection Committee was formed to determine ways our community can

work together to reduce air pollution and our carbon footprint. Citizens also formed a unique "sounding board" process to help staff determine which options are best for the Boise Wastewater 2020 sewer facilities plan.

By working with citizens we can ensure the programs we develop and the facilities we build meet the community's needs. Public Works will continue to serve our growing community with a commitment to use our resources effectively to protect the health, safety and welfare of the community leaving a legacy of enhanced quality of life for Boise. We take this commitment seriously and we hope to provide the citizens of Boise with the best services possible next year and in the years to come.

Thank you,
Neal Oldemeyer

Idaho's First Water Education Center Opens



After 17 years of planning, the Boise WaterShed environmental education center opened its doors in the spring of 2008. Idaho's first ever water-specific education center promotes water stewardship by teaching people of all ages how to protect and conserve our precious resource for future generations. Boise WaterShed Exhibits, Inc. (BWE) raised more than \$1 million to fund the facility's hands-on exhibits. A full-time educator has designed classes to take advantage of the high-tech exhibits and create a fun, interactive place for Treasure Valley children and their families to visit. More than 4,500 people visited the Boise WaterShed in the first six months. The 6,500 sq. ft. facility features a 40-seat theatre, a library, and \$220,000 of public artwork. The building also houses administrative offices for West Boise Wastewater Treatment Facility staff, and it's the City's first LEED (Leadership in Energy Efficient Design) certified project.

Providing Downtown Boise with Renewable Energy



The City of Boise operates the largest direct use low temperature geothermal heating system in the United States. The system heats nearly 60 businesses downtown including Boise City Hall, Banner Bank, the Hoff, and Washington Mutual Buildings. Geothermal heat is an environmentally sound, renewable source of energy. Hot geothermal water is pumped from the foothills to the buildings where it is used for heat. The water is then collected and injected back into the geothermal aquifer. This popular form of heat could soon find its way to Boise State University. Idaho Senator Mike Crapo obtained \$175,000 of federal funding that will allow Public Works to study the possible expansion of the heating system across the Boise River for use at Boise State.

Public Input Helping to Guide Department Decisions



With guidance from Boise Mayor David Bieter and the Boise City Council, Public Works is also getting valuable input from your neighbors when it comes to future planning. The following citizen committees are helping Boise City and Public Works decide the best course of action when it comes to managing solid waste and water resources, and protecting our air quality.

MAKING SURE TRASH HAS A HOME

Beginning in the summer of 2006, the City of Boise began a solid waste strategic planning process to identify the best methods to meet future solid waste needs of residents. A Solid Waste Advisory Team identified solid waste issues and opportunities for residents and business owners. From that research, the City will unveil Idaho's first combined automated trash collection and co-

mingled recycling program starting in the summer of 2009. Every Boise resident will receive a convenient cart to carry trash to the curb and all recyclable material will be put in one container. Thanks to the Solid Waste Advisory Team, Public Works is also improving efforts to promote and educate the public about waste reduction and recycling programs, and possibly securing land for a future transfer station.

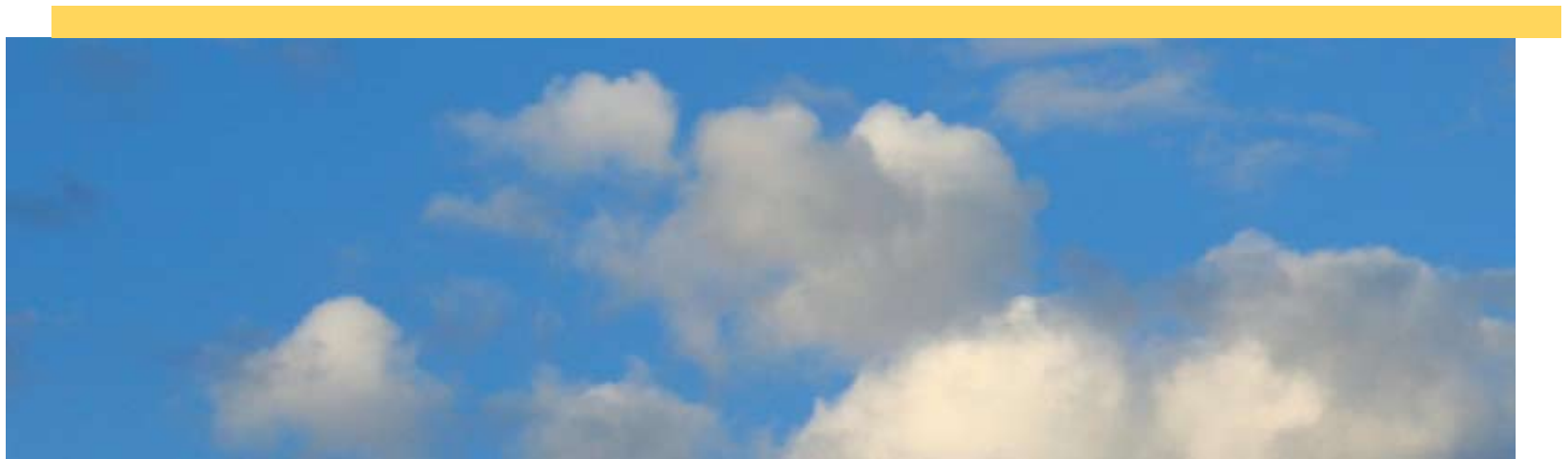




REDUCING GREENHOUSE GAS EMISSIONS

In December, 2006, Mayor Bieter appointed a Climate Protection Advisory Committee to assist in the development of greenhouse gas reduction strategies for Boise City government facilities and the community. The committee presented its final report with a list of 85 recommendations in October 2008. Re-

duction strategies include energy-efficient building practices, use of alternative fuels and improved transportation and land use planning. While the City's greenhouse gas emissions are a small percentage of the community's, the committee made it clear Boise City needs to take active steps to show a commitment to reducing greenhouse gas emissions.





ENSURING A SAFE AND SUSTAINABLE WATER SUPPLY

Along with the committees on solid waste and air, citizens helped develop a long-term strategy to ensure that an adequate, safe and sustainable supply of clean water is available for the community. The Water Resources Advisory Committee (WRAC) recommended to City leaders and staff long-term future options for water resource management. The WRAC recommendations include creating a water resources management unit in Public Works that would investigate securing more water rights, future water reuse options and the possibility of creating some type of regional water resources committee. The WRAC had representatives from United Water Idaho, the Boise Project Board of Control, local business community members, conservationists, economists, agricultural community members, and Boise residents.





COMMUNITY SOUNDING BOARD HELPS SHAPE WASTEWATER 2020 PLAN

Since 1995 the City of Boise's wastewater treatment plants (West Boise/Lander Street) have been guided by a long-term facilities plan. Given its success, Public Works is in the midst of creating another plan which will set our strategy through the year 2020, plus provide a vision looking forward 50 years from now. A community sounding board has been convened to make sure our planning efforts and concepts for the future meet public approval. Members of the CSB consist of a wide group of stakeholders from the construction and development industry, to municipal agencies, to neighborhood association representatives and environmental groups. Issues being addressed are impacts of new National Pollutant Discharge Elimination System (NPDES) permit requirements, potential expansion of the sewer service area boundary, and future utilization of the Lander Street Wastewater Treatment Facility.





COMMUNITY INVOLVEMENT IN THE ENVIRONMENT

Diverting waste from the landfill and keeping our water clean are two ways in which Boise residents are protecting our environment. The department's commercial recycling program has taken off since June 2006 when the program began. The program, designed for businesses and apartment complexes, has over 400 customers and is expected to grow in 2009. In addition, the downtown recycling program has added three new containers with another three containers to be installed in the near future.

In addition to recycling, residents are protecting water quality. Storm drain marking continues to be a popular activity among



For more on the City's environmental programs go to www.CityofBoise.org/Departments/Public_Works/EnvironmentalResourceCenter

community groups with over 1400 storm drains marked last year. Along with Eddy Trout, the Partners for Clean Water mascot, over 500 volunteers collected over 11 cubic yards of trash from the Boise River at the annual Boise RiverSweep event.

For more than a decade, the City's master sewer plan has anticipated extension of sewer infrastructure to serve Southeast Boise. Substantial industrial and commercial development is envisioned for this area and Public Works is making sure future growth will be accommodated. Construction started in October 2008 to provide sewer to a proposed WinCo distribution facility located in Southeast Boise. Public Works is also working closely with the Ada County Highway District (ACHD) in constructing the Harris Ranch lift station, also located in Southeast Boise. The station will be located near the new East Parkcenter Bridge, currently under construction.

In addition, Public Works is making sure Boise's existing sewer infrastructure is sound. Inspecting, maintaining, and repairing existing sewer lines is an integral part of the department's ongoing operations.



Sewer Construction Moves Forward



Saving the Environment at Wastewater Treatment Facility



Innovative changes to West Boise Wastewater Treatment Facility (WWTF) operations are making a difference in our environment. A multi-year project to use more digester gas at the West Boise WWTF is allowing the City to reduce its carbon footprint by using less natural gas to heat facility buildings. Matt Hightree, a Public Works engineer working on the project, estimates that 55% less natural gas is being used to heat buildings than in 2007. The savings is expected to increase as more buildings make the switch to digester gas starting in 2009.



2008 PUBLIC WORKS SHOWCASE HIGHLIGHTS

- Vista neighborhood gathering promotes new glass recycling center
- Citizen Monitoring Day at the Boise WaterShed Environmental Education Center
- Time to turn on irrigation & green up the lawn
- EnviroGuard Award applications now being accepted
- Compost bins for sale
- Air Quality Awareness Week presentation "The Greening of Yellowstone"
- Free service offers curbside collection of old appliances and furniture
- Wastewater Treatment Plant tours are a great way to learn more about how Boise City keeps our community's water clean for future generations
- Are you aware of the dangers of mercury exposure?
- Residents can keep our community safe by reporting street light outages
- Residents asked to take old/unused drugs to HHW collection sites

Web enhancements

The Public Works website has been retooled to not only emphasize the services in which the public is most interested, but also highlight new programs or projects of which the public may not be aware. The website now also provides up-to-date information on construction projects, events, and utility rate changes so the public is always provided with the latest information. Public Works staff can monitor web usage to see how the website is being used and if the website is effective in program outreach efforts. Boise residents will see more web enhancements throughout the coming year.



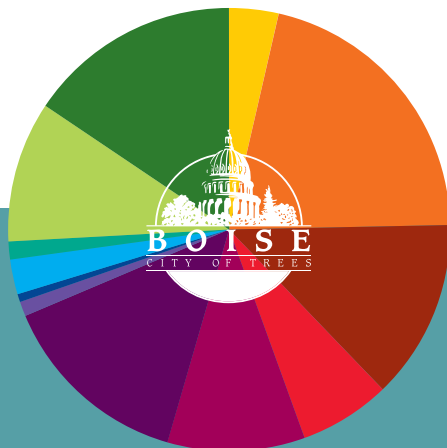
[www.CityofBoise.org/
Departments/Public_Works](http://www.CityofBoise.org/Departments/Public_Works)

Fiscal Year 2008 Expense Budgets

BOISE CITY EXPENSE BUDGET: \$327,346,407

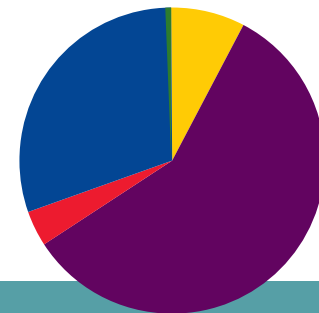
Public Works department services compose approximately 21% of the Boise City budget for fiscal year 2008:

- Customer Service Support: 3.7%
- Public Works: 21%
- Police: 13.1%
- Planning and Development Services: 6.7%
- Parks and Recreation: 10%
- Other: 14.4%
- Debt: .9%
- Mayor and Council: .7%
- Library: 2.4%
- Legal: 1.3%
- Fire: 10.5%
- Aviation and Transportation: 15.5%



PUBLIC WORKS EXPENSE BUDGET: \$68,466,145

- General Fund
- Sewer
- Geothermal
- Solid Waste
- Irrigation



General Fund: Municipal lighting, efforts to improve air quality, programs aimed at safeguarding Boise's groundwater resources and project management for other city departments compose the general fund expenditures of the Public Works Department. These expenditures account for 7.8% of the department's annual budget.

Enterprise Fund: The Public Works Department's four enterprise funds cover the costs of providing sewer, solid waste, geothermal, and irrigation services. Each fund receives financial support in the form of fees paid by customers who use the services. Sewer and trash bills sent to more than 81 thousand commercial and residential customers generate about \$40.5 million dollars in revenue each year. Wastewater treatment plant improvements and other capital projects triggered by urban growth rely on fees from new connections.

After committing more than 34 years of his life to serving the citizens of Boise, Public Works Director Charles R. “Chuck” Mickelson retired early in 2008. Chuck started with the City in 1974 when the population was just 75,000 people. Since then a lot changed and Chuck helped to create the infrastructure to meet the growing population which now stands at more than 200,000. For instance in 1974 Boise had 2,500 street lights, today over 10,000 lights. In 1974 no geothermal, today the City boasts the largest geothermal heating district in America. Also in 1974 the city maintained 150 miles of sewer pipeline. Under Chuck’s guidance the system grew to 650 miles. Chuck we all owe you a debt of gratitude for making Boise the “Most Livable City in America.” Enjoy your grandchildren and know you will always be missed, but the lessons we have learned from you will never be forgotten. Thank you!



End of an Era

