



## PICNIC PARK - WOODED OPTION

### Description:

Large front lawn area redeveloped into a picnic area with small park tables and optional shelters, linked by a walking path. This will serve weekend and evening picnic groups as well as weekday lunch groups (who currently eat lunch in parked cars). Small wedding receptions could be served here as well.

Part of the existing grass area will be converted into a wooded area with a variety of tree & shrub species found in the main park. Outdoor artwork and additional meadow areas may be integrated into this option to enhance this space. This space would serve short park trips, and provide support space for the park at large.

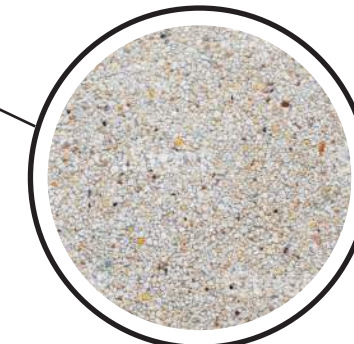
New sidewalk to extend pedestrian connection from Americana Blvd. crosswalk to bicycle parking & entry plaza to provide accessible way to park improvements.



**PARK TABLES**  
(Cast-in-place)



**FLAG POLES**  
(28-Foot)



**EXPOSED AGGREGATE PATHWAYS**  
(New surface)



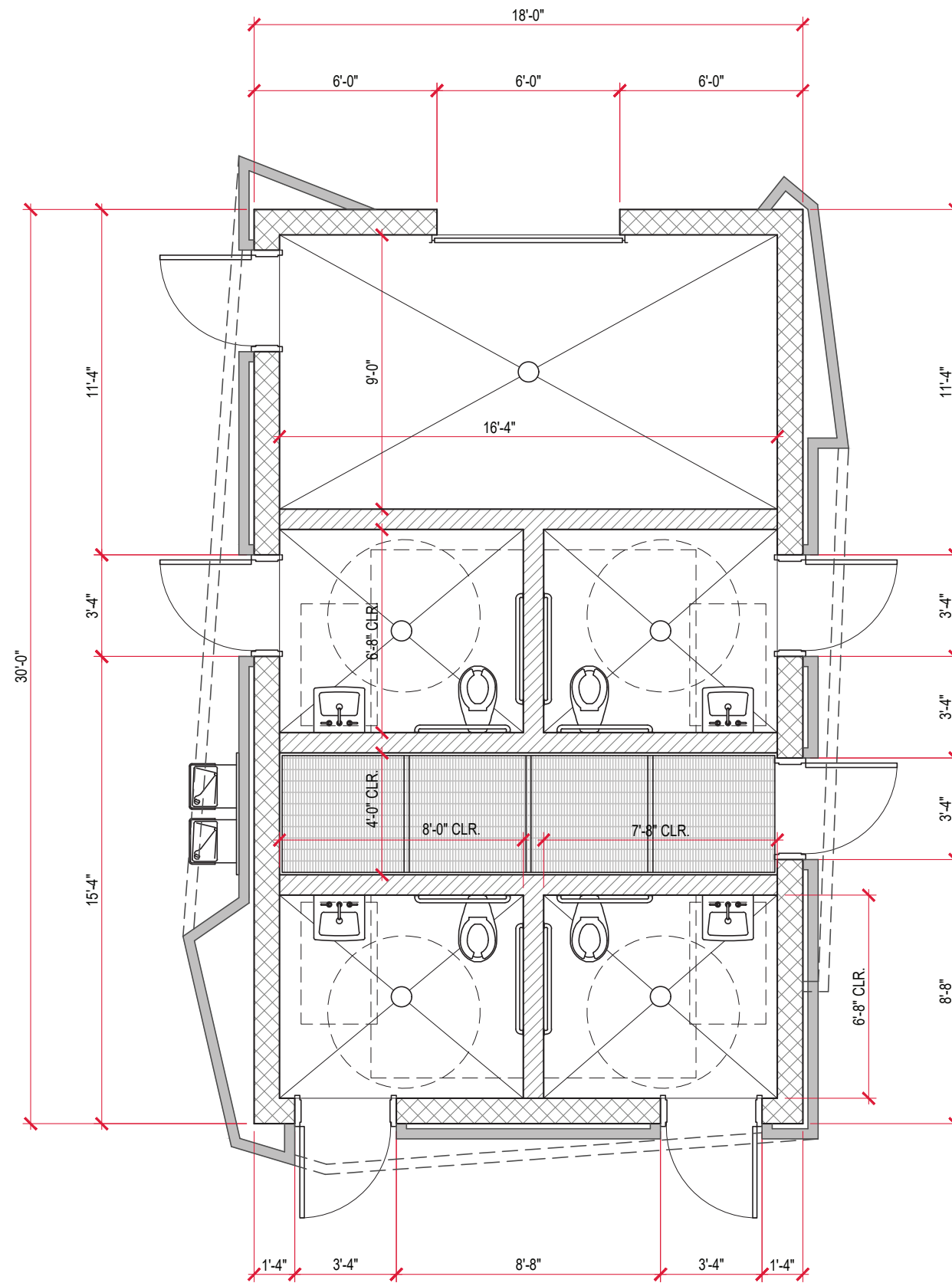
**DECORATIVE LANDSCAPING W/ SANDSTONE BOULDERS**

## PICNIC PARK CONCEPT - WOODED OPTION

**PARK IMPROVEMENTS**  
KATHRYN ALBERTSON PARK  
BOISE, IDAHO



BYRON W. FOLWELL  
EXHIBITS



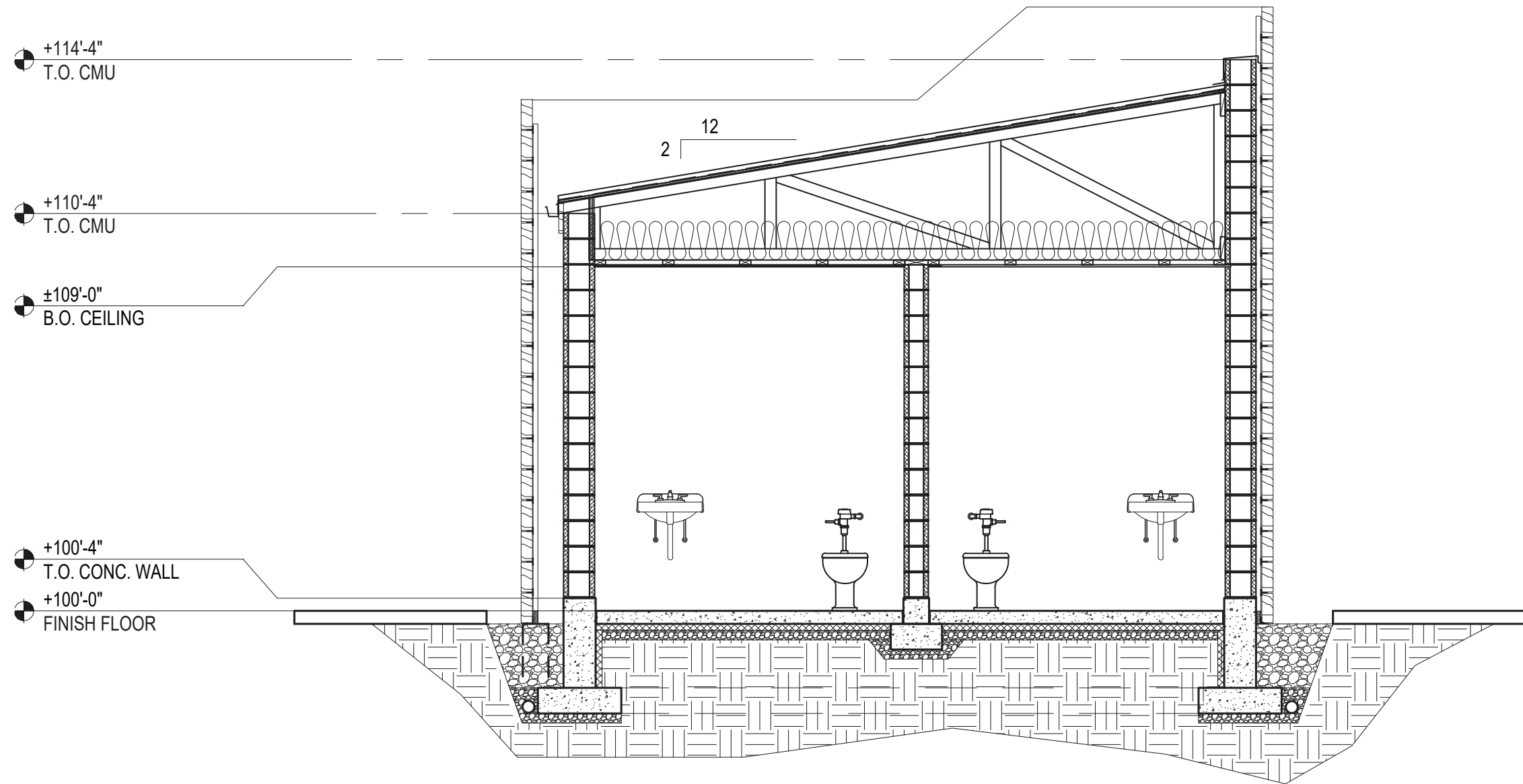
**RESTROOM PLAN**  
 Insulated CMU-block structure  
 Preservative-treated rain-screen  
 Wood roof framing  
 Metal roof

RESTROOM DESIGN OPTIONS

PARK IMPROVEMENTS  
 KATHRYN ALBERTSON PARK  
 BOISE, IDAHO



BYRON W FOLWELL  
 EXHIBITS



**RESTROOM SECTION**  
 Insulated CMU-block structure  
 Preservative-treated rain-screen  
 Wood roof framing  
 Metal roof

**RESTROOM DESIGN**  
**PARK IMPROVEMENTS**  
 KATHRYN ALBERTSON PARK  
 BOISE, IDAHO



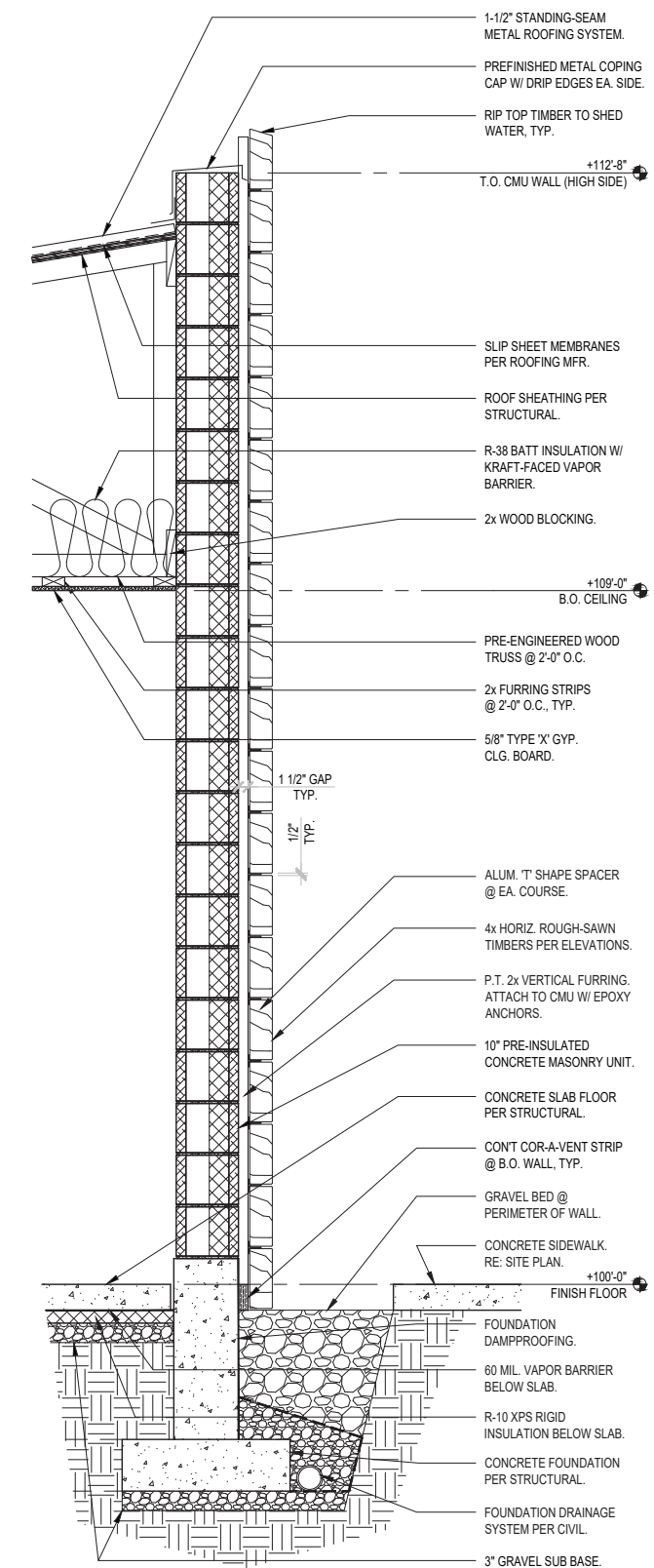
BYRON W. FOLWELL  
 EXHIBITS



**STRUCTURAL / THERMAL SYSTEM**  
 10" Insulated CMU-block structure  
 4" Integral EPS rigid insulation later

**AVAILABLE LOCALLY:**

**MANUFACTURER:** CPG  
**MODEL:** HI-R-H Pre-insulated masonry unit  
**SIZE:** 10"  
**R-VALUE:** Up to R-17 (R-11 for fully-grouted)

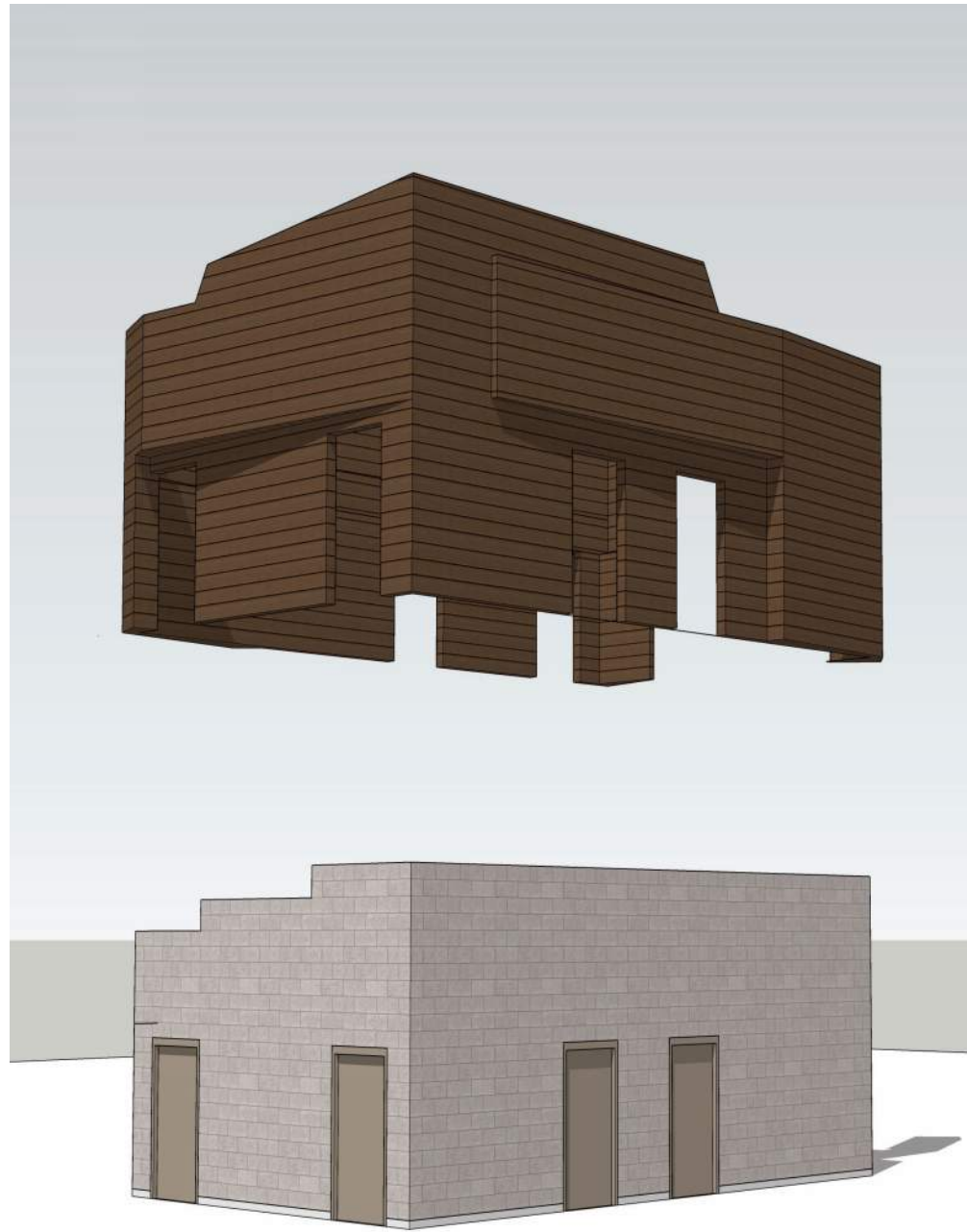


**RESTROOM WALL SECTION**

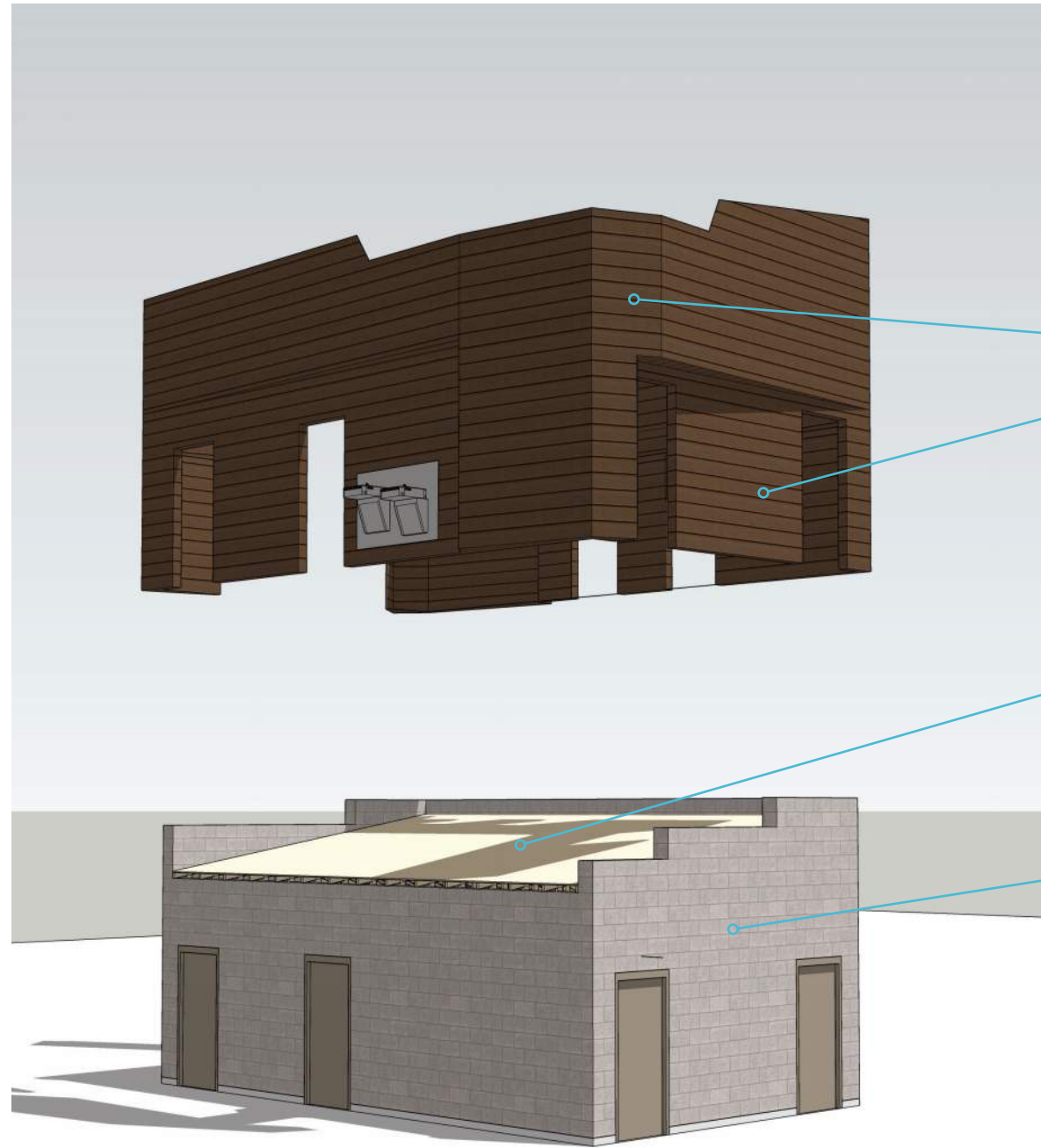
**PARK IMPROVEMENTS**  
 KATHRYN ALBERTSON PARK  
 BOISE, IDAHO



BYRON W FOLWELL  
 EXHIBITS



**PARK SIDE VIEW**  
(SOUTH)



**3**  
TIMBER SIDING  
W/ WOOD FRAMING

**2**  
METAL ROOFING

**1**  
CMU STRUCTURE  
INTERNALLY INSULATED

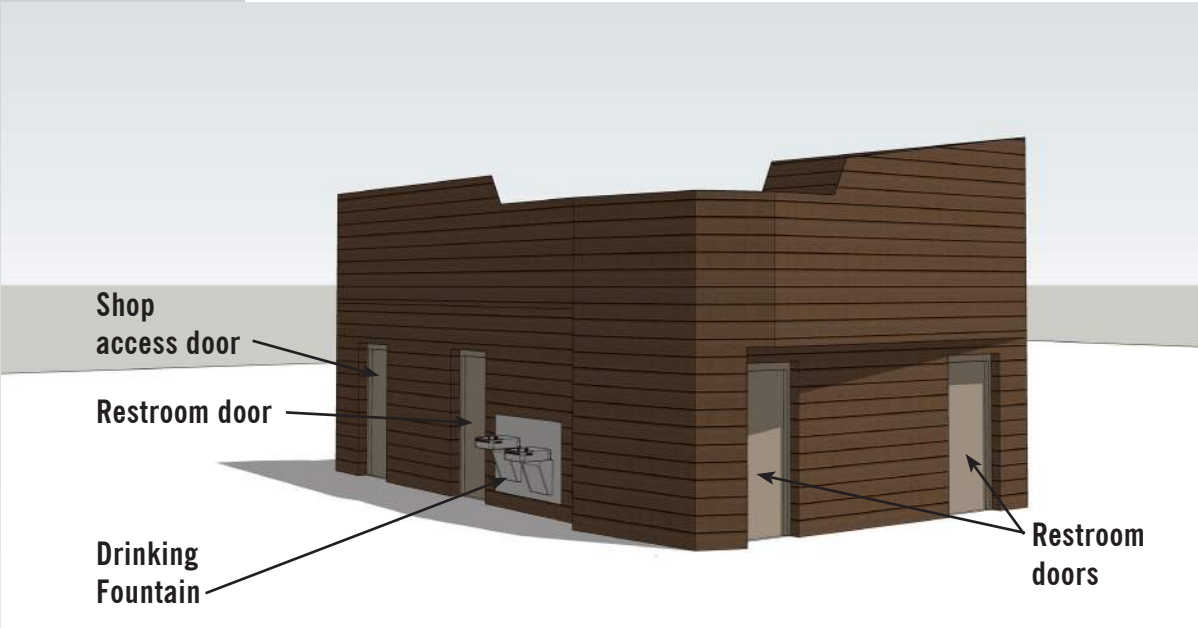
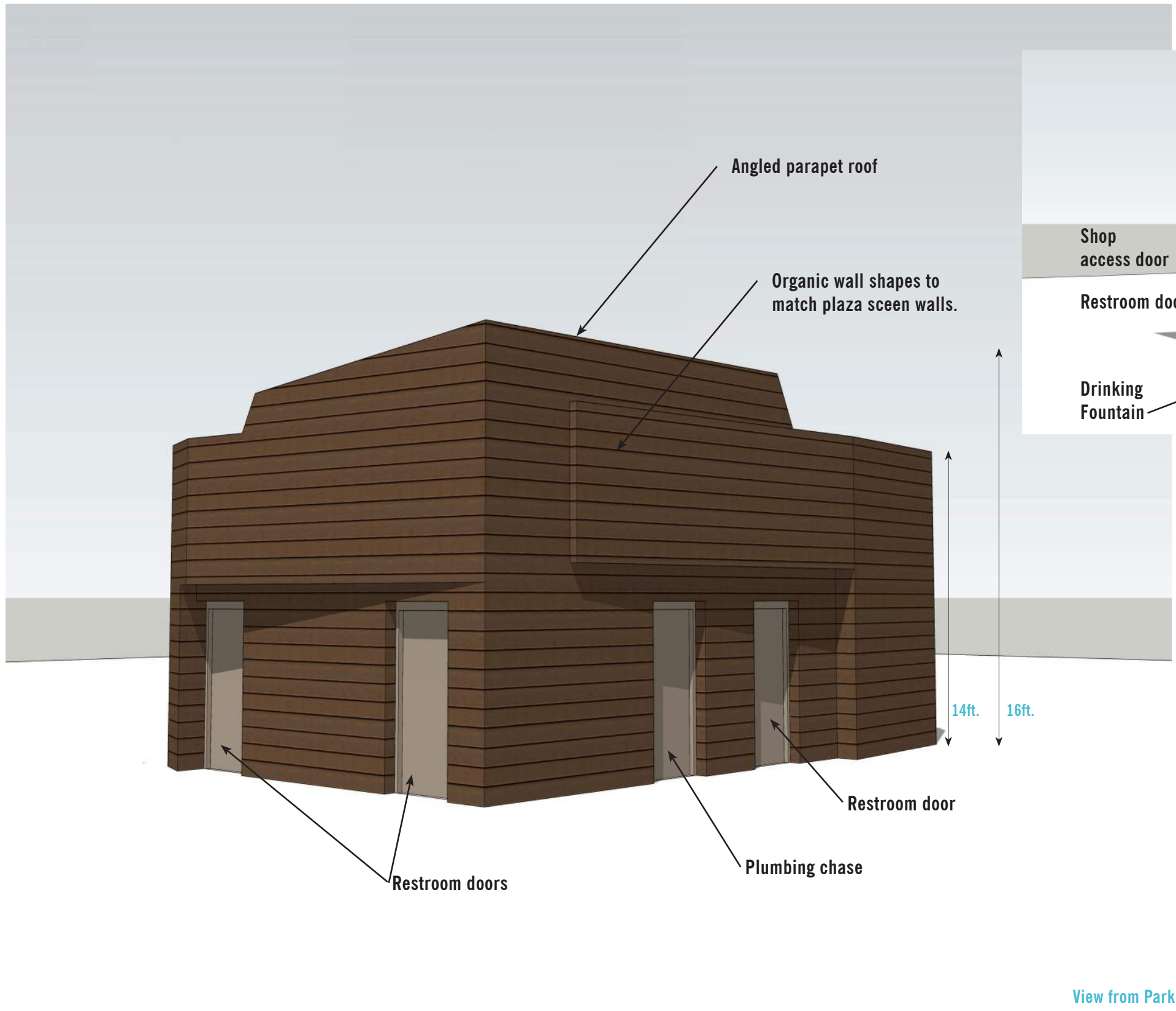
**PARKING LOT VIEW**  
(NORTH)

**EXTERIOR CLADDING SYSTEM - EXPLODED VIEW**

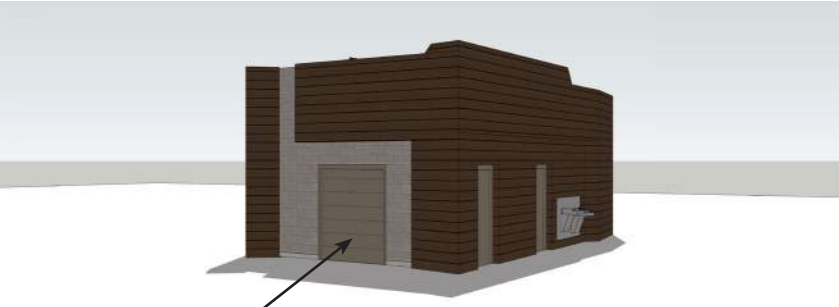
**PARK IMPROVEMENTS**  
KATHRYN ALBERTSON PARK  
BOISE, IDAHO



BYRON W. FOLWELL  
EXHIBITS



View from Parking Lot



Rear Elevation



Northwest View

View from Park