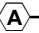




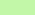




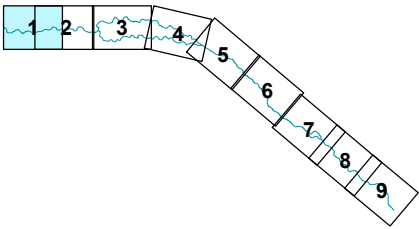
**Legend**

-  Cross Section
-  Channel bathymetry, new topo or floodway rise at max resulted in changes
-  Active channel
-  Smoother transition expected of flow path
-  Reduced floodway to remove structures as allowable by max floodway rise limit of 1.0 ft
-  No Change
-  Effective FIRM floodway areas to be removed
-  Floodway areas to be added to FIRM

**WORK MAP**

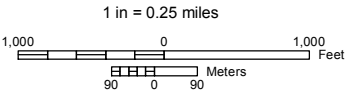


**PAGE INDEX**  
Page 1 of 9



**Boise River East**

Vicinity of Boise, Idaho  
Changes in Floodway since last FIRM








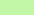


DATE	4/6/2016
DESIGNED	PETERSEN, HOBBS, SCHWARZ
DRAWN	REDAR
CHECKED	SCHWARZ



U.S. Army Corps of Engineers  
Northwest Division  
Walla Walla District



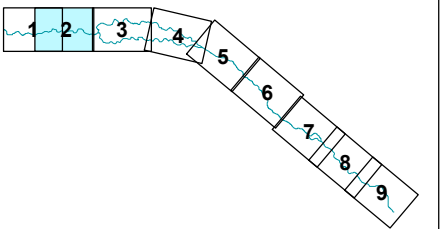
**Legend**

-  Cross Section
-  Channel bathymetry, new topo or floodway rise at max resulted in changes
-  Active channel
-  Smoother transition expected of flow path
-  Reduced floodway to remove structures as allowable by max floodway rise limit of 1.0 ft
-  No Change
-  Effective FIRM floodway areas to be removed
-  Floodway areas to be added to FIRM

**WORK MAP**

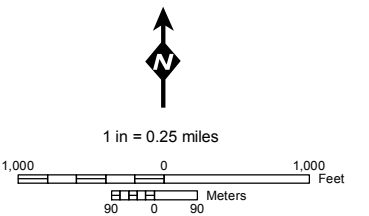


**PAGE INDEX**  
Page 2 of 9



**Boise River East**

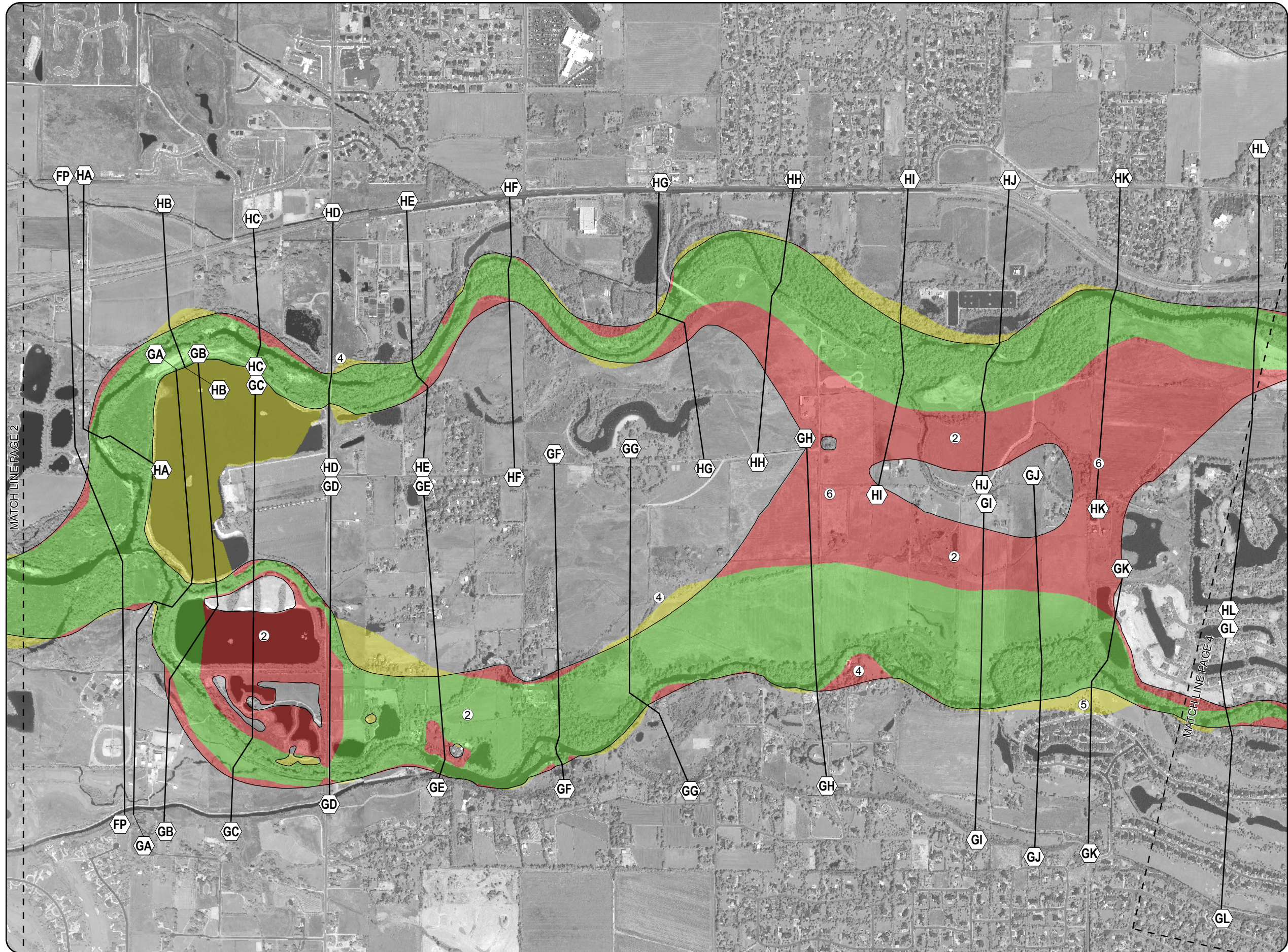
Vicinity of Boise, Idaho  
Changes in Floodway since last FIRM



DATE	4/6/2016
DESIGNED	PETERSEN, HOBBS, SCHWARZ
DRAWN	REDAR
CHECKED	SCHWARZ



U.S. Army Corps of Engineers  
Northwest Division  
Walla Walla District



## Legend

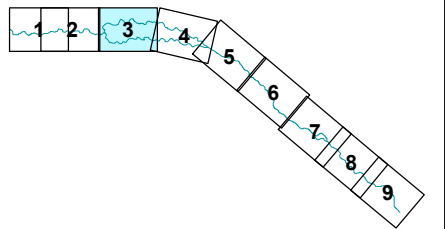
- A** — Cross Section
- ② Channel bathymetry, new topo or floodway rise at max resulted in changes
- ④ Smoother transition expected of flow path
- ⑤ Reduced floodway to remove structures as allowable by max floodway rise limit of 1.0 ft
- ⑥ Floodway needed to account for flow change not accounted for in prior mapping. Channel bathymetry, new topo or floodway rise at max resulted in changes
- No Change
- Effective FIRM floodway areas to be removed
- Floodway areas to be added to FIRM

## WORK MAP



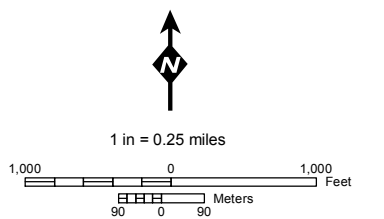
### PAGE INDEX

Page 3 of 9



## Boise River East

Vicinity of Boise, Idaho  
Changes in Floodway since last FIRM

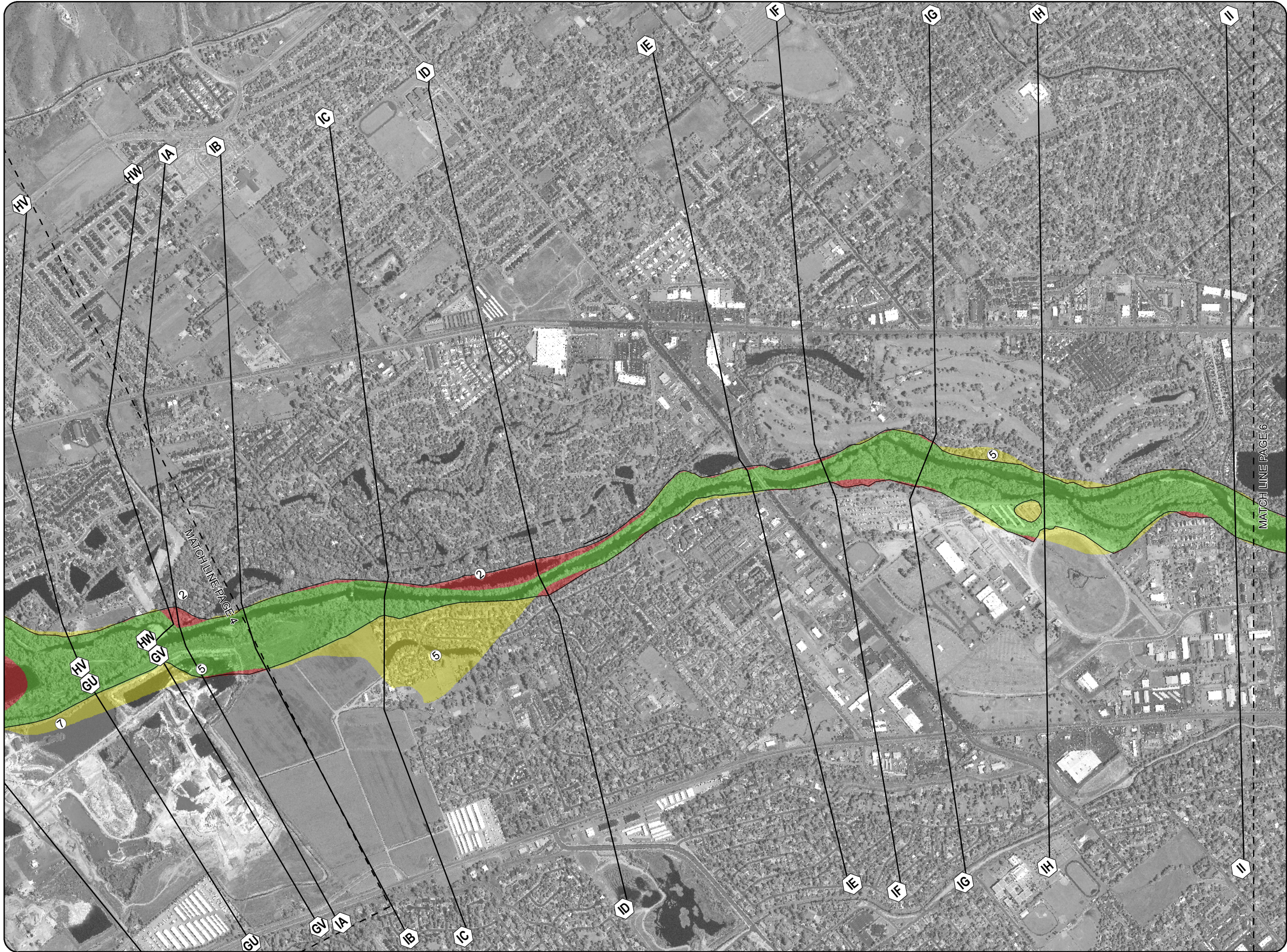


DATE	4/6/2016
DESIGNED	PETERSEN, HOBBS, SCHWARZ
DRAWN	REDAR
CHECKED	SCHWARZ



U.S. Army Corps of Engineers  
Northwest Division  
Walla Walla District





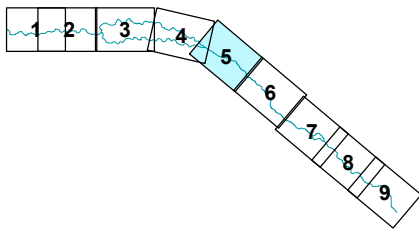
### Legend

- A** — Cross Section
- 2** Channel bathymetry, new topo or floodway rise at max resulted in changes
- 5** Reduced floodway to remove structures as allowable by max floodway rise limit of 1.0 ft
- 7** Fill material cut off floodway shown in effective maps
- No Change
- Effective FIRM floodway areas to be removed
- Floodway areas to be added to FIRM

## WORK MAP

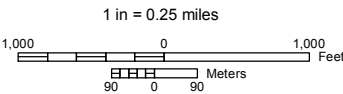


**PAGE INDEX**  
Page 5 of 9



### Boise River East

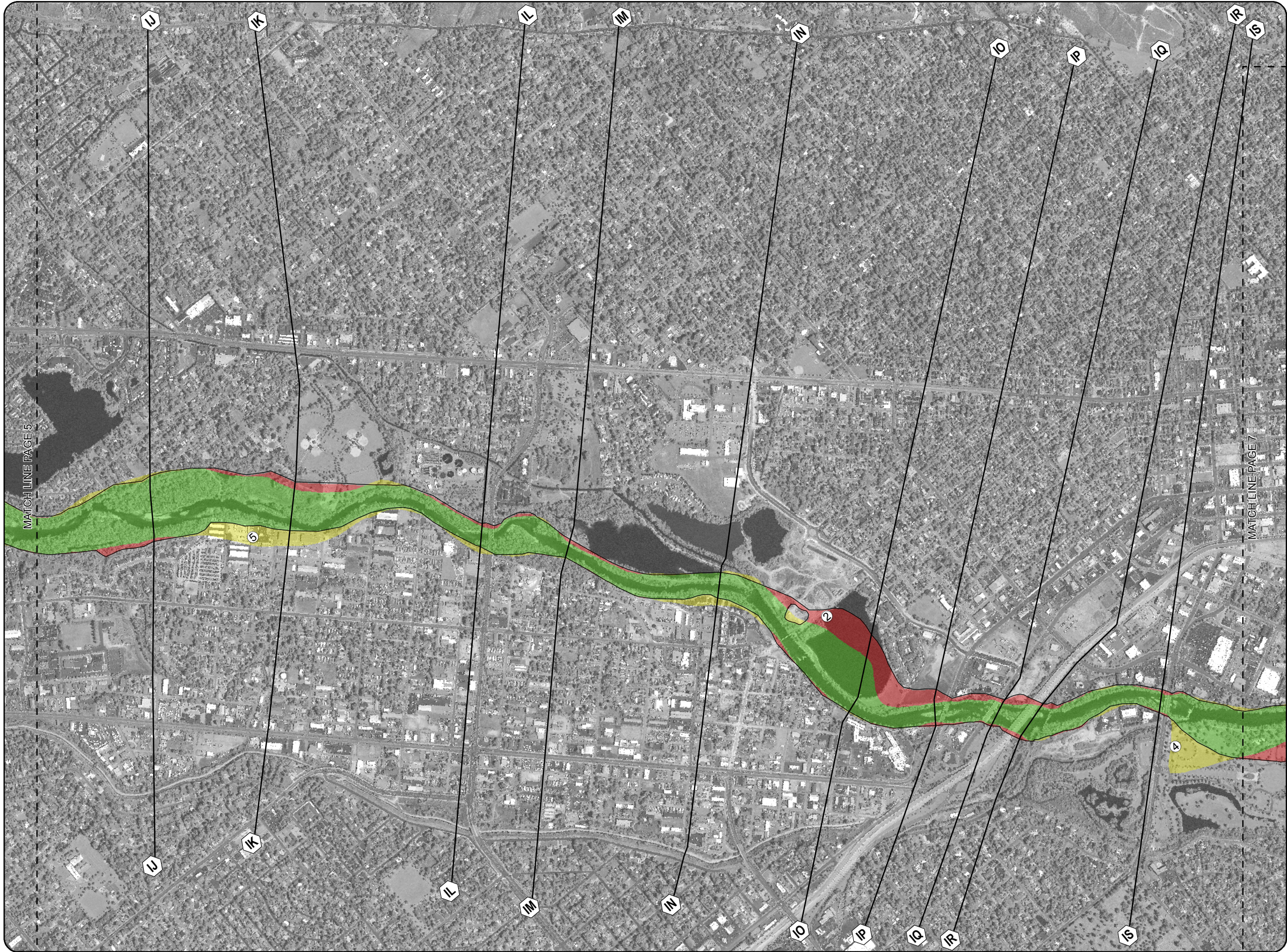
Vicinity of Boise, Idaho  
Changes in Floodway since last FIRM



DATE	4/6/2016
DESIGNED	PETERSEN, HOBBS, SCHWARZ
DRAWN	REDAR
CHECKED	SCHWARZ



U.S. Army Corps of Engineers  
Northwest Division  
Walla Walla District



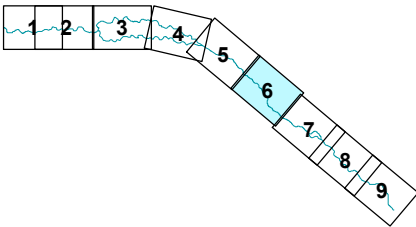
Legend

- Cross Section
- Channel bathymetry, new topo or floodway rise at max resulted in changes
- Smoother transition expected of flow path
- Reduced floodway to remove structures as allowable by max floodway rise limit of 1.0 ft
- No Change
- Effective FIRM floodway areas to be removed
- Floodway areas to be added to FIRM

WORK MAP

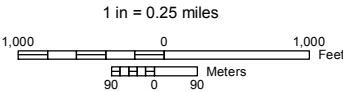


PAGE INDEX  
Page 6 of 9



Boise River East

Vicinity of Boise, Idaho  
Changes in Floodway since last FIRM



DATE	4/6/2016
DESIGNED	PETERSEN, HOBBS, SCHWARZ
DRAWN	REDAR
CHECKED	SCHWARZ



U.S. Army Corps of Engineers  
Northwest Division  
Walla Walla District



### Legend

- Cross Section
- No Change
- Effective FIRM floodway areas to be removed
- Floodway areas to be added to FIRM

## WORK MAP

### PAGE INDEX

Page 7 of 9

## Boise River East

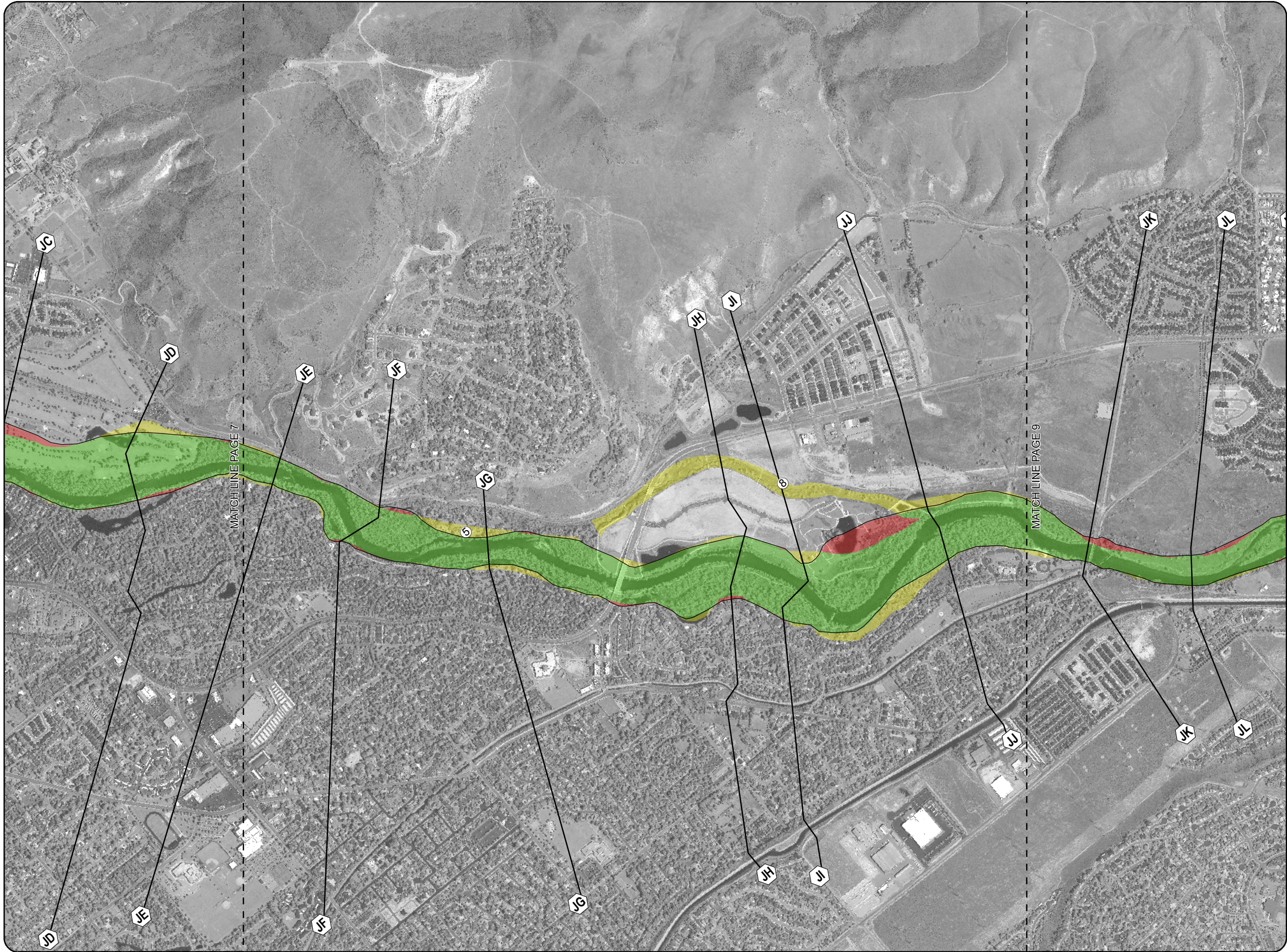
Vicinity of Boise, Idaho

Changes in Floodway since last FIRM

1 in = 0.25 miles

DATE	4/6/2016
DESIGNED	PETERSEN, HOBBS, SCHWARZ
DRAWN	REDAR
CHECKED	SCHWARZ

**U.S. Army Corps of Engineers**  
Northwest Division  
Walla Walla District



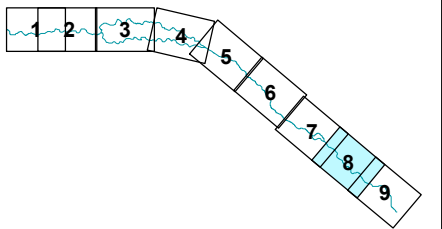
### Legend

- Cross Section
- Reduced floodway to remove structures as allowable by max floodway rise limit of 1.0 ft
- Split floodway removed due to headgate on walling ditch
- No Change
- Effective FIRM floodway areas to be removed
- Floodway areas to be added to FIRM

## WORK MAP

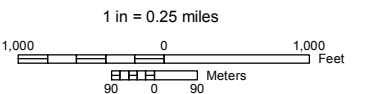


### PAGE INDEX Page 8 of 9



## Boise River East

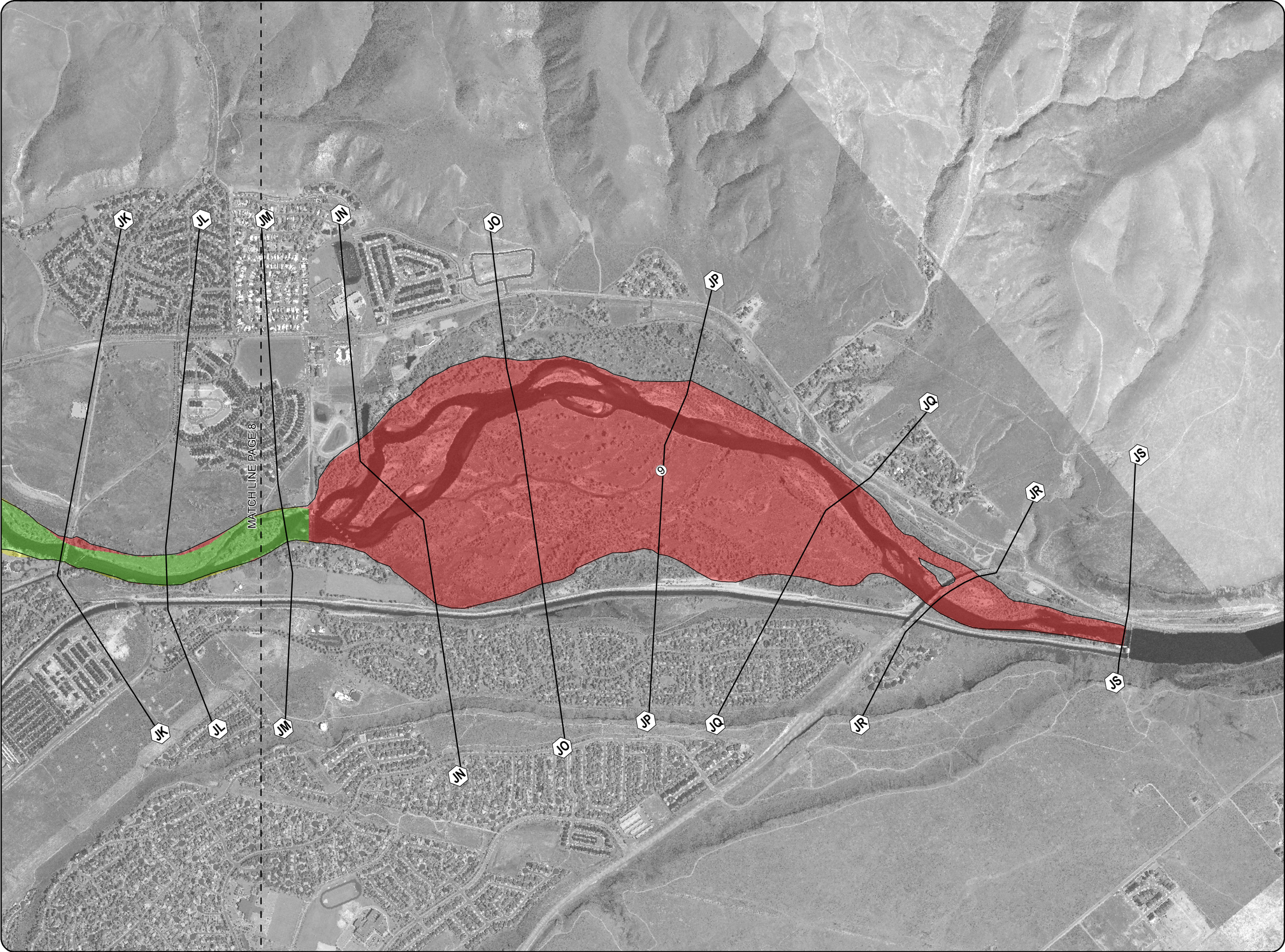
Vicinity of Boise, Idaho  
Changes in Floodway since last FIRM



DATE	4/6/2016
DESIGNED	PETERSEN, HOBBS, SCHWARZ
DRAWN	REDAR
CHECKED	SCHWARZ



U.S. Army Corps of Engineers  
Northwest Division  
Walla Walla District



### Legend

- Cross Section
- New modeling and mapping area
- No Change
- Effective FIRM floodway areas to be removed
- Floodway areas to be added to FIRM

## WORK MAP

### PAGE INDEX

Page 9 of 9

### Boise River East

Vicinity of Boise, Idaho

Changes in Floodway since last FIRM

1 in = 0.25 miles

DATE	4/6/2016
DESIGNED	PETERSEN, HOBBS, SCHWARZ
DRAWN	REDAR
CHECKED	SCHWARZ

**U.S. Army Corps of Engineers**  
Northwest Division  
Walla Walla District