

**Legend**

Cross Section

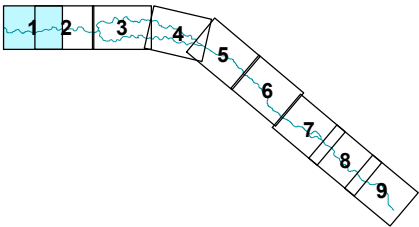
**NoteNumber**

- ① New channel bathymetry and topo data resulted in better defined inundation areas
- ⑥ Fill material reduced flood plain area
- ⑩ Average depth less than 1 foot
- No Change
- Effective FIRM 100 year areas to be removed
- 100 year areas to be added to FIRM

**WORK MAP**

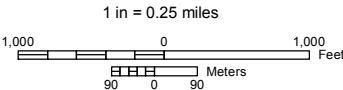


**PAGE INDEX**  
Page 1 of 9



**Boise River East**

Vicinity of Boise, Idaho  
Changes in Floodplain since last FIRM

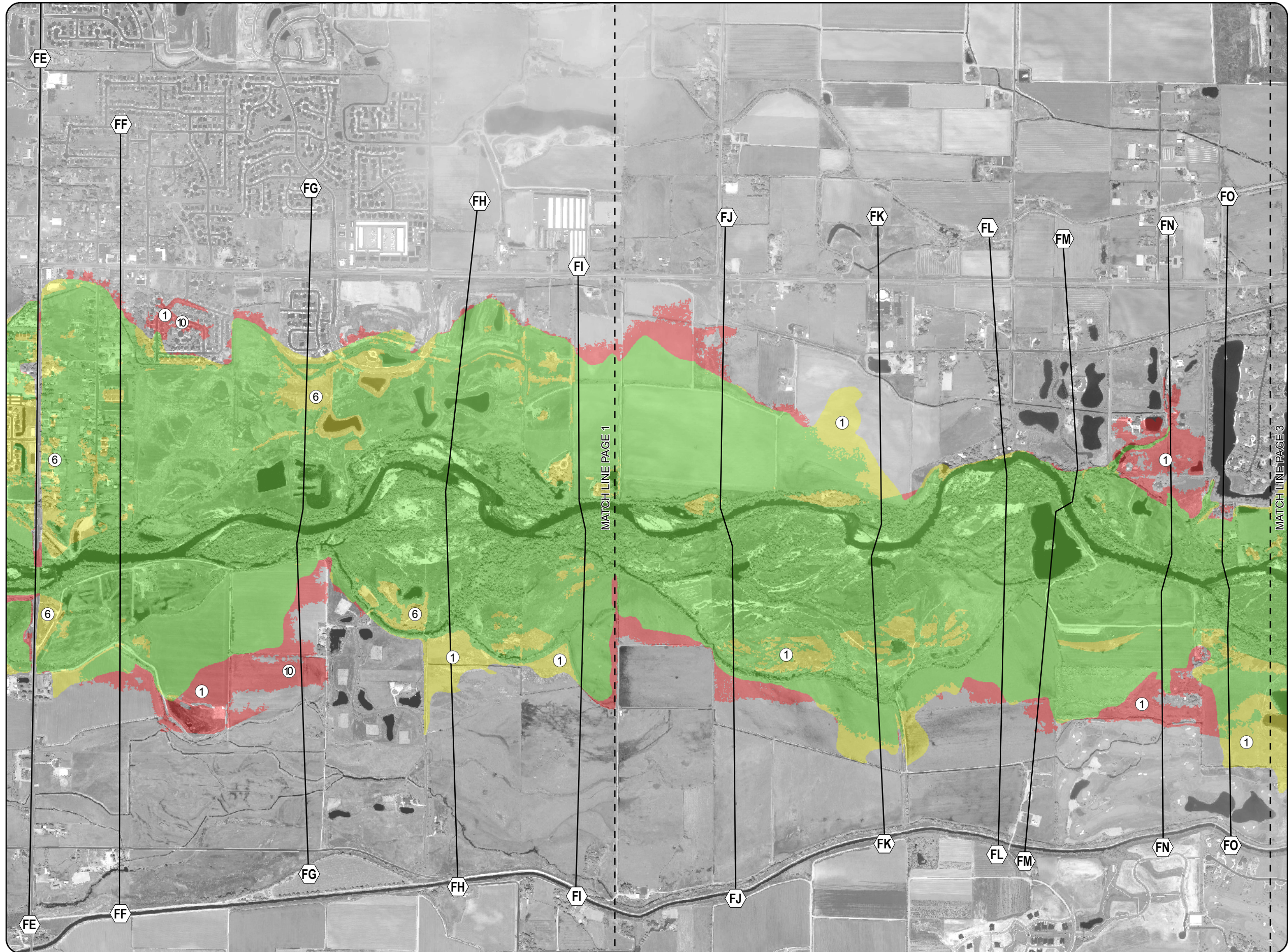


DATE	4/6/2016
DESIGNED	PETERSEN, HOBBS, SCHWARZ
DRAWN	REDAR
CHECKED	SCHWARZ



U.S. Army Corps of Engineers  
Northwest Division  
Walla Walla District





**Legend**

Cross Section

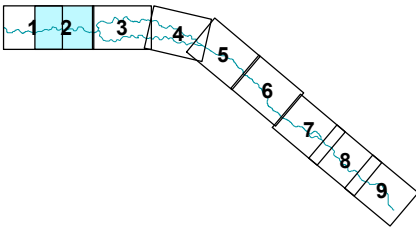
**NoteNumber**

- New channel bathymetry and topo data resulted in better defined inundation areas
- Fill material reduced flood plain area
- Average depth less than 1 foot
- No Change
- Effective FIRM 100 year areas to be removed
- 100 year areas to be added to FIRM

**WORK MAP**

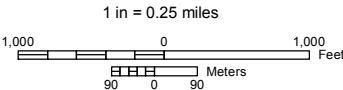


**PAGE INDEX**  
Page 2 of 9



**Boise River East**

Vicinity of Boise, Idaho  
Changes in Floodplain since last FIRM

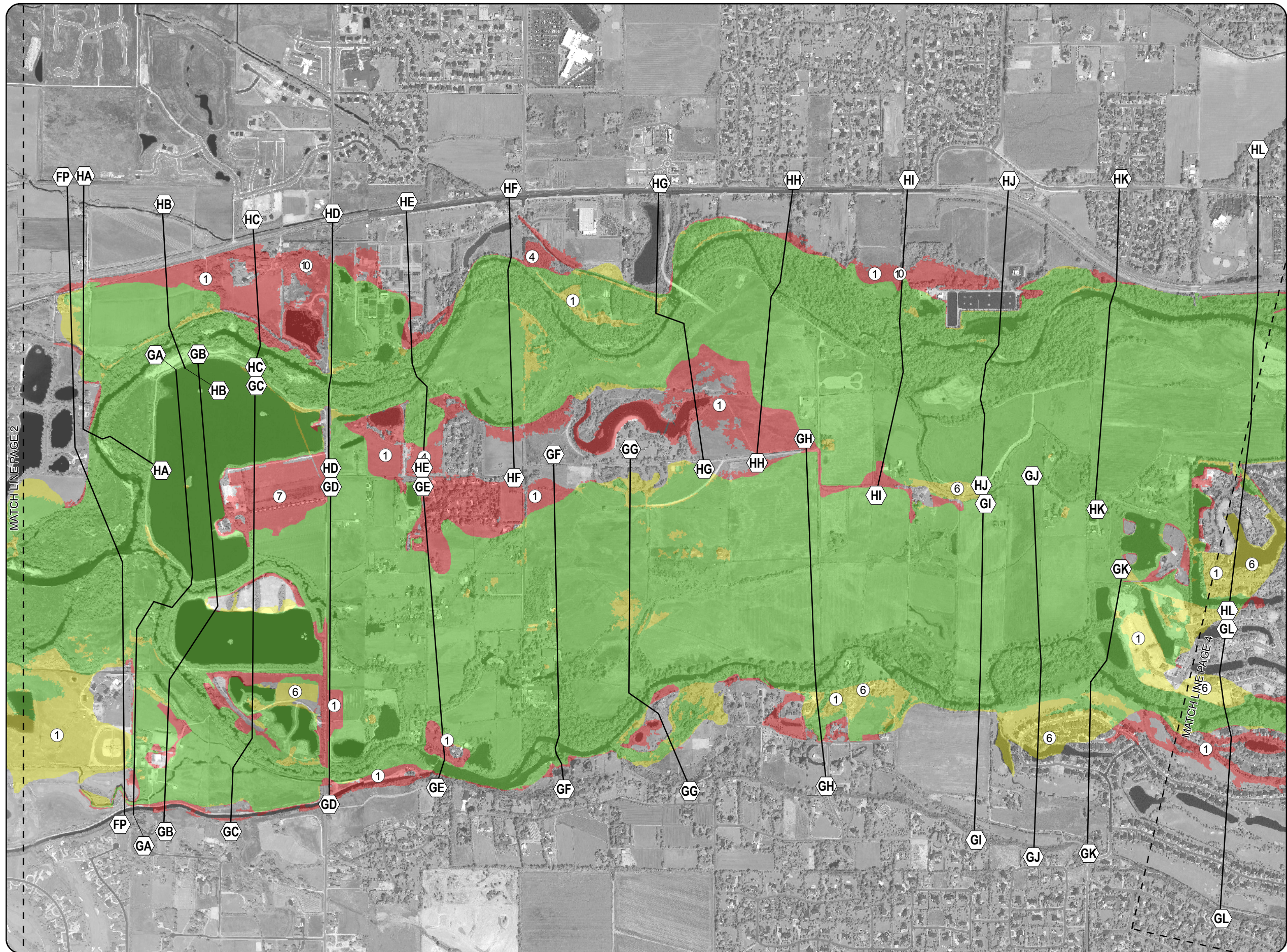


DATE	4/6/2016
DESIGNED	PETERSEN, HOBBS, SCHWARZ
DRAWN	REDAR
CHECKED	SCHWARZ



U.S. Army Corps of Engineers  
Northwest Division  
Walla Walla District





## Legend

**A** — Cross Section

### NoteNumber

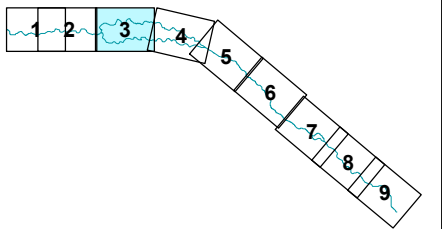
- ① New channel bathymetry and topo data resulted in better defined inundation areas
- ④ Raised WSEL due to removal of floodplain flows due to development
- ⑥ Fill material reduced flood plain area
- ⑦ New model XS extends entire floodplain
- ⑩ Average depth less than 1 foot

- No Change
- Effective FIRM 100 year areas to be removed
- 100 year areas to be added to FIRM

## WORK MAP

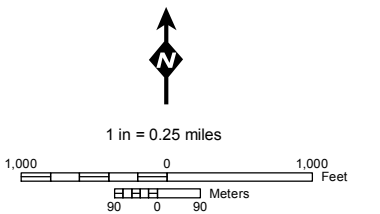


### PAGE INDEX Page 3 of 9



## Boise River East

Vicinity of Boise, Idaho  
Changes in Floodplain since last FIRM

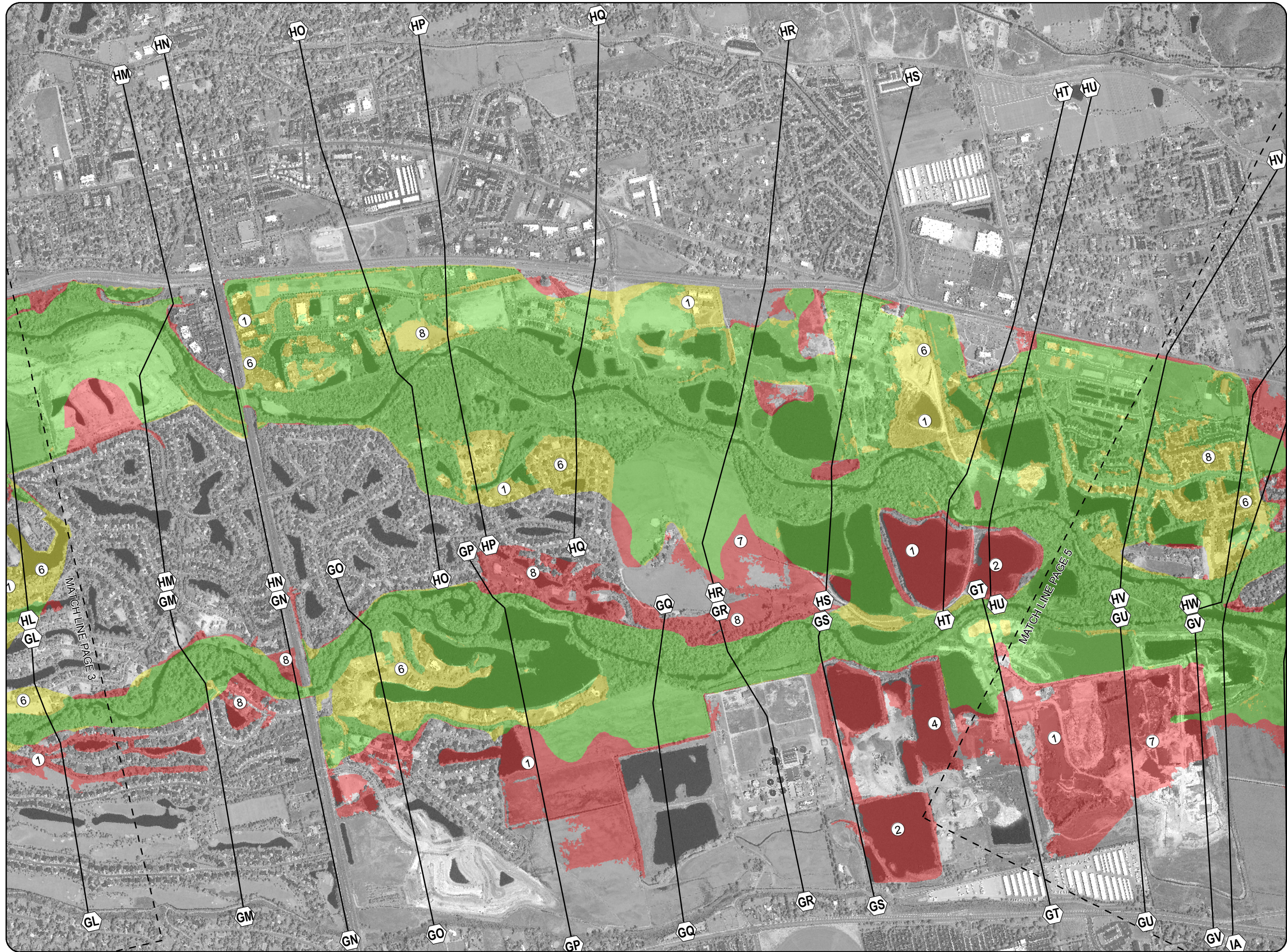


DATE	4/6/2016
DESIGNED	PETERSEN, HOBBS, SCHWARZ
DRAWN	REDAR
CHECKED	SCHWARZ



U.S. Army Corps of Engineers  
Northwest Division  
Walla Walla District





**Legend**

Cross Section

**NoteNumber**

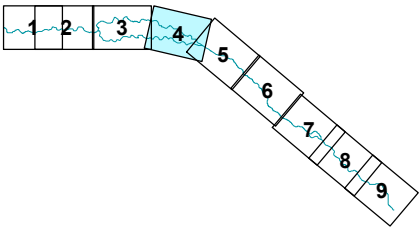
- New channel bathymetry and topo data resulted in better defined inundation areas
- Non-certified levee (not part of NLD) changed to not provide protection
- Raised WSEL due to removal of floodplain flows due to development
- Fill material reduced flood plain area
- New model XS extends entire floodplain
- The change from smooth floodplains to grid

- No Change
- Effective FIRM 100 year areas to be removed
- 100 year areas to be added to FIRM

**WORK MAP**

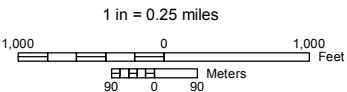


**PAGE INDEX**  
Page 4 of 9



**Boise River East**

Vicinity of Boise, Idaho  
Changes in Floodplain since last FIRM

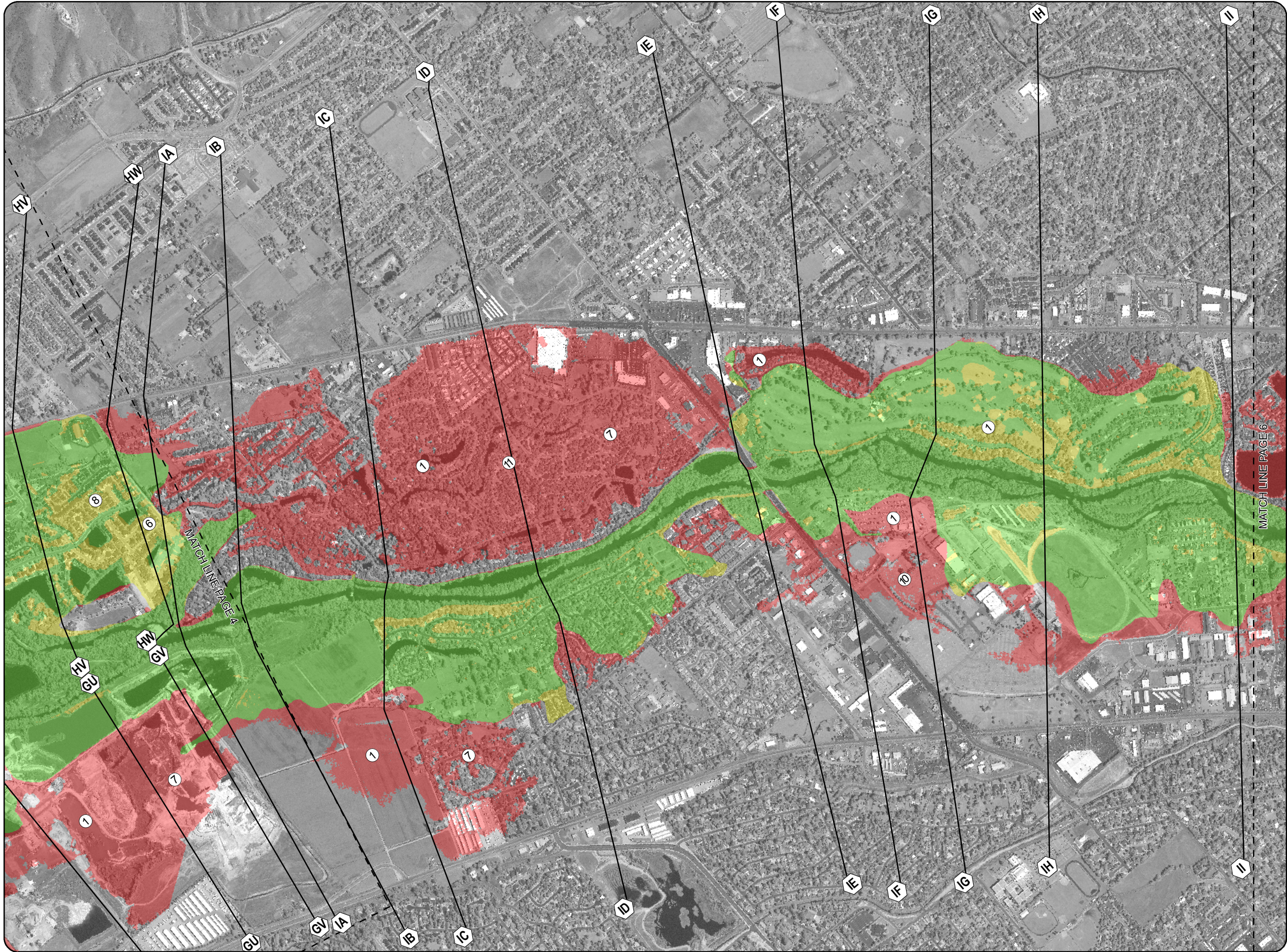


DATE	4/6/2016
DESIGNED	PETERSEN, HOBBS, SCHWARZ
DRAWN	REDAR
CHECKED	SCHWARZ



U.S. Army Corps of Engineers  
Northwest Division  
Walla Walla District





**Legend**

**A** — Cross Section

**NoteNumber**

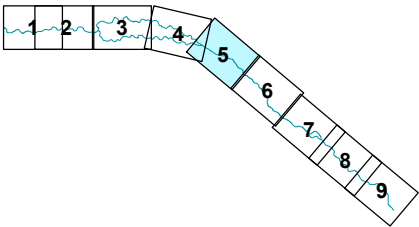
- ① New channel bathymetry and topo data resulted in better defined inundation areas
- ⑥ Fill material reduced flood plain area
- ⑦ New model XS extends entire floodplain
- ⑧ The change from smooth floodplains to grid
- ⑩ Average depth less than 1 foot
- ⑪ Natural valley (no levee protection applied)

- No Change
- Effective FIRM 100 year areas to be removed
- 100 year areas to be added to FIRM

**WORK MAP**

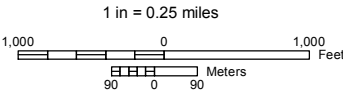


**PAGE INDEX**  
Page 5 of 9



**Boise River East**

Vicinity of Boise, Idaho  
Changes in Floodplain since last FIRM

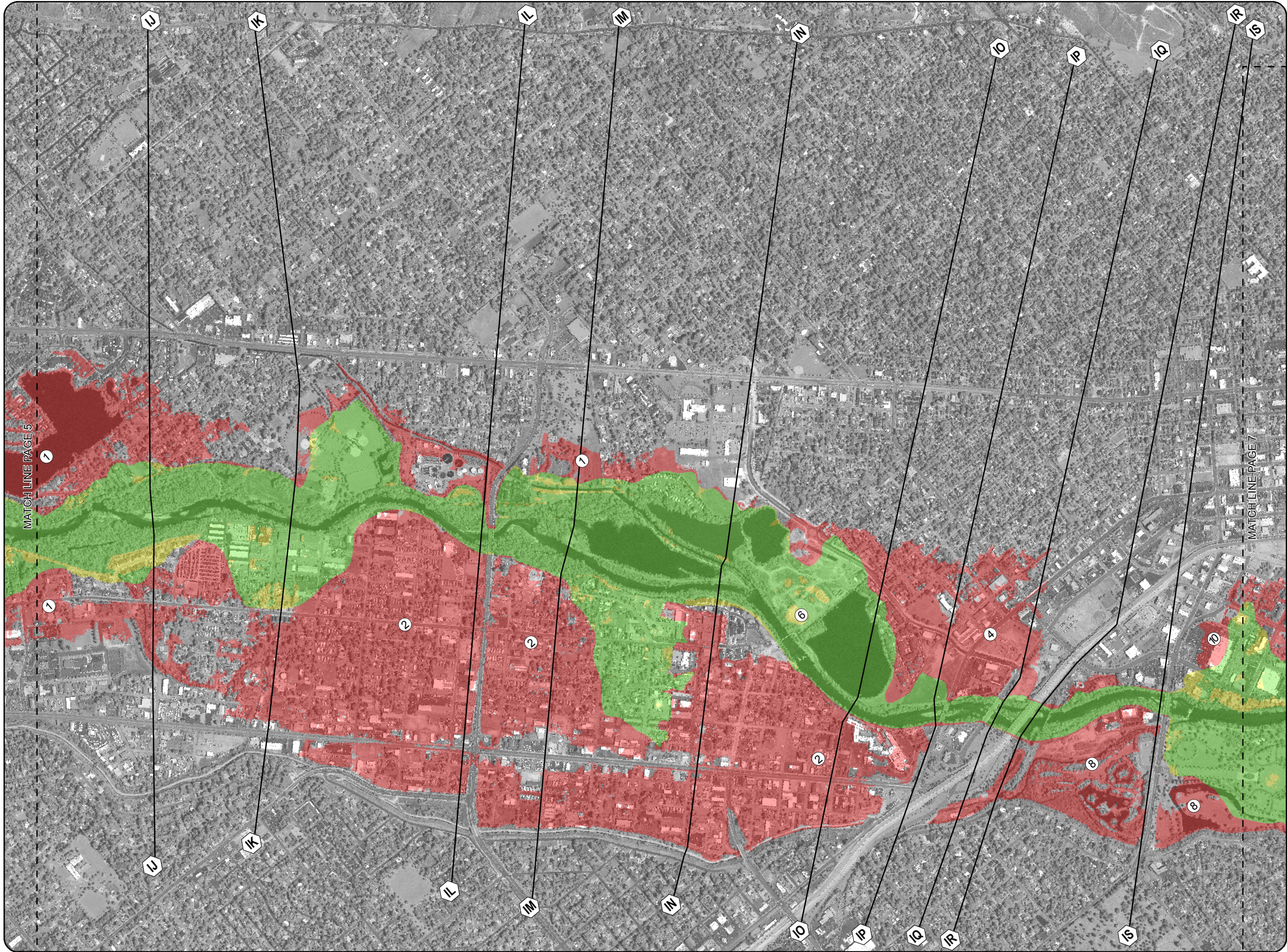


DATE	4/6/2016
DESIGNED	PETERSEN, HOBBS, SCHWARZ
DRAWN	REDAR
CHECKED	SCHWARZ



U.S. Army Corps of Engineers  
Northwest Division  
Walla Walla District





**Legend**

**A** — Cross Section

**NoteNumber**

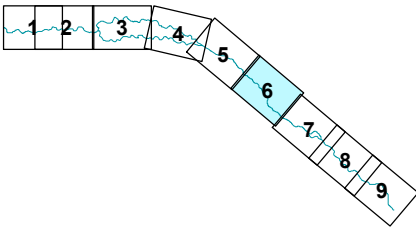
- ① New channel bathymetry and topo data resulted in better defined inundation areas
- ② Non-certified levee (not part of NLD) changed to not provide protection
- ④ Raised WSEL due to removal of floodplain flows due to development
- ⑥ Fill material reduced flood plain area
- ⑧ The change from smooth floodplains to grid
- ⑩ Average depth less than 1 foot

- No Change
- Effective FIRM 100 year areas to be removed
- 100 year areas to be added to FIRM

**WORK MAP**

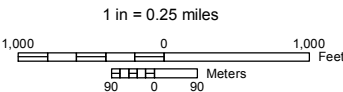


**PAGE INDEX**  
Page 6 of 9



**Boise River East**

Vicinity of Boise, Idaho  
Changes in Floodplain since last FIRM

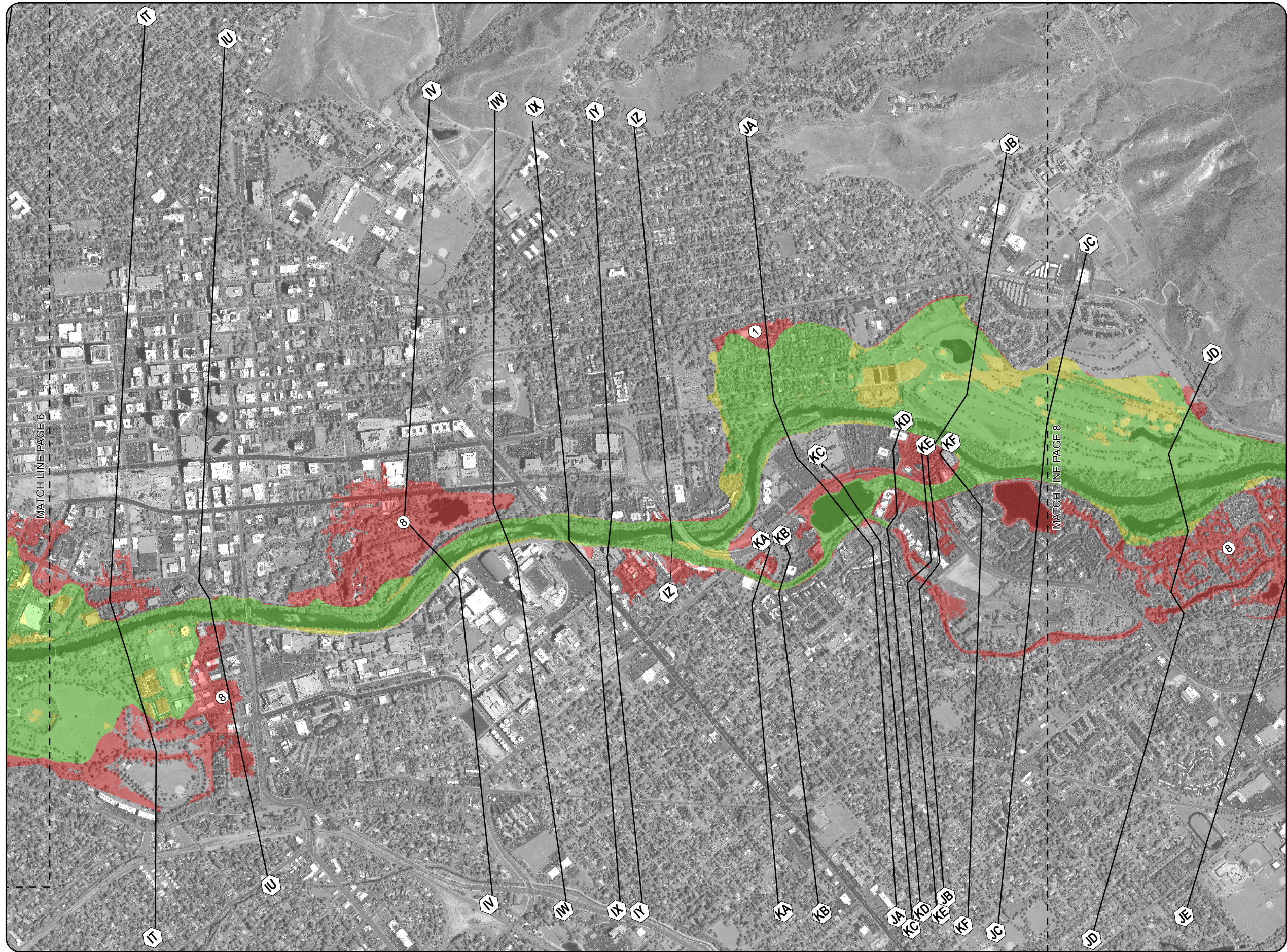


DATE	4/6/2016
DESIGNED	PETERSEN, HOBBS, SCHWARZ
DRAWN	REDAR
CHECKED	SCHWARZ



U.S. Army Corps of Engineers  
Northwest Division  
Walla Walla District





## Legend

**A** — Cross Section

### NoteNumber

**1** New channel bathymetry and topo data resulted in better defined inundation areas

**8** The change from smooth floodplains to grid

**No Change**

**Effective FIRM 100 year areas to be removed**

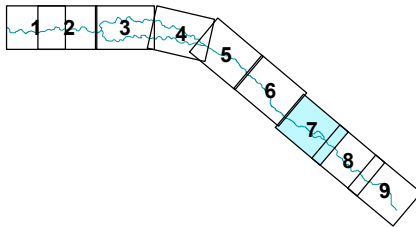
**100 year areas to be added to FIRM**

## WORK MAP



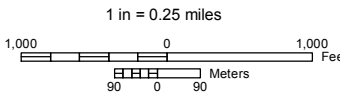
### PAGE INDEX

Page 7 of 9



## Boise River East

Vicinity of Boise, Idaho  
Changes in Floodplain since last FIRM

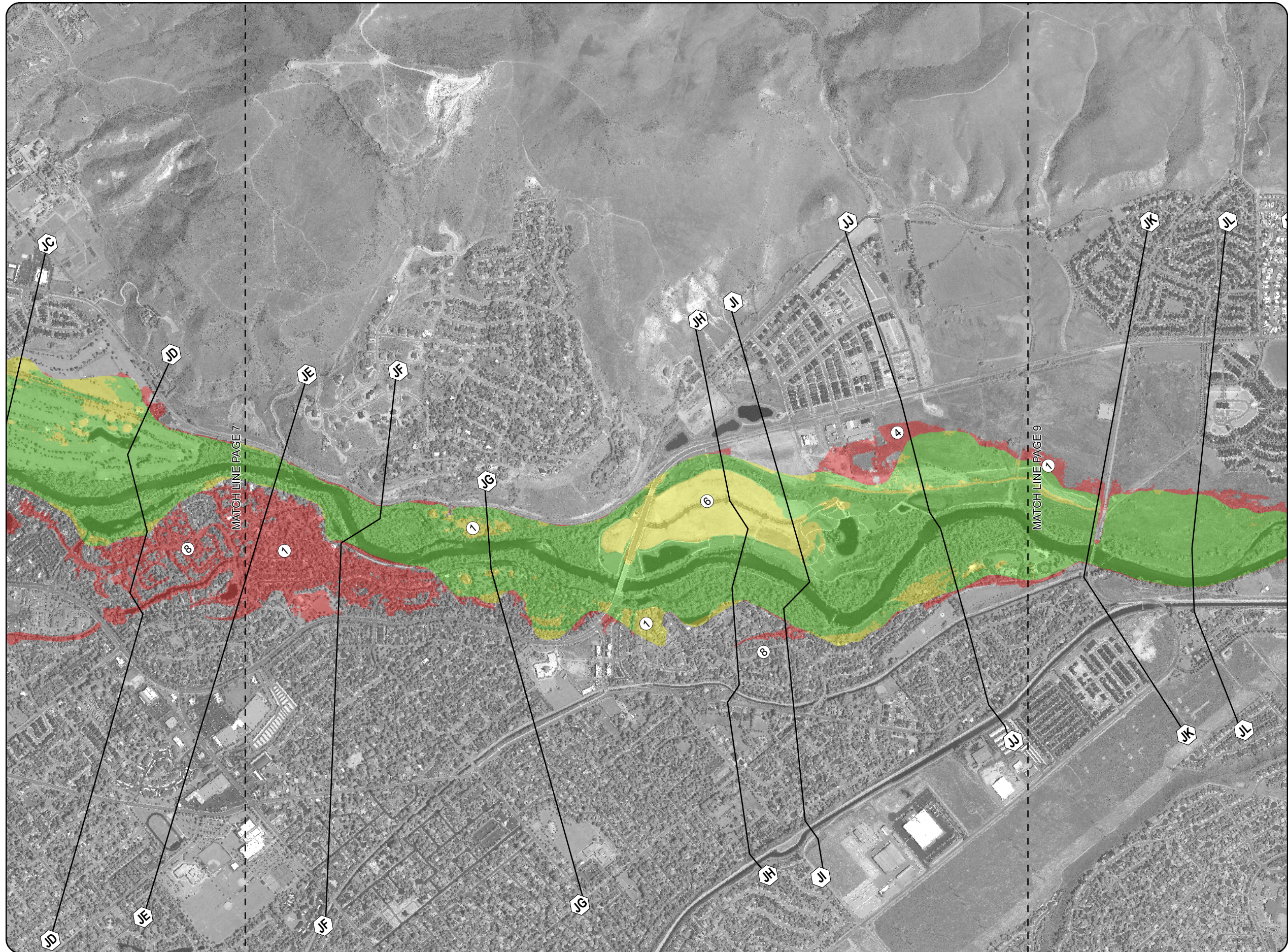


DATE	4/6/2016
DESIGNED	PETERSEN, HOBBS, SCHWARZ
DRAWN	REDAR
CHECKED	SCHWARZ



U.S. Army Corps of Engineers  
Northwest Division  
Walla Walla District





Legend

A — Cross Section

NoteNumber

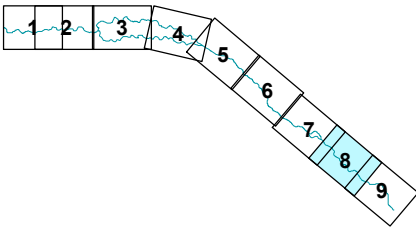
- ① New channel bathymetry and topo data resulted in better defined inundation areas
- ④ Raised WSEL due to removal of floodplain flows due to development
- ⑥ Fill material reduced flood plain area
- ⑧ The change from smooth floodplains to grid

- No Change
- Effective FIRM 100 year areas to be removed
- 100 year areas to be added to FIRM

WORK MAP

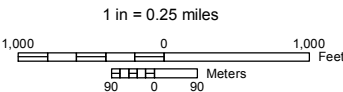


PAGE INDEX  
Page 8 of 9



Boise River East

Vicinity of Boise, Idaho  
Changes in Floodplain since last FIRM

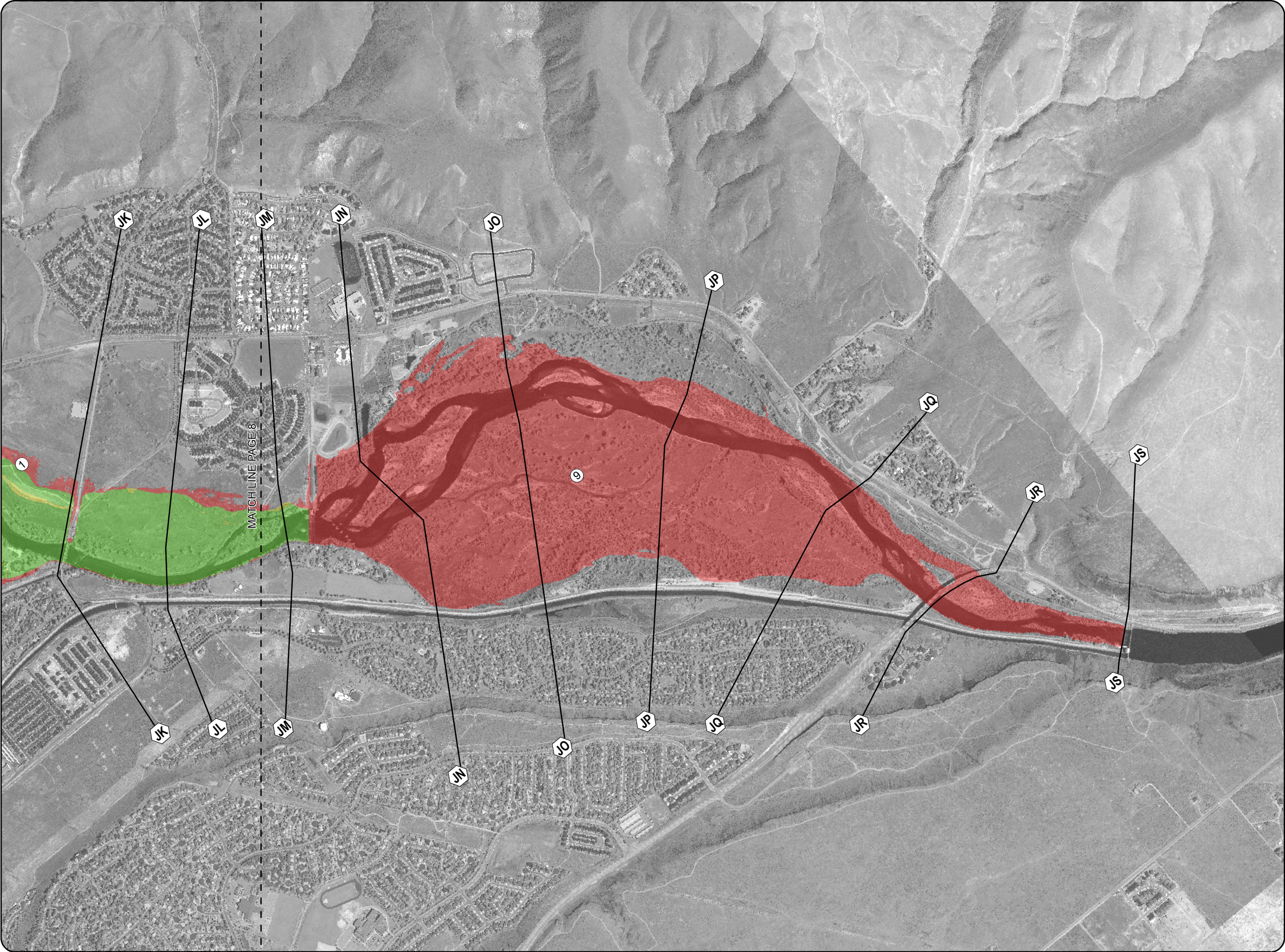


DATE	4/6/2016
DESIGNED	PETERSEN, HOBBS, SCHWARZ
DRAWN	REDAR
CHECKED	SCHWARZ



U.S. Army Corps of Engineers  
Northwest Division  
Walla Walla District





### Legend

Cross Section

**NoteNumber**

- New channel bathymetry and topo data resulted in better defined inundation areas
- New modeling and mapping area
- No Change
- Effective FIRM 100 year areas to be removed
- 100 year areas to be added to FIRM

### WORK MAP

FEMA

**PAGE INDEX**  
Page 9 of 9

### Boise River East

Vicinity of Boise, Idaho  
Changes in Floodplain since last FIRM

1 in = 0.25 miles

DATE	4/6/2016
DESIGNED	PETERSEN, HOBBS, SCHWARZ
DRAWN	REDAR
CHECKED	SCHWARZ

U.S. Army Corps of Engineers  
Northwest Division  
Walla Walla District