

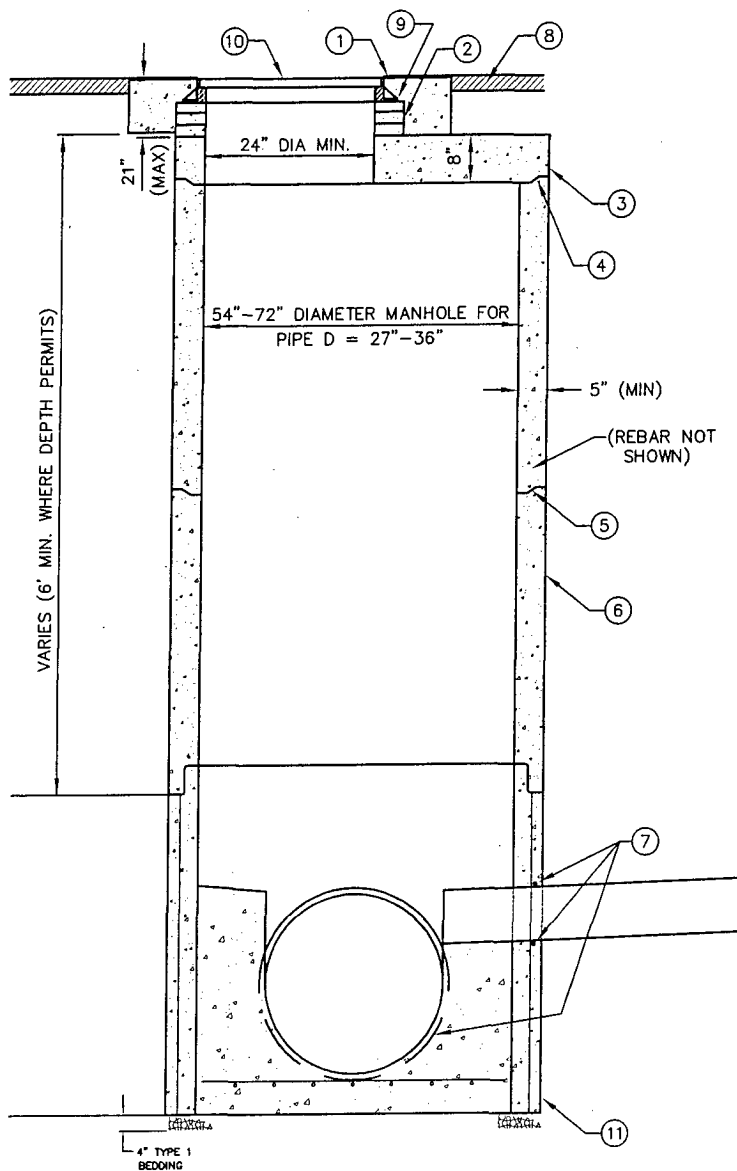
FOR 27" - 36" PIPE

LEGEND

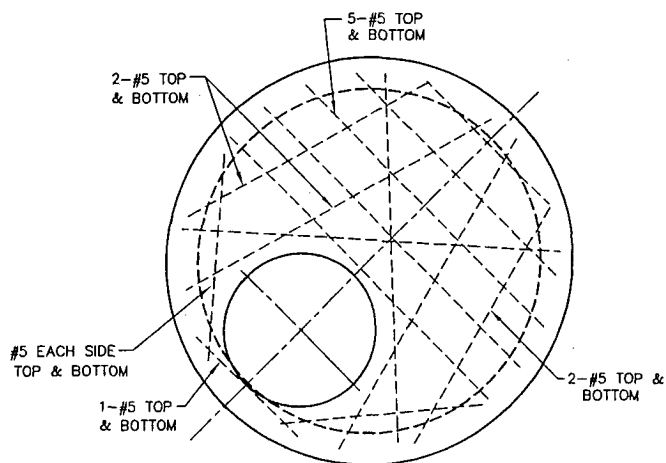
- ① CONCRETE COLLAR IN PAVED AND GRAVEL AREAS PER SD-508.
- ② GRADE RINGS GROUT WATERTIGHT IN PLACE, NOT TO EXCEED 21" FROM FINISHED SURFACE TO TOP OF CONE.
- ③ REINFORCED CONCRETE REDUCER SLAB.
- ④ RAMNEK OR APPROVED GASKET AT ALL JOINTS.
- ⑤ PROPERLY ALIGN ALL INTERIOR JOINTS.
- ⑥ PRECAST CONCRETE MANHOLE BARREL SECTION (REBAR NOT SHOWN), 54"-72" RCP.
- ⑦ PRECAST GASKETED HUB RING OR RUBBER GASKETED COLLAR-FLEXIBLE AND WATER TIGHT.
- ⑧ REPLACEMENT SURFACING TO MATCH FLUSH WITH EXISTING SURFACING (AC SHOWN).
- ⑨ FRAME TO BE GROUTED TO GRADE RINGS.
- ⑩ FRAME AND COVER PER SD-507 OR SD-507A.
- ⑪ PRECAST MANHOLE BASE. SEE SD-502A.

NOTES:

- A CAST-IN-PLACE MANHOLE BASE MAY ONLY BE USED PER OWNER'S APPROVAL. SEE SD-502B.
- B PLACE VERTICAL WALL ON UPSTREAM SIDE OF MANHOLE, ROTATED 45 DEGREES.
- C FOR EXTRA DEPTH MANHOLE, SEE SD-503 "STANDARD MANHOLE TYPE B, DEEP".
- D MANHOLE FRAME AND COVER:
 - A. REFER TO DRAWING NO. SD-507 (24" OPENING) OR SD-508 (30" OPENING).
 - B. FRAME AND COVER SHALL BE FLUSH WITH SLOPE OF PAVEMENT.
- E WHERE PVC IS PIPE UTILIZED, INSTALL A RUBBER RING OR GASKET COLLAR WHERE THE PIPE IS IN CONTACT WITH MANHOLE BASE AND/OR MANHOLE CHANNEL, IN ORDER TO INSURE A WATERTIGHT SEAL.
- F PROVIDE MANHOLE CONCRETE REINFORCING TO ACCOMMODATE TRAFFIC LOADINGS.



PRECAST MANHOLE BASE
N.T.S.



STANDARD SLAB TOP DETAILS
N.T.S.

IDAHO STANDARDS
FOR PUBLIC WORKS
CONSTRUCTION

STANDARD MANHOLE
TYPE B

STANDARD DRAWING
NO. SD-502

BOISE CITY REVISIONS - MAY 2010

STDDWGS/SD-502-REV-2010(May)