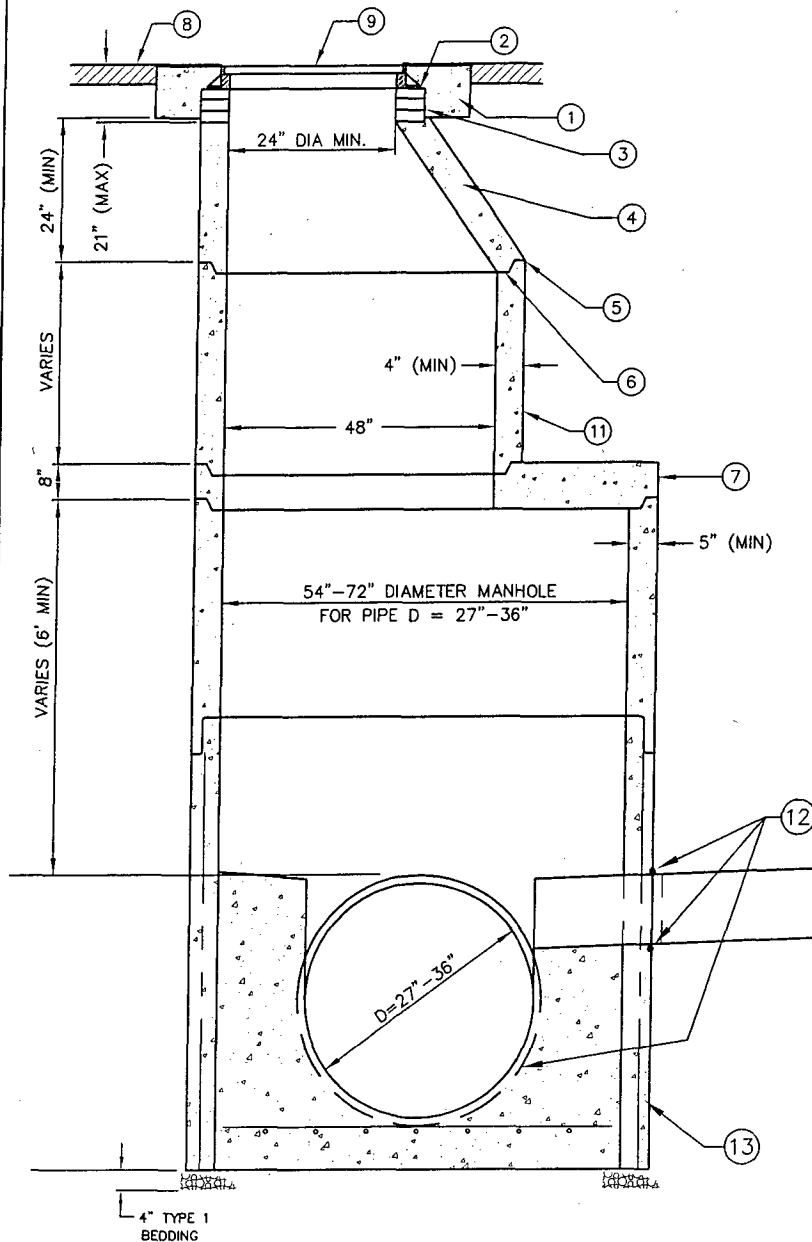


FOR 27" THRU 36" PIPE



PRECAST MANHOLE BASE
N.T.S.

LEGEND

- ① CONCRETE COLLAR IN PAVED AND GRAVEL STREET SECTIONS PER SD-508.
- ② FRAME TO BE GROUTED TO GRADE RINGS, NOT TO EXCEED 21" FROM FINISHED SURFACE TO TOP OF CONE.
- ③ GRADE RINGS GROUT WATER TIGHT IN PLACE.
- ④ PRECAST MONOLITHIC ECCENTRIC CONE.
- ⑤ RAMNEK OR APPROVED GASKETS ALL JOINTS.
- ⑥ PROPERLY ALIGN ALL INTERIOR JOINTS.
- ⑦ REINFORCED CONCRETE REDUCER SLAB AS APPROVED BY THE ENGINEER.
- ⑧ REPLACEMENT SURFACING TO MATCH FLUSH WITH EXISTING SURFACING (AS SHOWN).
- ⑨ FRAME AND COVER PER SD-507 OR SD-507A.
- ⑩ 54" RCP THRU 72" RCP PIPE.
- ⑪ 48" DIAMETER BARREL SECTION.
- ⑫ PREGASKETED HUB RING OR RUBBER GASKETED COLLAR - FLEXIBLE AND WATER TIGHT.
- ⑬ PRECAST MANHOLE BASE. SEE SD-502A.

NOTES:

- (A) CAST-IN-PLACE MANHOLE MAY ONLY BE USED PER OWNER'S APPROVAL. SEE SD-502B.
- (B) PLACE VERTICAL WALL ON UPSTREAM SIDE OF MANHOLE, ROTATED 45 DEGREES.
- (C) MANHOLE FRAME AND COVER:
 - A. REFER TO DRAWING NO. SD-507 (24" OPENING) OR SD-508 (30" OPENING).
 - B. FRAME AND COVER SHALL BE FLUSH WITH SLOPE OF PAVEMENT.
- (D) WHERE PVC PIPE IS UTILIZED, A RUBBER RING OR GASKET COLLAR IS TO BE INSTALLED WHERE THE PIPE IS IN CONTACT WITH MANHOLE BASE AND/OR MANHOLE CHANNEL, IN ORDER TO INSURE A WATERTIGHT SEAL.
- (E) PROVIDE MANHOLE CONCRETE REINFORCING TO ACCOMMODATE TRAFFIC LOADINGS.
- (F) PIPE MAIN CANNOT BE INSTALLED CONTINUOUSLY THROUGH BASE.

IDAHO STANDARDS
FOR PUBLIC WORKS
CONSTRUCTION

**STANDARD MANHOLE
TYPE B - DEEP**

STANDARD DRAWING
NO. **SD-503**

BOISE CITY REVISIONS - MAY 2010.
STDDWGS/SD-503-REV-2010(May)