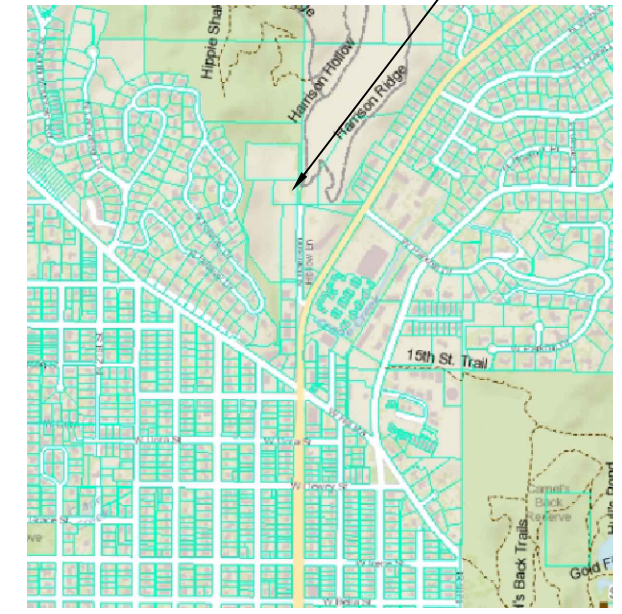


FEATURES


- (23) STANDARD PARKING STALLS 9'X18' MIN
- (1) ACCESSIBLE CONCRETE PARKING STALL
- 2 STALL FLUSH RESTROOM WITH CONCRETE ACCESSIBLE ROUTE
- 24' WIDE TWO WAY TRAFFIC LANES
- 5' PROPERTY LINE SETBACKS
- APPROXIMATELY .60 ACRE DISTURBED AREA
- 5 NEW NATIVE TREES

PROJECT LOCATION




Date	Review

HARRISON HOLLOW PARKING


CONCEPT 1
 NOT TO SCALE

CONCEPT 1

Surveyed By:	Checked By:
Drawn By: <i>us</i>	Date: SEPT 2018
Scale:	Job No.:

 NORTH
 Sheet
1