

NORTH END *Neighborhood* PLAN



IN PARTNERSHIP WITH





NEIGHBORHOOD VISIONING WORKSHOP (Workshop #1)

JANUARY 14, 2020

NORTH JUNIOR HIGH CAFETERIA

WELCOME

- **Deanna Dupuy**
 - City of Boise Planning and Development Services
 - Project Manager
- **Ellen Campfield Nelson, AICP**
 - Agnew::Beck Consulting
 - Facilitator
- Planning Team and Volunteers
- “Agency Alley”
- All of You!



WHAT IS A NEIGHBORHOOD PLAN?



- Long-term vision document with vision, goals, and implementation strategies
- Partnership between the City and Neighborhood
- Adopted by City Council to supplement the City's comprehensive plan, *Blueprint Boise*
- www.cityofboise.org

WHAT IS THE PURPOSE OF NEIGHBORHOOD PLAN?



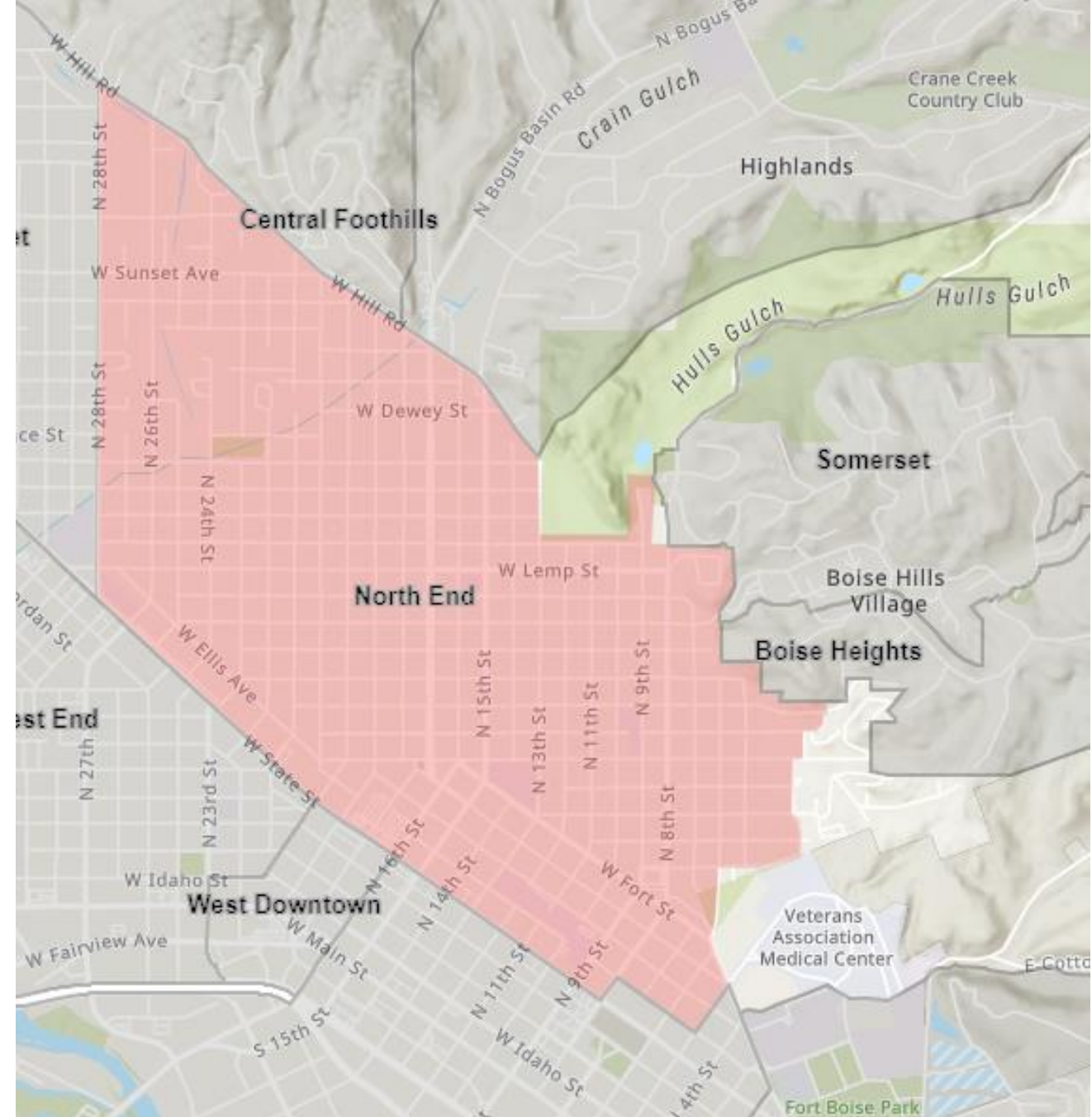
- Engage the neighborhood in a dialogue about the future
- Inform how the Neighborhood should evolve for the benefit of the community
- Addresses the diverse needs and concerns of the neighborhood
- Identify and develop a project list to implement
- Inform decision-making



Step 1: Understand & Create NEIGHBORHOOD VISION

Hear from as many North Enders as possible about what they love today, what they would like to see in the future...

WELCOME TO THE NORTH END!



WELCOME TO THE NORTH END!





WELCOME TO THE NORTH END!



PROCESS



PROCESS



INPUT on the VISION: WORKSHOP

Workshop Passport

We encourage everyone to interact with each of the workshop stations and keep track on this sheet by checking off the box for each station. Remember to turn in your finished passport at the Welcome Station to be entered into the raffle and a chance to win a Boise Co-Op gift card!

<input type="checkbox"/> PLANNING PROCESS	<input type="checkbox"/> NEIGHBORHOOD DATA
<input type="checkbox"/> VISION	<input type="checkbox"/> PARTNER BOOTHS

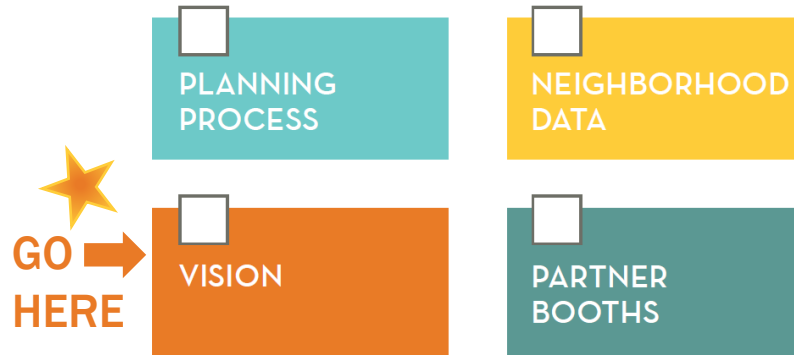
ALSO:

- Survey station
- “Agency Alley”
- Kids activities
- Refreshments
- Welcome area

INPUT on the VISION: WORKSHOP

Workshop Passport

We encourage everyone to interact with each of the workshop stations and keep track on this sheet by checking off the box for each station. Remember to turn in your finished passport at the Welcome Station to be entered into the raffle and a chance to win a Boise Co-Op gift card!



ALSO:

- Survey station
- “Agency Alley”
- Kids activities
- Refreshments
- Welcome area

INPUT on the VISION: WORKSHOP

Workshop Passport

We encourage everyone to interact with each of the workshop stations and keep track on this sheet by checking off the box for each station. Remember to turn in your finished passport at the Welcome Station to be entered into the raffle and a chance to win a Boise Co-Op gift card!

☐
PLANNING
PROCESS

☐
NEIGHBORHOOD
DATA

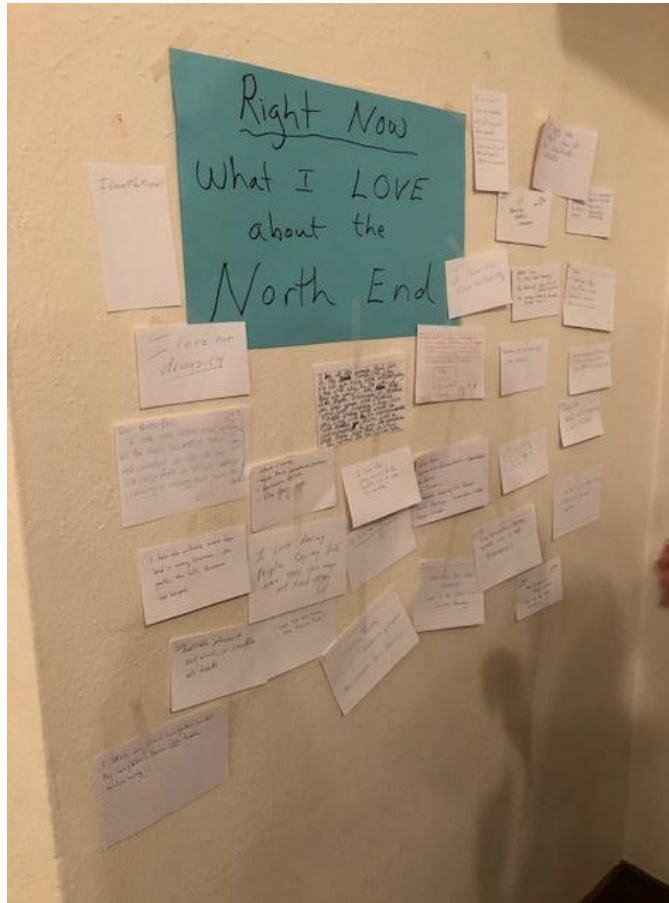
☐
VISION

☐
PARTNER
BOOTHs

★
GO →
HERE

ALSO:

- Survey station
- Kids activities
- Refreshments
- Welcome area



 **Use your sticky notes to let us know:
WHAT'S YOUR VISION FOR THE
NEIGHBORHOOD?**

CONSIDER: A neighborhood vision statement is a concise statement that addresses our hopes for the process, a problem we are solving, and what we want to achieve. The vision statement for the North End Plan will serve as the foundation for this process and will guide our planning efforts.

**What do you like or dislike about each vision statement?
Are there any specific words or phrases that resonate with you?**

EXAMPLE VISION STATEMENT 1:

"The North End Neighborhood is a socially and economically diverse neighborhood that provides varied, well-maintained housing with excellent access to shopping, public services, parks, schools and other amenities sought after by individuals and families alike. Serving as a place that people not only travel to, but through and around, the walkability, bikability, and livability of our streets and alleys allows our neighborhood to thrive as a special place to live."

—Modified from the 1981 North End Plan

EXAMPLE VISION STATEMENT 2:


"The North End of Boise embodies all the charm of a storybook community. Front porches, alleys, historic architecture, dogs, bicycles, huge old trees, restaurants and shops, schools and churches, parks and hills. It is a safe haven not only for the diverse and creative residents who live here but the businesses and people who visit from all over the world as a destination point. Respectfully and mindfully keeping these place-making characteristics alive as Boise evolves will continue to define this uniquely special neighborhood. The people care deeply about this neighborhood and will intentionally influence the area by reflecting the past, embracing the present and protecting the future."


—Draft by North End Community Member


WELCOME TO THE NORTH END!

Data highlights:

- Lots of trees, sidewalks and parks
- More older adults
- Smaller household sizes
- Even split of renters and homeowners
- A more educated population (bachelors degree or higher)
- Income on average is lower, but household value is much higher
- Large share of small-scale multi-family housing (10 units or less)

		North End	City
	Population	10,220	4.4% of City
	2010-2019 Population Change	4%	13%
	Median Income	\$52,321	\$55,029

	Housing Units	5,655	5.3% of City
	Owner Occupancy	48%	56%
	Renter Occupancy	44%	36%
	Vacant Land	1%	21%

	Drive Alone Trips	73%	80%
	Sidewalk Coverage	80%	70%

INPUT on the VISION: SURVEY

North End Neighborhood Plan Survey: Vision

1. What words or ideas would you use to describe the neighborhood...

In the past (historic)

In the present

In the future (your vision)

2. What do you like most about living in the North End Neighborhood? (list up to three things)

1.

2.

3.

North End Neighborhood Plan Survey: Vision

3. What do you feel are the most pressing challenges or opportunities in the North End Neighborhood? (list up to three challenges or opportunities)

1.

2.

3.

4. What is your one "big idea" for the North End Neighborhood?

Survey will remain open through January 27.
Remember to tell your friends (kids included)!
Responses to date: 326

HOW YOUR IDEAS WILL HELP CREATE THE PLAN...



NORTH END *Neighborhood* PLAN

**COMMENTS?
QUESTIONS?**

NORTH END
Neighborhood
PLAN

**COMMENTS?
QUESTIONS?**

NEXT...

“SOAR” BREAKOUT EXERCISE

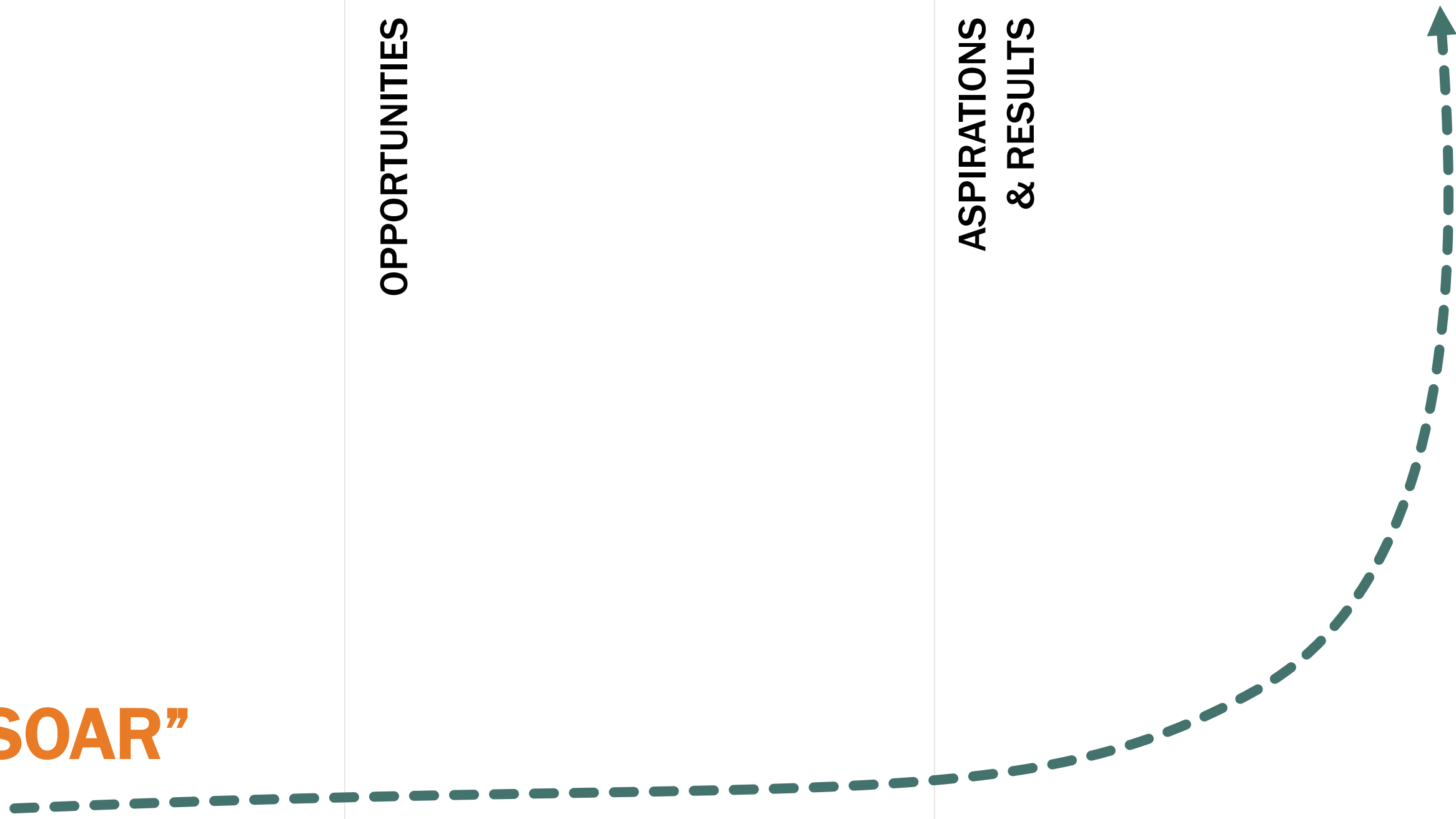


STRENGTHS

OPPORTUNITIES

ASPIRATIONS
& RESULTS

“SOAR”



STRENGTHS

- What are the North End Neighborhood's greatest **STRENGTHS**?

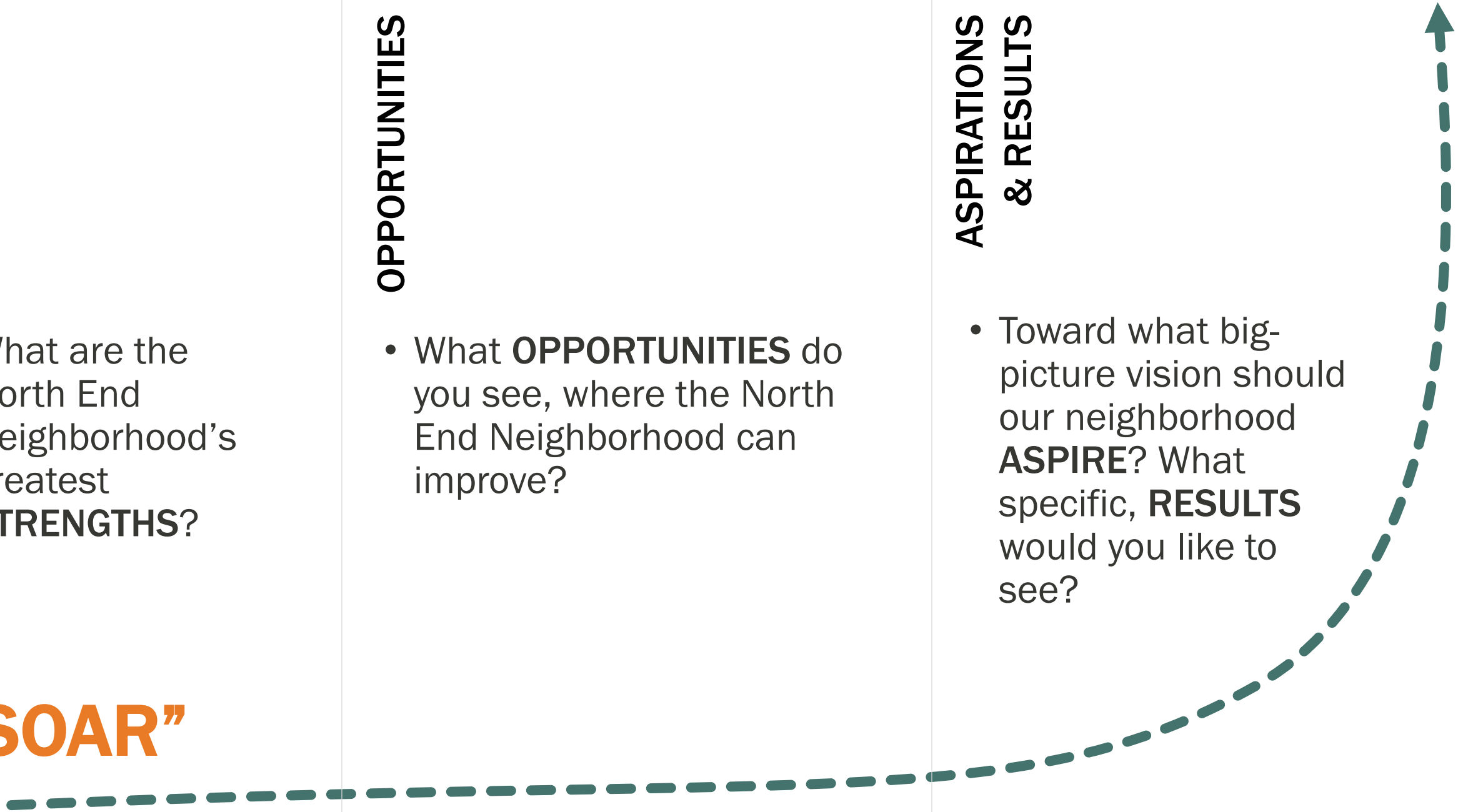
OPPORTUNITIES

- What **OPPORTUNITIES** do you see, where the North End Neighborhood can improve?

ASPIRATIONS & RESULTS

- Toward what big-picture vision should our neighborhood **ASPIRE**? What specific, **RESULTS** would you like to see?

“SOAR”



STRENGTHS

5!

- What are the North End Neighborhood's greatest **STRENGTHS**?

OPPORTUNITIES

5!

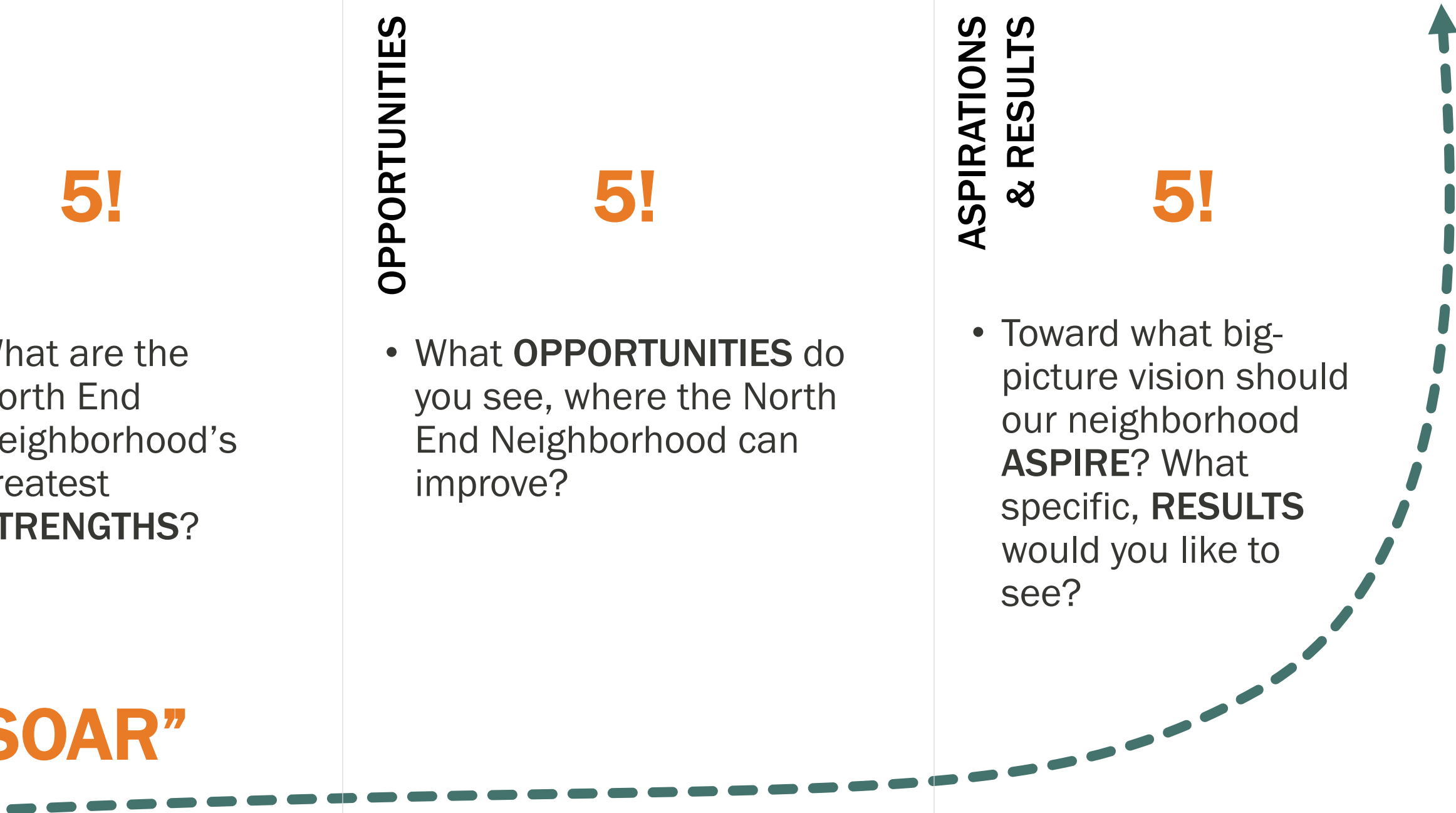
- What **OPPORTUNITIES** do you see, where the North End Neighborhood can improve?

ASPIRATIONS & RESULTS

5!

- Toward what big-picture vision should our neighborhood **ASPIRE**? What specific, **RESULTS** would you like to see?

“SOAR”



WRAP-UP

- **Thank you** for your time, ideas and contributions.
- Thank you again to our volunteers and participating agencies.
- Reminder: take the survey and provide input on our mapping exercise at www.cityofboise.org/northendplan
- Turn in your completed **Workshop Passport** at the Welcome Table to enter into our raffle for a Boise Co-Op gift card.
- **Questions?** Contact Deanna Dupuy at ddupuy@cityofboise.org
- Spread the news about this process!



Thank You!

