

PLANNING PROCESS

Why are we here?

We are here to receive feedback on the second phase of the **NORTH END NEIGHBORHOOD PLAN**. Your input today will help identify housing, transportation, environment, and community projects to be included in the plan.

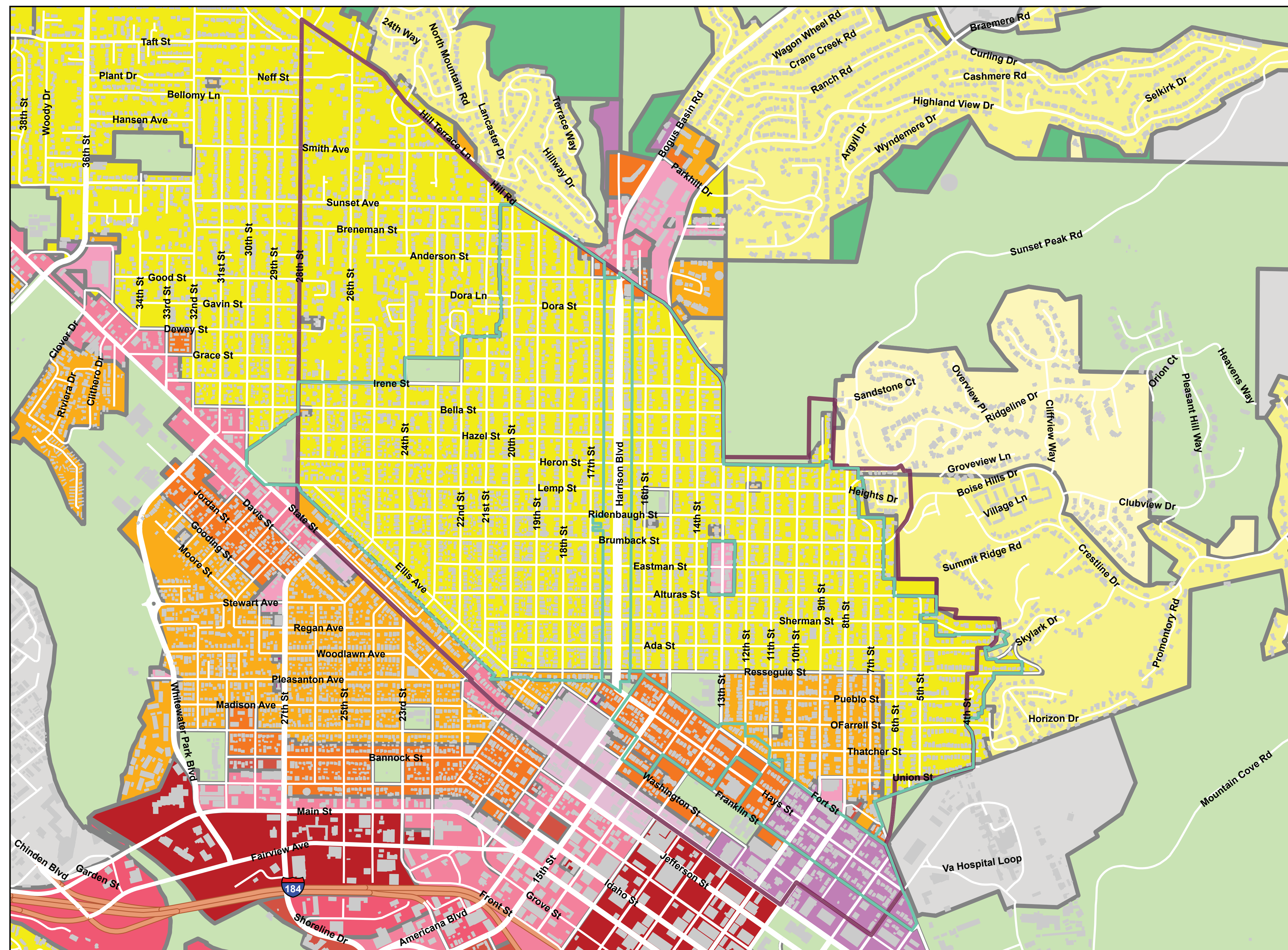


NPC Neighborhood Planning Committee

Visit the cityofboise.org/northendplan to read a summary of previous outreach and existing conditions research.

Goal: HOUSING

Preserve the historic character of North End homes while balancing the need for diverse and affordable housing options.



Legend

North End Neighborhood Association

Buildings

Historic District

Boise Zoning

A-1: Open Lands, Parks

A-2: Open Land, Reserve

R-1A: Single Family Residential, Large Lot

R-1B: Single Family Residential, Suburban

R-1C: Single Family Residential, Urban

R-1M, Town Lot Residential

R-2: Medium Density Residential

R-3: Multi-Family Residential

C-1: Neighborhood Commercial

C-2: General Commercial

C-3: Service Commercial

C-4: Planned Commercial

C-5: Central Business

PC: Pedestrian Commercial

N-O: Neighborhood Office

L-O: Limited Office

R-O: Residential Office

M-1: Light Industrial

M-2: Heavy Industrial

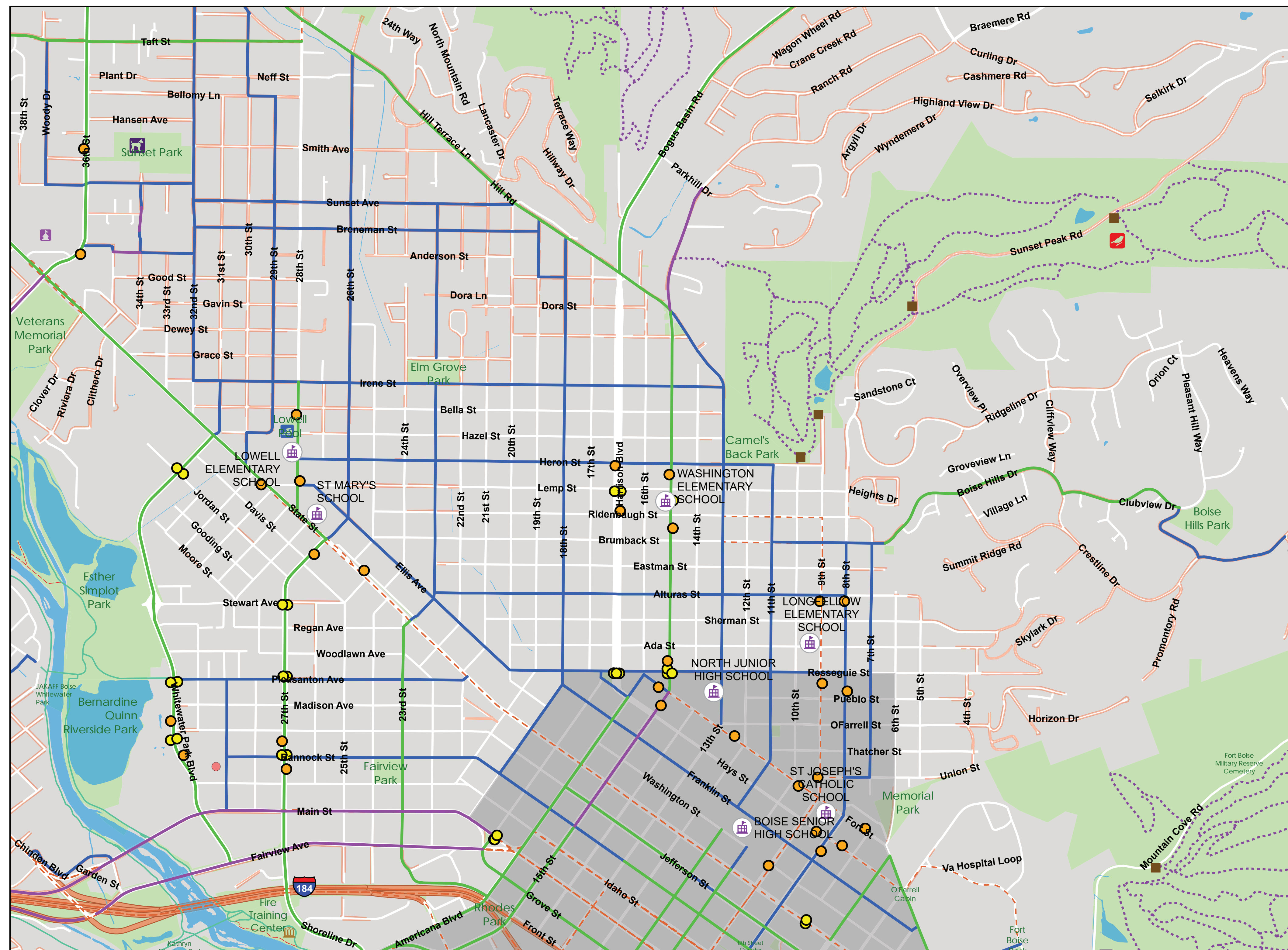
H-S: Health Services District

0 0.3 0.5 Miles



Goal: MOBILITY

Provide safe, convenient and pleasant walking, bicycling, and transit options.



Legend

Schools

Residential Parking Districts

Valley Ride Bus Routes

ACHD Missing Sidewalks

ACHD Roadways To Bikeways Master Plan

Level 1 (Sharrows; Shared Streets)

Level 2 (Bike Lanes)

Level 3 (Protected Bike Lanes, Paths)

Controlled Pedestrian Crossing

School Zone Flasher

0 0.3 0.5 Miles



What does housing choice look like?

RENTALS

“MISSING
MIDDLE”

ENTRY
LEVEL

“STEP UP”

HIGH END



MID-RISE APARTMENTS



SMALL COURTYARD APARTMENTS



LIVE WORK COMPLEXES



MULTIPLEX



DUPLEX



COTTAGES



TOWNHOUSES



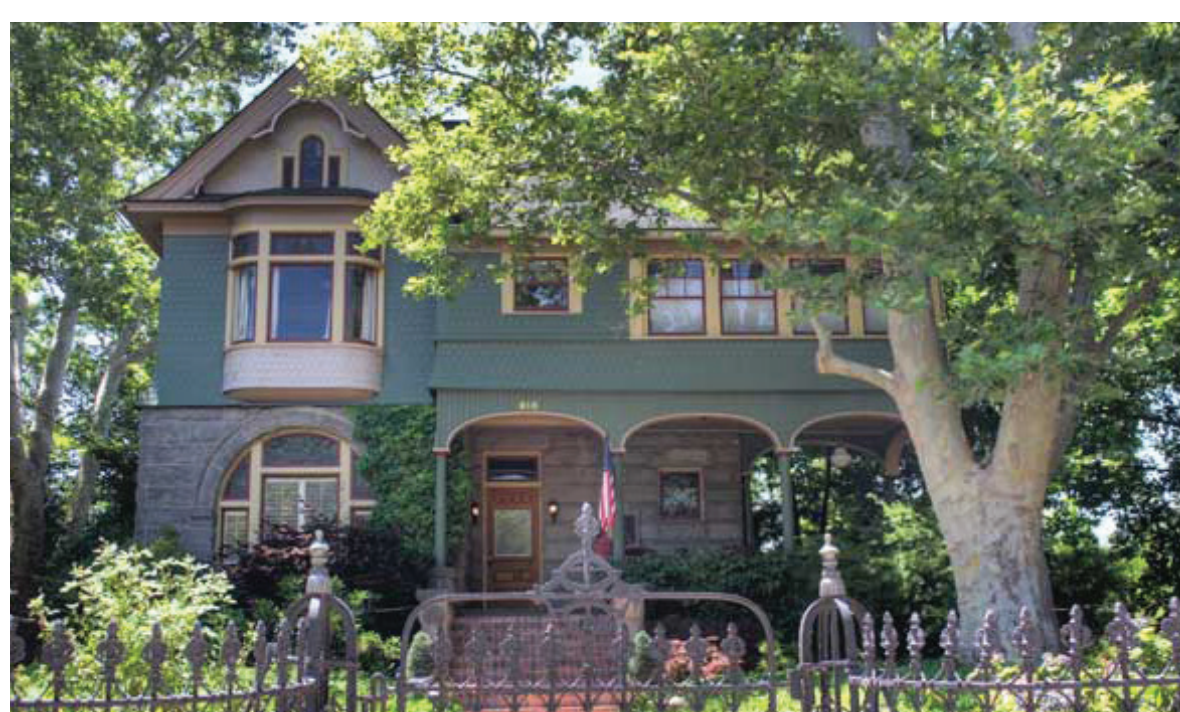
ASSESSORY DWELLING UNIT (ADU)



SMALL-SCALE SINGLE FAMILY HOME



LARGE SINGLE FAMILY HOME



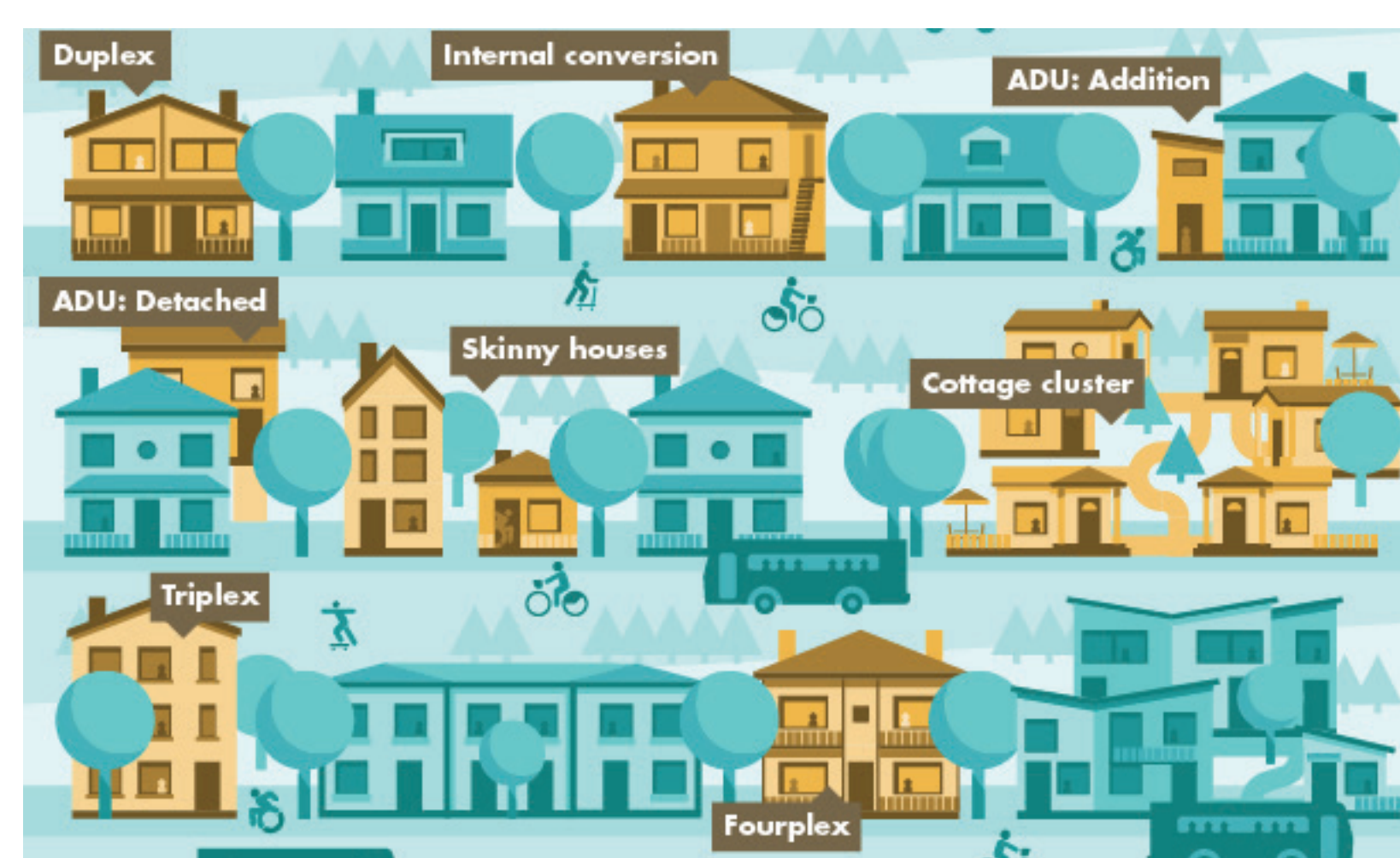
HISTORIC HOME



HIGH END HOME WITH GARAGE ADU

The Missing Middle

“Missing Middle” housing options include duplexes, fourplexes, and bungalow courts that fit seamlessly into a low-rise, walkable neighborhood. Such options support walkability, locally-serving retail, and public transportation. These housing options also provide solutions along a spectrum of affordability to address the mismatch between the available U.S. housing stock and shifting demographics combined with the growing demand for walkability.



Calmer traffic, more mobility

Options for engineering roads that are safer, and more pedestrian and bike friendly



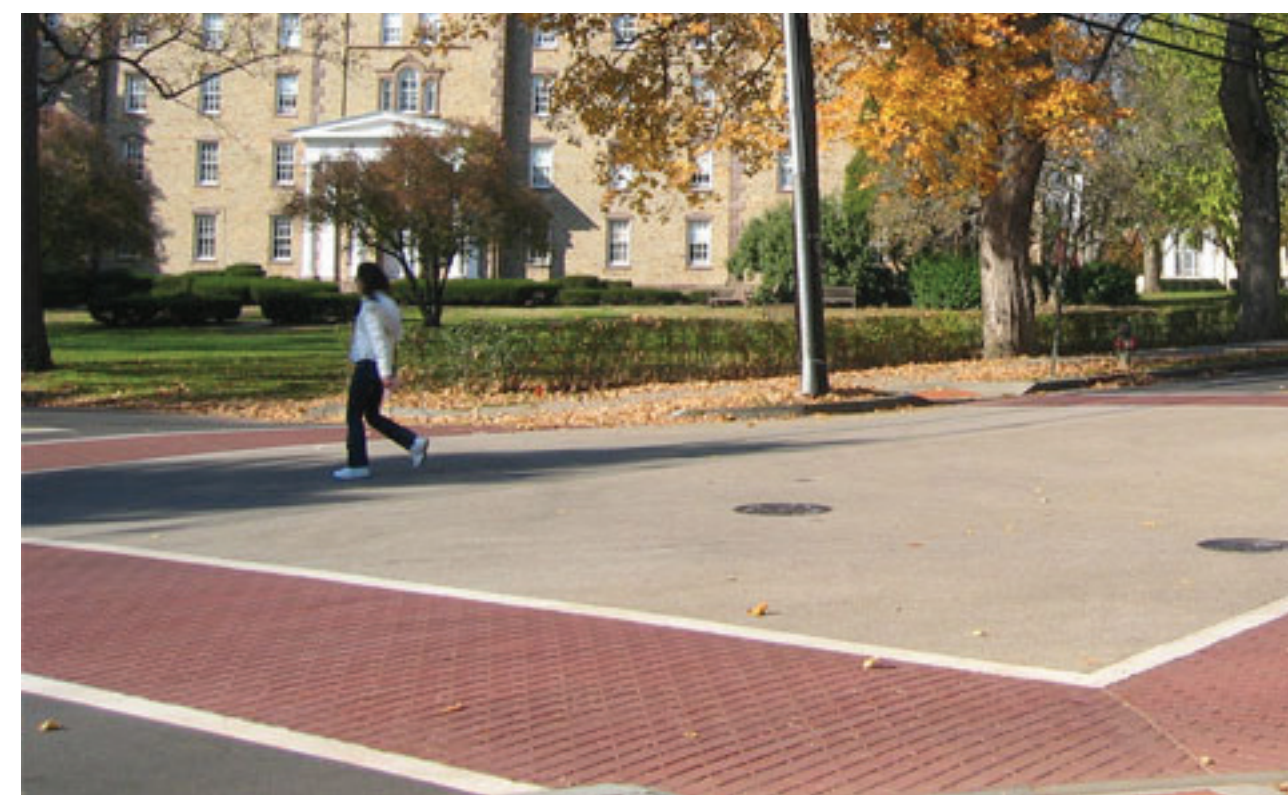
BULB OUTS visually and physically narrow the roadway, creating safer and shorter crossings for pedestrians.



MEDIAN REFUGE ISLANDS are protected spaces placed in the center of the street to facilitate bicycle and pedestrian crossings.



ART CROSSWALKS make streets more inviting and remind motorists to respect crosswalks.



RAISED INTERSECTIONS encourage motorists to yield to pedestrians at the crosswalk.



CHICANES OR OFFSET CURB EXTENSIONS create a narrowing effect that slows traffic speeds.



BUFFERED BIKE LANES give more distance between bikes and cars.



TRAFFIC DIVERTERS improve bicycle boulevards by discouraging cut-through traffic.



MINI TRAFFIC CIRCLES lower speeds at minor/uncontrolled intersection crossings.

VISION ZERO

Vision Zero is a strategy adopted by cities all around the world to eliminate all traffic fatalities and severe injuries, while increasing safe, healthy, and equitable mobility for all. It begins with the idea that we can and should achieve zero traffic deaths through designing and managing roads to prevent fatalities and injury from crashes, rather than focusing solely on moving vehicles.

TRADITIONAL APPROACH

Traffic deaths are **INEVITABLE**
PERFECT human behavior
Prevent **COLLISIONS**
INDIVIDUAL responsibility
Saving lives is **EXPENSIVE**

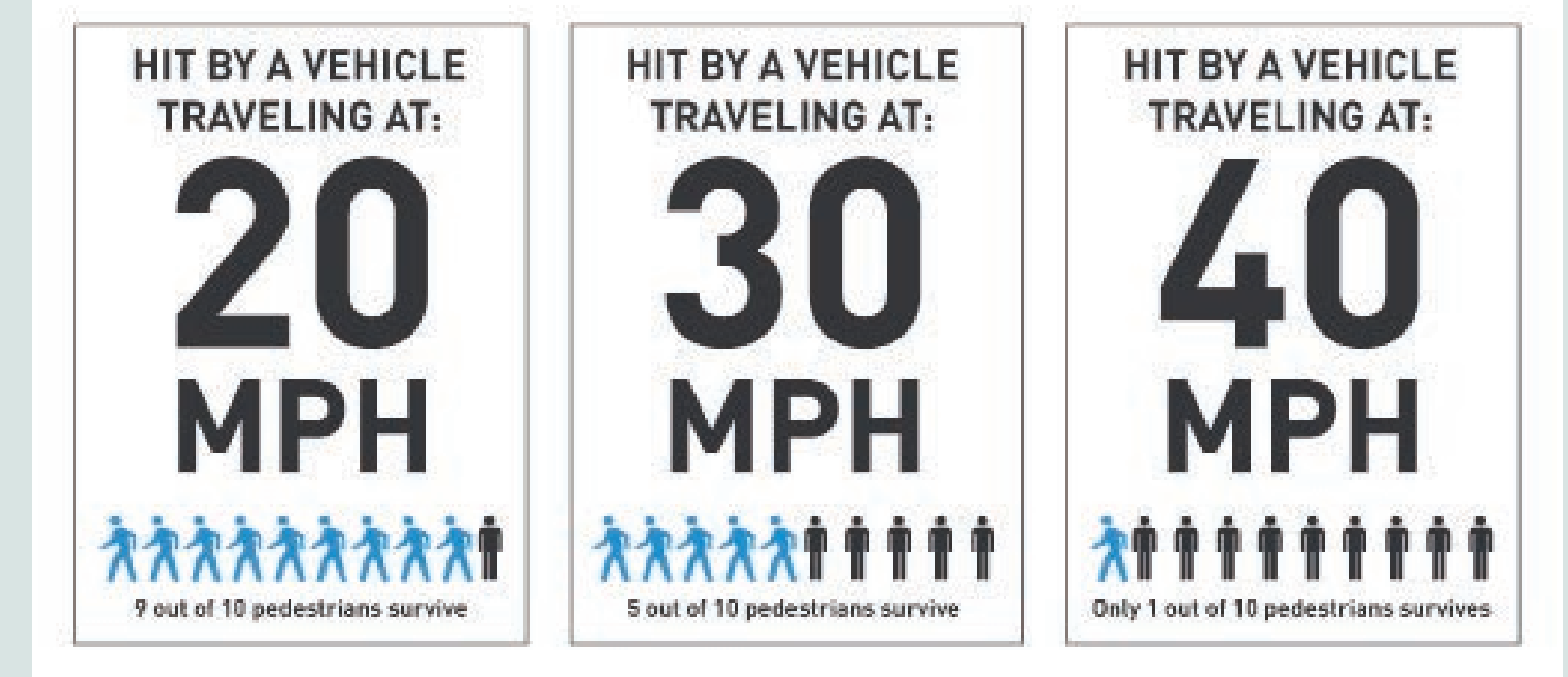
VS

VISION ZERO

Traffic deaths are **PREVENTABLE**
Integrate **HUMAN FAILING** in approach
Prevent **FATAL AND SEVERE CRASHES**
SYSTEMS approach
Saving lives is **NOT EXPENSIVE**

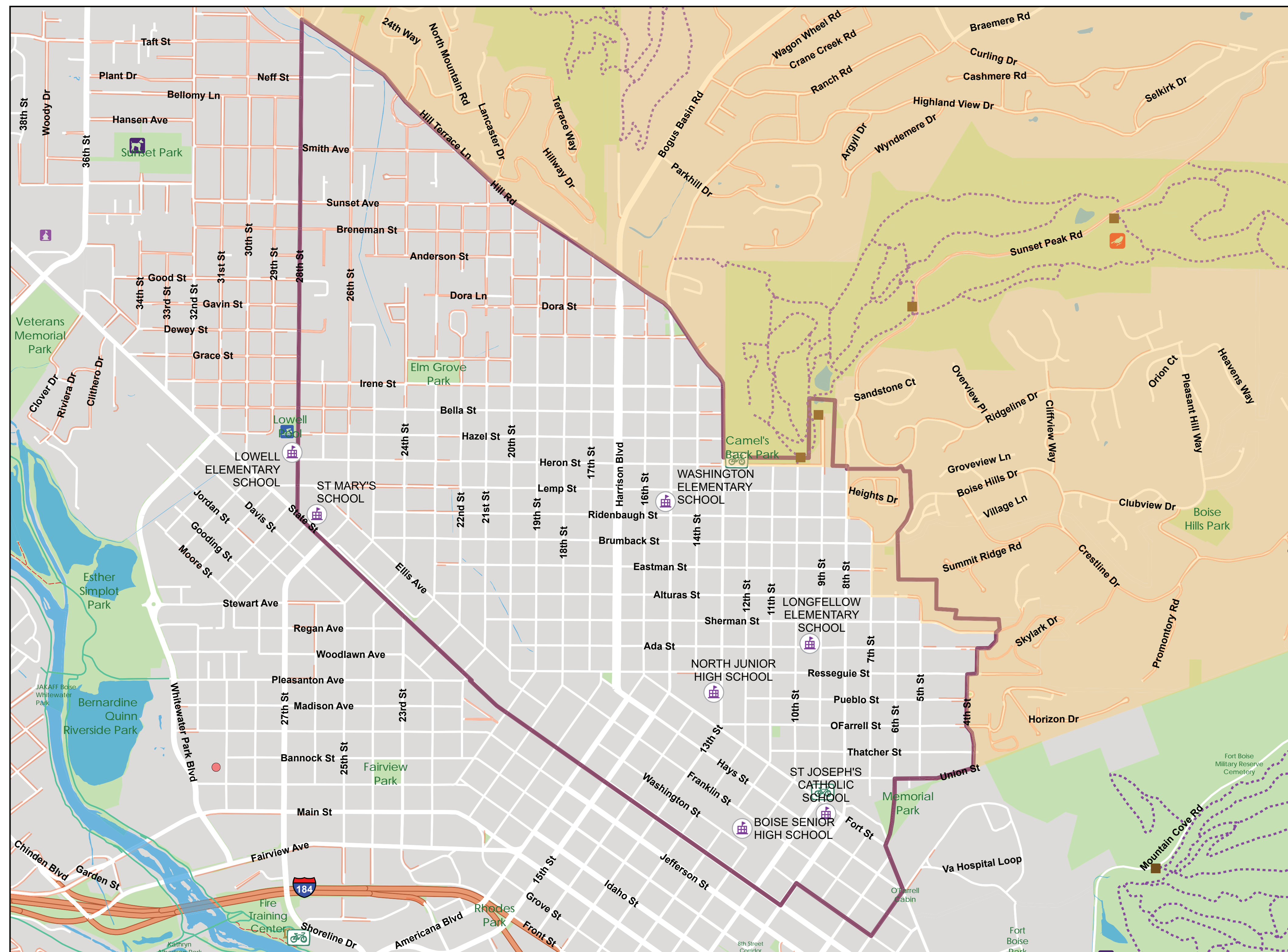
STRATEGIES

1. **ENGINEERING** - redesign and retrofit roads to calm traffic and improve mobility for everyone
2. **ENFORCEMENT** - lower speed limits and equitably implement automated enforcement
3. **EDUCATION** - educate and motivate drivers to travel responsibly.



Goals: NATURAL SPACES & SUSTAINABLE SYSTEM

- Conserve, enhance and protect experiences with nature at every scale.
- Promote infrastructure systems that are forward-thinking and focused on sustainable living and climate resilience.



Legend

- Bike Repair Stations
- Greenbelt
- Natural Greenbelt Path
- Ridge to Rivers Trails
- Nature Center
- Swimming Pool
- Trailhead
- Schools
- ACHD Missing Sidewalks
- Wildland Urban Interface
- Foothills

0 0.3 0.5 Miles



How can we enhance natural spaces and sustainable systems?



NEIGHBORHOOD MICROGRID



SCHOOL SOLAR PANELS



EV CHARGERS



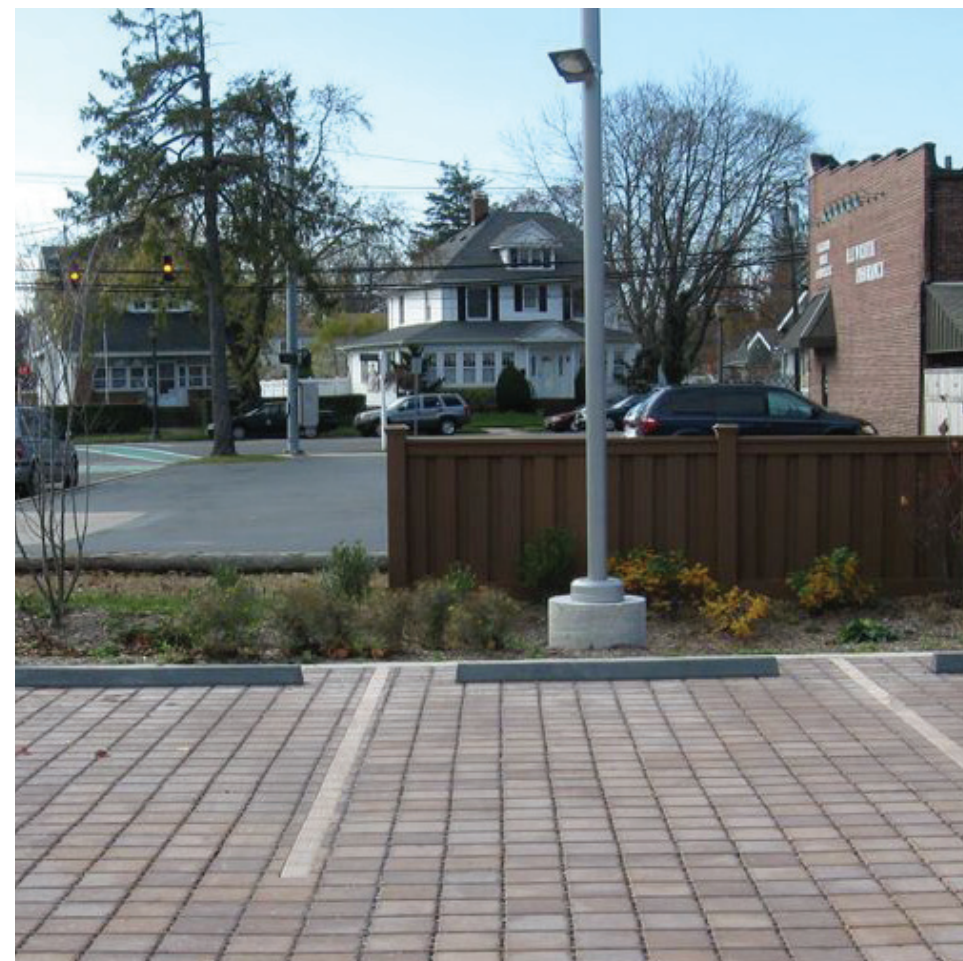
POLLINATOR GARDEN HABITAT



STORMWATER CONTROLS



SHADED PLAYGROUND EQUIPMENT



PERMEABLE PARKING LOTS



COMMUNITY GARDENS



RAINWATER CATCHMENT SYSTEM



CURB-IT PARTICIPATION



XERISCAPE

IDEAS

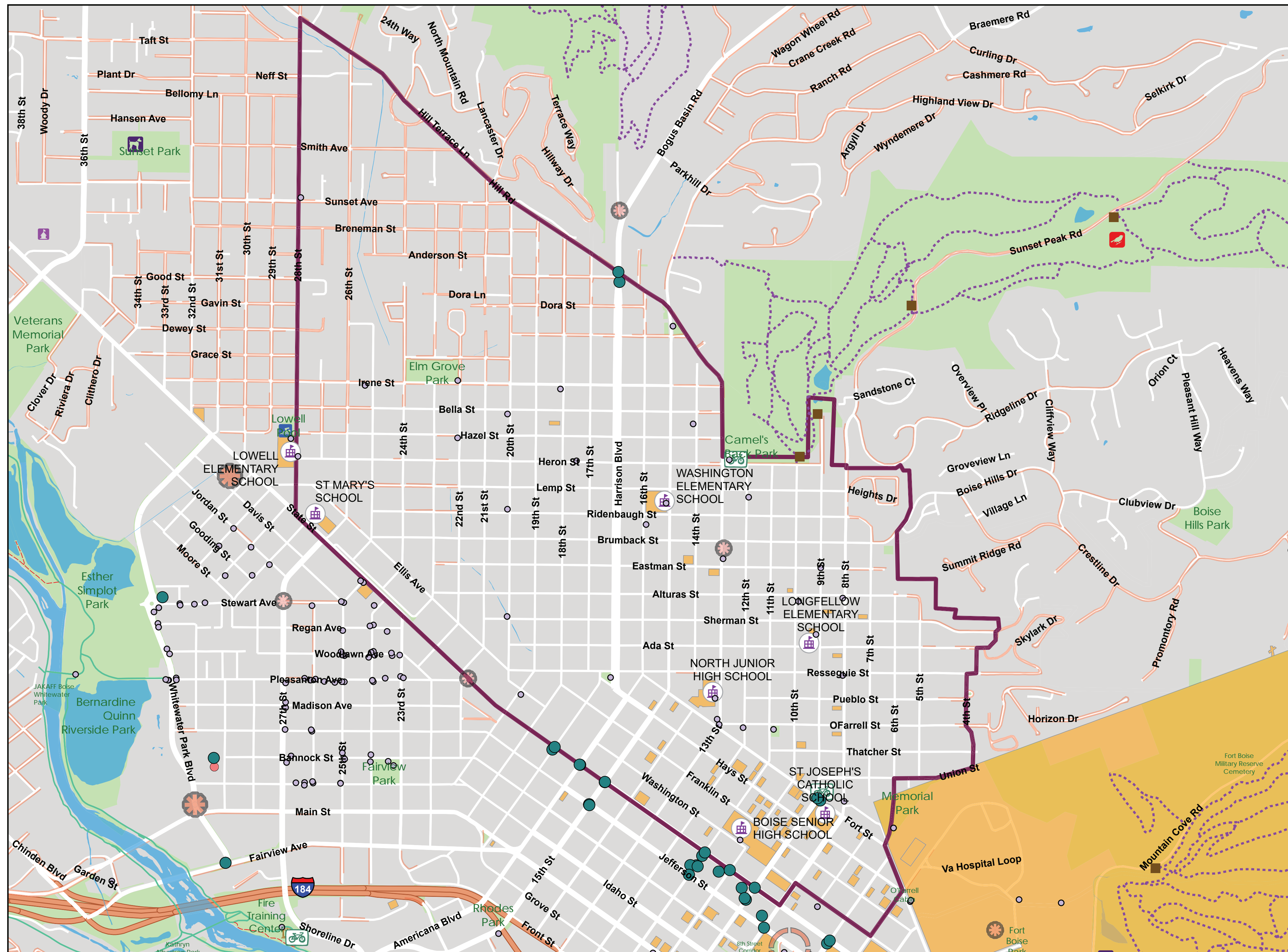
- Microgrids/school solar
- Green walls
- EV chargers
- Wayfinding to the foothills/ destinations
- Native plants/xeriscaping
- Pollinator garden programs
- Natural stormwater controls

- Utilize irrigation (instead of treated water)
- Zero waste events
- Improved Curb-It participation
- Tree canopy health and expansion
- Shade playground equipment (with trees)
- Daylight Hulls Creek from frog pond to trailhead

- Rainwater catchment
- Biodegradable packaging at local shops
- Firewise practices
- Permeable parking lots
- Community garden or “guerilla” gardening
- Dark Skies lighting

Goals: PLACEMAKING & NEIGHBORHOOD ENGAGEMENT

- Protect, celebrate and build on our neighborhood's legacy of creating exceptional, beloved public spaces.
- Create opportunities for meaningful neighbor-to-neighbor connections and maintain the North End's capacity to address neighborhood needs together.



Legend

Boise Historic Landmarks

Urban Trails Interpretive Signage

Boise Public Art

🚲 Bike Repair Stations

Greenbelt

Natural Greenbelt Path

Ridge to Rivers Trails

Nature Center

Swimming Pool

Trailhead

🏫 Schools

ACHD Missing Sidewalks

Boise Comprehensive Plan Activity Centers

🌟 Neighborhood Activity Center

🌟 Community Activity Center

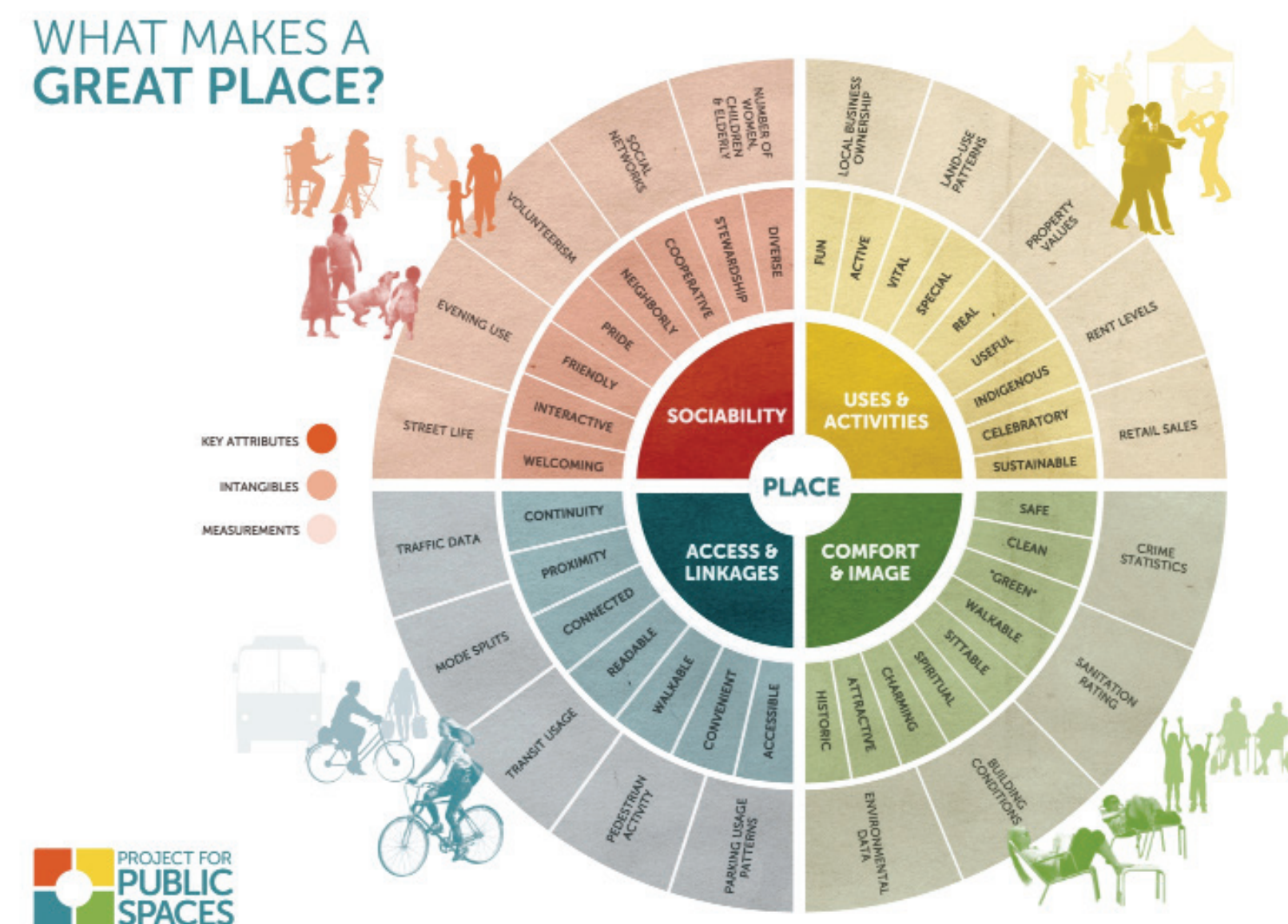
Regional Activity Center

0 0.3 0.5
Miles



WHAT IS PLACEMAKING?

WHAT MAKES A GREAT PLACE?



EXAMPLES OF PUBLIC SPACES IN THE NORTH END

ACTIVITY CENTERS

- Hyde Park
- Fort Street Marketplace
- 17th & State Marketplace
- Harrison & Hill
- 28th & Heron
- 28th and Sunset

GREEN SPACES

- Camelsback Park
- Elm Grove Park
- McCauley Park
- Gorden. S. Bown Park
- Memorial Park
- Ridge to Rivers trailheads
- Open Space Reserves

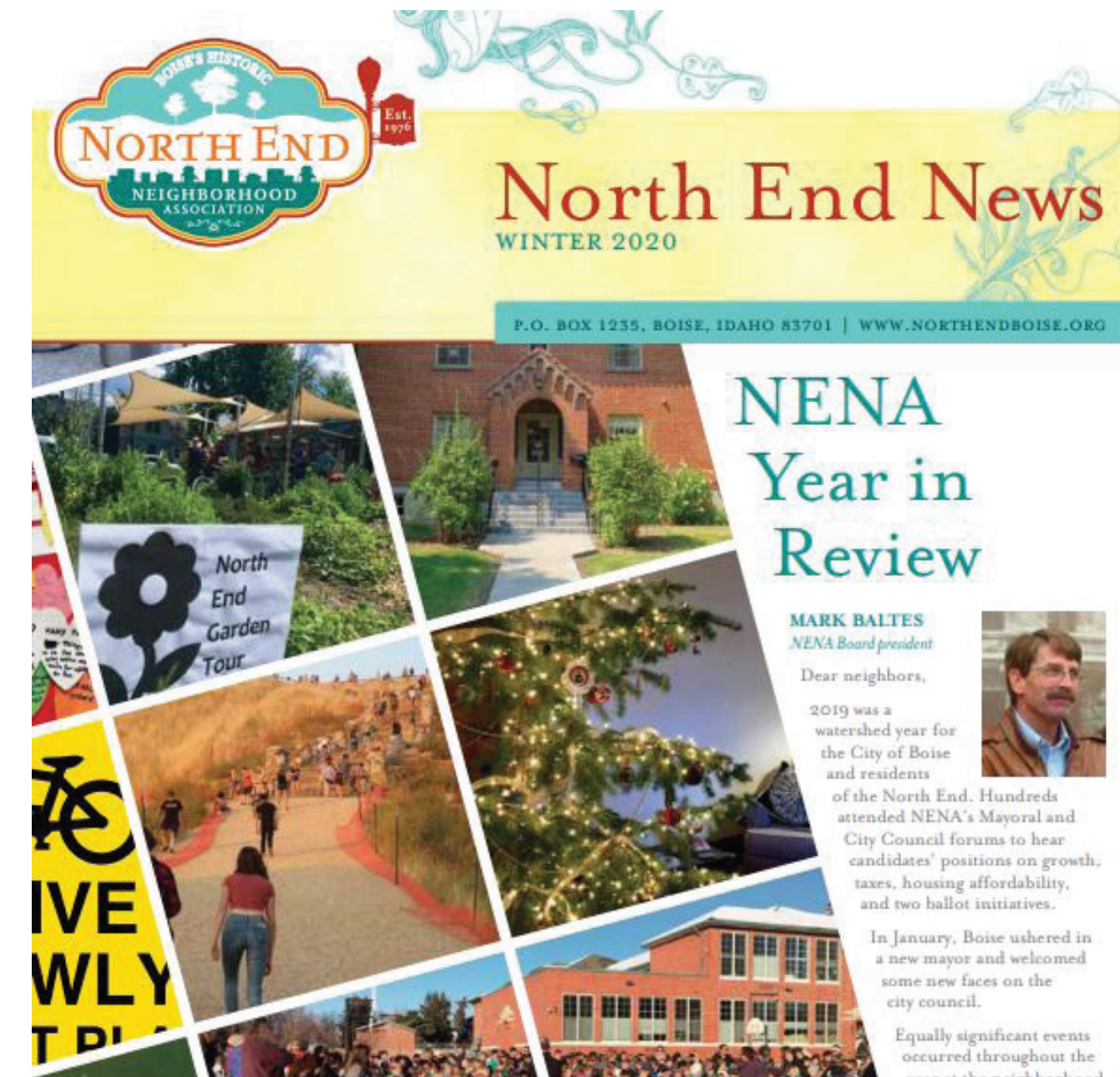
OTHER SPACES & PLACES

- Schools
- Streets/Sidewalks/Alleys
- Art and Interpretive Installations
- Pop-Up and Temporary Activities



WHY IS NEIGHBORHOOD ENGAGEMENT IMPORTANT?

What does it take to build social capital?



POSITIVE ENVIRONMENT

- Clean and safe (clean water and air, walkable, low crime)
- Provides basic needs (housing, education, goods and services)
- Includes gathering places
- Understood boundaries

NEIGHBORHOOD STRUCTURES

- Opportunities for civic engagement
- Functional neighborhood organizations
- Volunteerism options
- Communication channels
- Localized funding

BONDING RELATIONSHIPS

- Programmed events and programs
- Strong informal social networks
- Positive day-to-day neighbor encounters

AFFINITY AND IDENTITY

- Emotional connection to a place
- Unique character and image (neighborhood "brand")
- Common values

PLACEMAKING



ALLEY BEAUTIFICATION



CHICAGO GREEN WALL



CHRISTMAS STREETS/
CANDY CANE LANE



HOLIDAY CARRIAGE RIDES



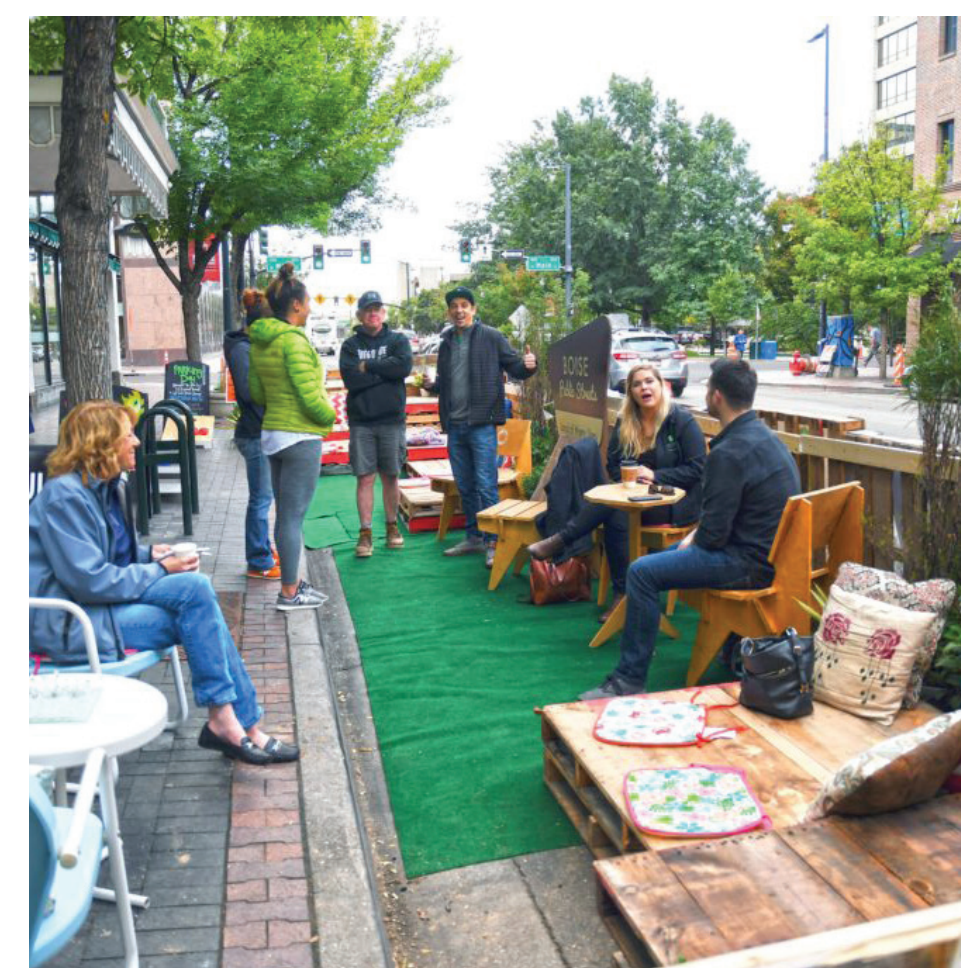
TEMPORARY ART INSTALLATIONS



TEMPORARY LIGHT PLAZA



MOVABLE PLAY EQUIPMENT



PARKLET



OUTDOOR MOVIE NIGHT



YOGA IN THE PARK



NATIONAL NIGHT OUT



VOLUNTEER TRAIL MANAGEMENT

NEIGHBORHOOD ENGAGEMENT

ORGANIZATION

- Speakers series
- Local schools joint PTO meetings
- Neighborhood representation on local boards and commissions
- Neighborhood business directory and/or business association
- Events and meetings calendar and e-mail notification system

EVENTS

- Neighborhood picnic
- Ice cream social
- Outdoor movie nights
- Shop local days
- Open mic/street performance events

PROGRAMS

- Neighborhood task forces
- Community watch program
- Pollinator (birds, bees and butterflies) garden/seed program
- Expand free libraries
- Dog poop bag dispensers and clean-up days